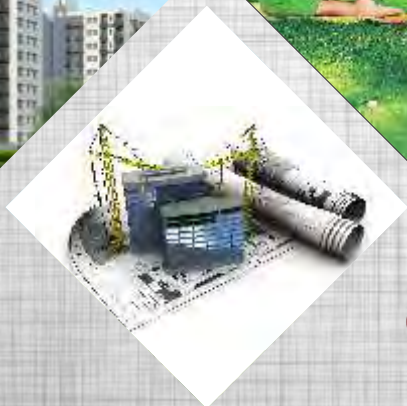


LAXMI APARTMENT

GREAT LOCATION, BEST FACILITIES, AFFORDABLE PRICE





AN INVITATION TO MAKE BAHADURGARH YOUR FUTURE



Bahadurgarh

The Fastest Growing Suburb of Delhi

Ruhil Group invites you to make Bahadurgarh your future. It is one of the fastest developing residential town and industrial hub in the NCR region. Located west of Delhi on NH-10 and Kundli Manesar Palwal Expressway (KMP Connects NH-1, NH-8 & NH-10), 22 kms from Delhi Airport, Bahadurgarh is well connected through rail and road network to Delhi. Delhi Metro is proposed to expand uptill Bahadurgarh in the near future. Bahadurgarh is in close proximity with Gurgaon (30 km), another prosperous suburb of Delhi.

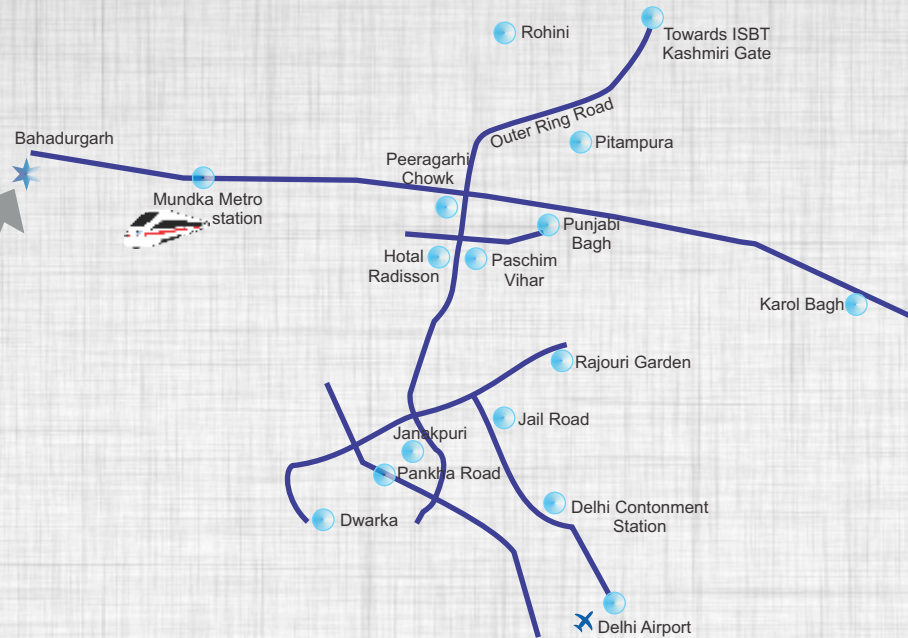
Bahadurgarh is poised for unprecedented growth as residential, commercial and industrial development is taking place in a balanced manner. Home to well known industrial units like Hindustan National Glass, Hindware, Somany Tiles, Parle Biscuits, Prakash Surya and Yokahama, the industrial growth in Bahadurgarh will support local economy. The four residential sectors developed by Haryana Urban Development Authority (HUDA) provides comfortable residential space for the local population.

Bahadurgarh has also developed into a centre for girls' education. In addition, there a number of private educational institutes providing computer and management education.

So, don't miss this opportunity to make Bahadurgarh your future.

Next to Delhi

15 kms from Punjabi Bagh

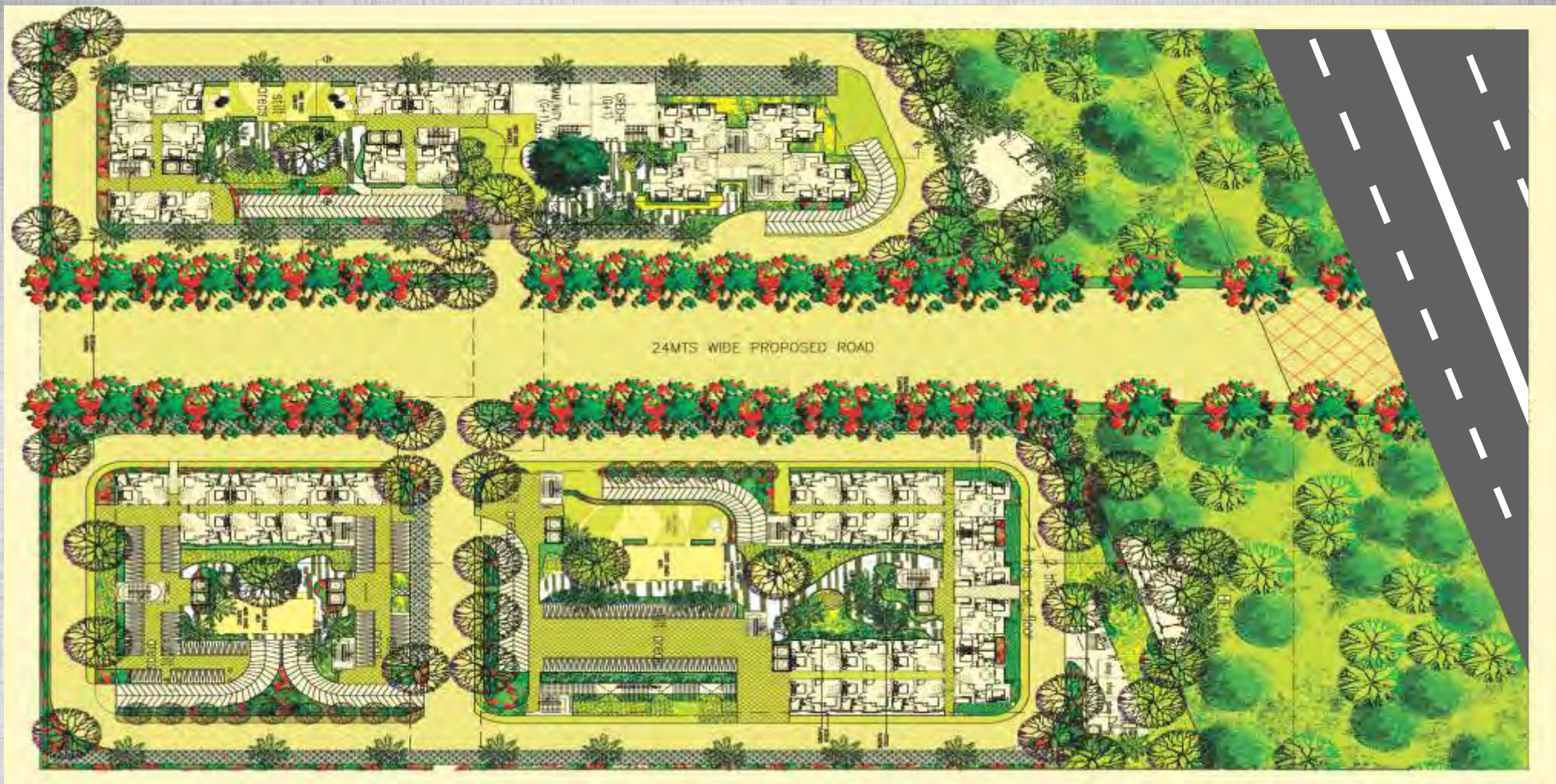


Connectivity to NCR

- ★ 45 Minute drive to IGI / Palam Airport
- ★ 1 Hour Drive From Gurgaon
- ★ 20 Minutes Drive From Piragarhi Chowk

- Location just 3 Km from Delhi border
- Schools like DPS, DAV and other reputed Schools in close proximity
- Excellent connectivity becoming even better with the KMP expressway and Delhi metro
- Power Backup & round the clock water supply
- In House club with the facilities of sports and Resturant.
- 3 KM from Proposed Metro Station
- 5 KM from Bahadurgarh Railway Station.
- 22 KM from Peera Garhi Chowk
- 35 KM from IMT Rohtak
- 35 KM from Cyber City Gurgaon.
- 35 KM from IGI Airport
- 40 KM from ISBT New Delhi
- 60 KM from IMT Manesar.
- Right on Bahadurgarh – Jhajjar Road
- Close Proximity to NH-10 By-Pass
- 0 KM from Nature





Amenities

- Budget Flats
- Free Parking
- Power Backup Facility
- Beautiful Landscaping
- Commercial Space within the compound
- Jogging Track

- Get together space
- Elevators for easy accessibility
- Gated Complex
- 2000 sqft of Anganwadi
- 2000 sqft of creche
- Close to Nature



LAXMI APARTMENT

We, The Ruhil Group are committed towards bringing all your dreams to life. We are your promise to an aspiring today and a Brighter tomorrow. We invite you to make your home in Bahadurgarh at the most Budgeted Residential project, Laxmi Apartments. Located in sector - 37 Bahadurgarh, Laxmi Apartments is spread over 5.27 acres of land in prime location.

1 BHK UNIT



CARPET AREA - 366 SQFT
BUILT-UP AREA - 417 SQFT

3 BHK UNIT



CARPET AREA - 648 SQFT
BUILT-UP AREA - 748 SQFT

2 BHK UNIT



CARPET AREA - 554.5 SQFT
BUILT-UP AREA - 628.5 SQFT

- Bedrooms /Halls /Kitchen /Toilets /Balconies: Vitrified & antiskid Ceramic Tiles,
- Wall Finish: Plaster with OBD,
- Wall tiles: Ceramic Tiles,
- Kitchen: Slab platform, Single bowl SS sink,
- Doors: Painted Hard Wood Frame Door,
- Windows: MS Z-section Frame, Chinaware & CP Fittings:
- Switches/sockets: Railing: M.S.

Tower - A



Tower - B



Tower - C



Tower - D



Ruhil Group, was founded 15 years back in National Capital Region and since then has been scaling new heights by each passing day. The company has set new trends of architectural finesse in the contemporary global scenario touching the horizons of excellence. Established under the dynamic leadership of dynamic and enthusiastic professionals, Ruhil Group has led to creation of various landmark projects. The leaders and skilled professionals of the company have worked towards launching out of the league projects and take the real estate sector to the next level.

Ruhil Group's business philosophy derives its core strength from a firm belief that it lays stress on induction of state-of-the-art engineering techniques and use of top quality materials in construction projects. This results in the cost effective and holistic solutions specific to contemporary standards for residential complexes and business centres. Ruhil Group with its unparalleled business approach & vision is consistently working to create value for its customer and business partners. Using human resource and by harnessing the technological prowess, today Ruhil Group, is all set to expand its real estate operations and create edifices that will be the benchmark of architectural finesse.

The Ruhil Group is uniquely committed to serving its clients. It places financial safety, comfort and success of its investors second to none. The group was founded on trust and long-term relationship. As a result, most of Ruhil Group's investors have been with it for a decade, and most of them have invested in multiple projects.

Ruhil Group has to its credit over million square feet of real estate under development both in residential, commercial and Industrial sector and these have been acknowledged as value products in terms of quality, aesthetics, overall planning, finishing and timely possession. Group is endowed with impeccable foresight, enviable expertise and innate acumen providing cost effective and holistic solutions to the real estate and construction world.

MD'S Message

"Partnerships are all about seeing the other person's viewpoint."

At Ruhil Group, we take pride in our vision and insight of your world. It helps us appreciate your needs better. It is no secret that when you choose Ruhil Group, you choose the best and take a giant leap into a bigger and better future.

I sincerely thank you all for always standing beside us through the journey of Ruhil Group. Starting with a modest beginning, today Ruhil Group stands tall after delivering new age homes to hundreds of families. We cater to multiple geographies with real estate projects in all price points. Our focus has been on the common man of the country not only in Tier I cities but also in destinations that are new to organized real estate. In reciprocation, the market today recognizes us as a responsible leader. We believe that value creation is an everlasting phenomenon and trust is not built overnight.



Ruhil Promoters Pvt. Ltd.

(A company of Ruhil Group)

Regd. Office : A-348, Meera Bagh, Main Outer Ring Road
New Delhi - 110087

Administrative Office : 2nd floor , Ruhil Tower, MIE Part - B
Delhi Rohtak Road, Bahadurgarh, Jhajjar, Haryana - 124507
Ph.: 01276-268629

Email: info@ruhilgroup.com

www.ruhilgroup.com