



HVAC & CLEAN ROOM INTRODUCTION LETTER

Introduction Letter For HVAC & CLEANROOM

From:



TANUSHREE **AIR** TECHNIQUES

204, Welcome Shopping Center,
Opp. Punit nagar, Old padra road,
Vadodara-390 015 (Gujarat) India
Telefax: 91-265-2350371

Email: info@airtechniques.in

www.airtechniques.in

www.indiamart.com/airtechniques

LETTER OF INTRODUCTION

Dear Sir,

TANUSHREE AIR TECHNIQUES is proud to introduce as **HVAC** complete solution for better and clean environment in working and production area. Our ambition is for the company to become a leading force in Heating, Ventilation, Air conditioning and Clean room Equipment of high quality and that to meet standards of Clean room technology.

We undertake the **turnkey projects** including HVAC, partition, ceiling, flushed doors, view panels, flushed type Light fixtures, LAF, etc. as per schedule M, GMP and WHO requirement.

AHU and Ventilation system for Clean room:

Effective, energy-efficient heating, ventilating air conditioning equipment properly applied is an essential part of today's demand for minimum system operating costs. Applying innovative techniques and ideas in an ever-changing industry, one of our major strengths is our capability and confidence to provide value-added services – product installation and warranties, site testing and commissioning, to handle any project, regardless of size or complexity, from inception, through budgeting, to the design, manufacturing and start up. Our Clean room products are designed according to client's specific requirements with a commitment to offer clients the utmost in service and quality, with an end product that is both cost-effective, efficient and energy saving.

We would like to meet you for detail discussion and your requirements so we can suggest you the best system suitable for your plant.

We welcome the opportunity to work with you and we want to have long-term relationships with customers in which trust and understanding are mutual. Thanking you and assuring you our best services at all times.

Contact Us on MOBILE - 09879003546; 09714882900; 09909021869

Email: info@airtechniques.in

Websites: www.airtechniques.in ; www.indiamart.com/airtechniques

Telefax#: 91-265-2350371

Yours Sincerely,

For, **TANUSHREE AIR TECHNIQUES**

Rohit Kela

Your secure and reliable partner for good indoors environment

*Welcome to the ecstatic & euphoric world of TANUSHREE **AIR** TECHNIQUES*

Where converting cherished dreams into equally pleasurable & very tangible reality by providing turnkey solutions to our valuable clientele is our maxim as well as our everyday business.

Where comfort of our esteemed clients is uppermost in our minds which is why we provide all products & services you need under one roof only saving your valuable time, effort & money & also saving you from unnecessary hassles & trouble of going to different agencies for all your needs.

Where our inexorable obsession & unyielding passion for flawless quality of all our products & services **at unbelievable prices** results in huge benefits for all our past, present as well as future clients.

Where concepts such as total client satisfaction & superlative value for money are etched & imbued in our work schedule as well as our collective psyche.

Where implementation of the best & the finest global as well as national standards such as **WHO; GMP; USFDA; MHRA; MCA** etc. at all the critical as well as non critical stages of manufacturing & functioning from start to finish ensures & assures total peace of mind in context of perfect quality of all products & services.

Where fierce ambition runs very very high for all our global as well as local future projects as far as providing the best of services to an increasingly global in pursuit of excellence.

IMPORTANCE OF CLEAN ROOM IN INJECTABLE UNITS

The Sterile Suites:

With Clean room you can achieve better class easily.

The surface of Walls, floors and ceiling should be smooth, impervious and unbroken In order to minimize the shedding or accumulation of particulate matter, and to permit The repeated application of cleaning agent and disinfectants where used. Wood absolutely not allowed.

To reduce accumulation of dust and to facilitate cleaning, there should be no unclean able recesses and minimum of projecting ledges, shelves, cupboard, equipments, fixtures and fittings. Coving should be used where walls, meet floors and ceilings in aseptic areas. (And preferable in other clean areas as well.)

All the pipes and return air ducts risers, electrical switch sockets and other utilities should be installed in such a way that they do not create recesses which are difficult to clean. They should be sealed in to partition walls through which they pass. False ceiling must adequately sealed to prevent contamination from the space above them.

All the light fittings filter housings and pendants located in such a way that there are no Exposed screws, no sharp corners due to flange.

Drain should be avoided whenever possible. If installed they should be fitted with an effective, easily cleanable trape and air brake to prevent back flow. It should be of stainless steel without over flow.

For detail we will discuss with you personally.

We strive to offer products characterized by high performance, functional safety, and minimum space requirements & timeless, attractive design. We offer everything you need - ideas, components, products, systems, knowledge and experience – to achieve indoor climate, which will be totally unobtrusive to the people occupying area.

Our extensive product range means we are able to provide Design, Supply, Installation and Commissioning of Clean room and Controlled Environment Products for

- *Pharmaceutical Production*
- *Laboratories*
- *Micro-Electronic Production*
- *Engineering facilities*
- *Food & Beverage production*
- *Medical Device manufacture*
- *Commercial & Offices*
- *Hospitals and Operation Theaters*

Design, Supply, Installation and Commissioning of

- Air Handling Units for Air-condition and Ventilation system
- Accessories like Ducting, Piping, Thermal & Acoustic Insulation and Controls

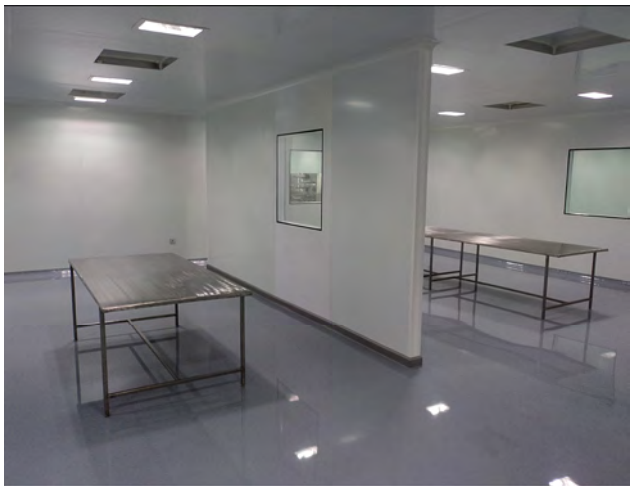
We also provide Control documents for reference & future use, Performance Certification and Validation.

TANUSHREE **AIR** TECHNIQUES *PRODUCT RANGE*

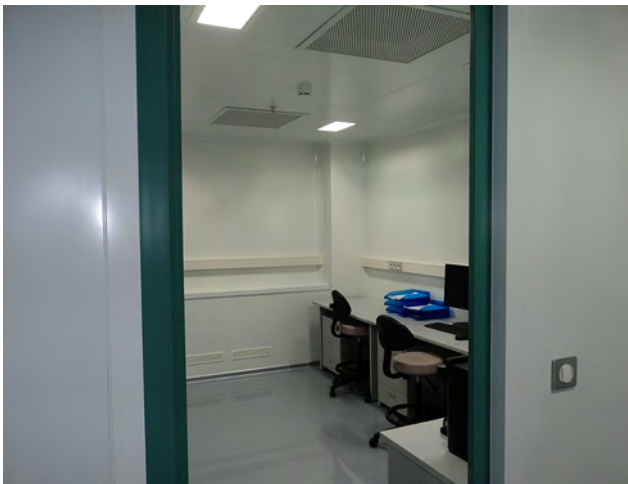
- LAMINAR AIR FLOW – Horizontal, Vertical, Mobile LAF (Clean Cart) & Ceiling Suspended
- REVERSE LAMINAR AIR FLOW (DESPENSING BOOTH)
- AIR SHOWER
- PASS BOX – Static (Without filter), Dynamic (With filter)
- CLEAN ROOM PARTITION AND AIR TIGHT FALSE CEILING WITH COVING
- CLEAN ROOM GARMENT STORAGE CABINET
- AIR TIGHT DOORS, VIEW PANEL & SS GUARD FOR VIEW PANEL
- AIR TIGHT DOORS ALSO AVAILABLE IN FRP
- G I DUCTING
- SHOE RACK
- PENDENT
- AIR HANDLING UNIT
- PRESSURING MODULE
- FLUSHED TYPE LIGHT FIXTURES
- HEPA FILTER, MICROVEE FILTER & PRE FILTER
- SS TABLE, CHAIR AND TRAY FOR LABORATORY
- VALIDATION (DOP TESTING, PARTICLE COUNT, VELOCITY MEASUREMENT, AIR CHANGES CALCULATION)

Our Valuable Clients

Sr.No.	Project	Place	Facility	HVAC Class	Equipment Supplied	Project Value
1	Cin Pharma	Douala, Cameroun	Tablet, Capsule & Liquid Plant	Class 1 Lac, Class 10000	HVAC, RLAfS, HLAfS, Garment Cubicles, Pass Boxes	US\$ 2,90,000
2	Polymer Technologies International	Dabhasa (Vadodara)	Small Volume Parenterals, Contact Lenses & ENT products	Class 10000	Clean Room Panels, HVAC, HLAfS, VLAfS, Garment Cubicles, Pass Boxes	INR 30,00,000
3	Biodeal Laboratories Pvt. Ltd.	Surendranagar	QC Area	Class 10000	Clean Room Panels, HLAfS, RLAfS & Pressurising Modules	INR 12,00,000
4	Emprocell Clinical Research Pvt. Ltd.	Mumbai	Cell Cultivation Lab	Class 1 Lac, Class 10000, Class 1000	Clean Room Panels, HVAC, VLAfS, Dynamic Pass Boxes, SS Furniture, Draft Hoods, Garment Cubicles	INR 60,00,000
5	Wockhardt Ltd.	Daman	Tablet Packaging Area	Class 1 Lac	Clean Room Panels, HVAC	INR 17,50,000
6	Lubrizol Advanced Materials india Pvt. Ltd.	Manjusar (Vadodara)	Powder bag filling	Class 1 Lac	Clean Room Panels, HVAC	INR 40,00,000
7	Rajat Pharma Chem Pvt. Ltd.	Ankleshwar	Folic Acid Tablet Plant	5 Micron	Clean Room Panels, HVAC, RLAfS & SS Furniture	INR 60,00,000
8	J Duncan HealthCare Pvt. Ltd.	Atgaon Ind Estate, Thane	Tablet, Capsule & Liquid Plant	Class 1 Lac	Doors, Windows, HVAC , RLAfS & HLAfS	INR 45,00,000
9	ASTA India Pvt. Ltd.	Savli (Vadodara)	Copper Drawing & Annealing Plant	5 Micron	Glass Partition & Pressurising Modules	INR 50,00,000
10	UICT	Matunga, Mumbai	R & D Laboratory	Class 10000	Clean Room & HVAC	INR 10,50,000
11	Intra Ocular Care Pvt. Ltd.	Dabhasa (Vadodara)	Contact Lenses	Class 10000	Clean Room & HVAC	INR 19,00,000
12	Spectra Vision Care	Bhavnagar	Contact Lenses	Class 10000	Doors & Windows, HVAC	INR 18,00,000
13	Crescent Labs Pvt. Ltd.	Manjusar (Vadodara)	Lequide & Dry powder injuction, Ointment	Class 10000 ; 5 Micron	HVAC; Clean room	INR 1,00,00,000
14	Rare Herbs Pvt.Ltd.	Dabhasa (Vadodara)	Contact Lenses	Class 10000	Clean Room & HVAC	INR 16,00,000
15	Pharmeko Limited	Moscow	Tablet;Capsule;Prefille d Syringe & Syrup Plant	Class 1 Lac	Clean Room; HVAC; Laminar Air Flows	US\$ 5,95,744
16	RPG Life Sciences	Ankleshwar	Tablet	Class 1 Lac	Cleanroom & HVAC	INR 2,00,000
17	Jenburkt Pharmaceuticals Pvt. Ltd.	Bhavnagar	Pharmaceuticals	Class 10000	Cleanroom Equipement	INR 3,50,000
18	Apicore Pharmaceuticals Pvt.Ltd.	Vadodara	Pharmaceuticals	Class 10000	Cleanroom	INR 4,00,00
19	Orchev Pharmaceuticals Pvt.Ltd.	Rajkot	Pharmaceuticals	Class 1 Lac	Cleanroom	INR 2,00,000

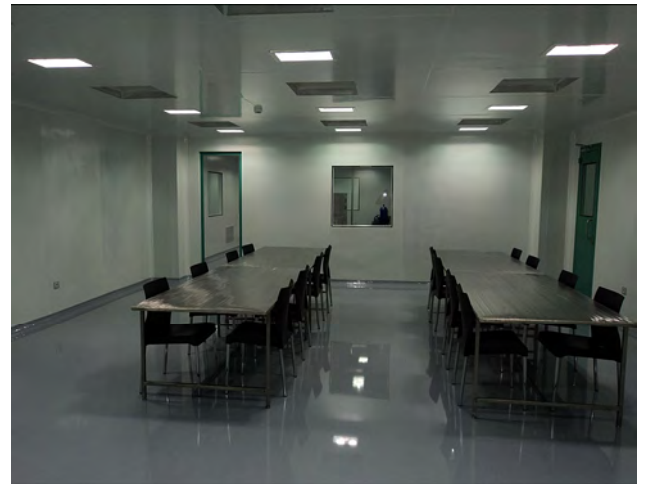




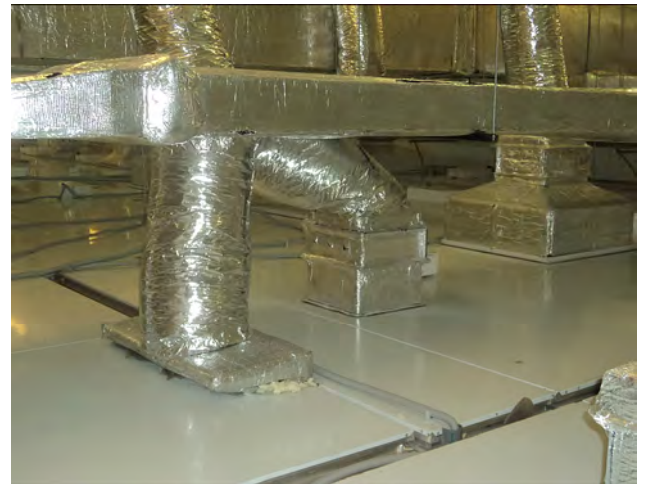
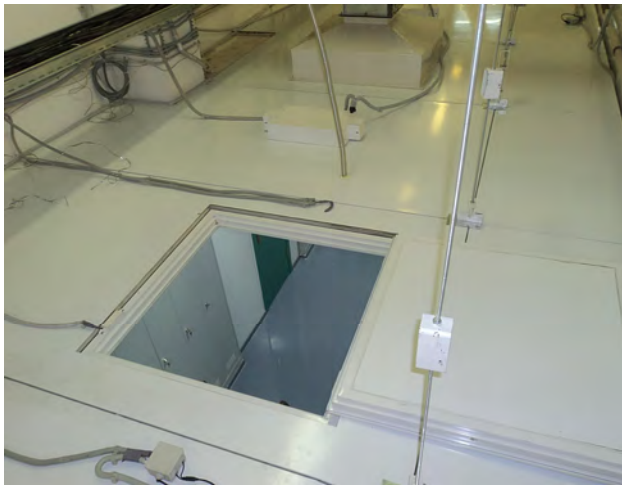


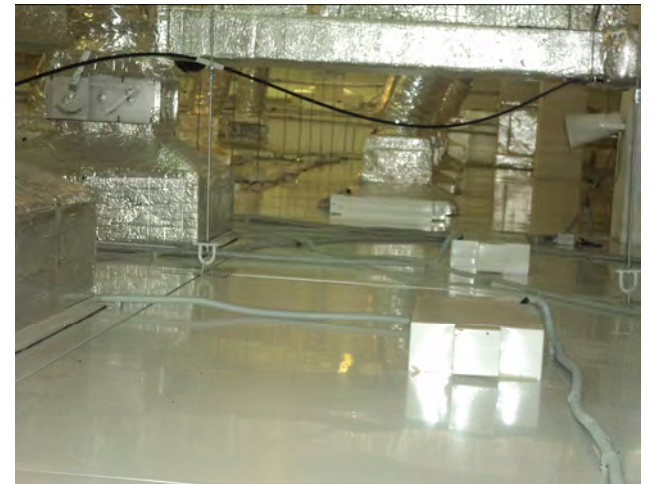
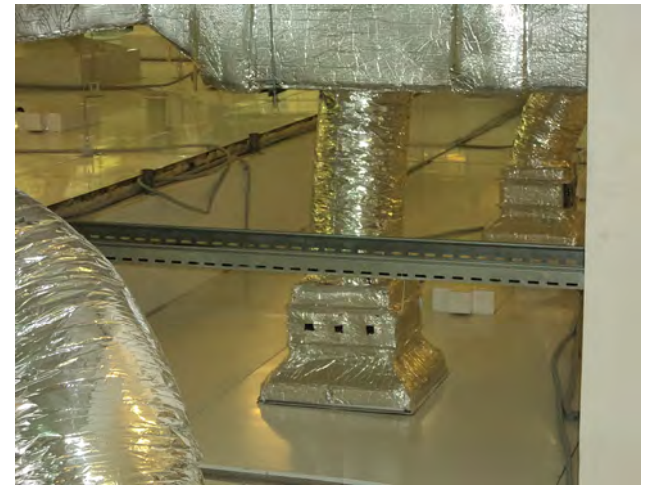


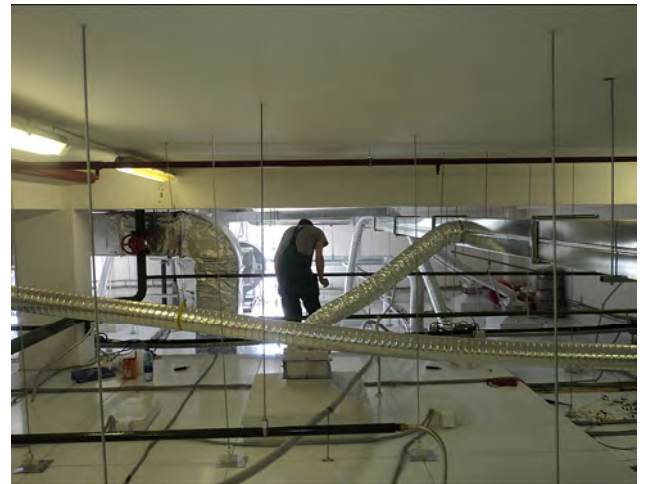
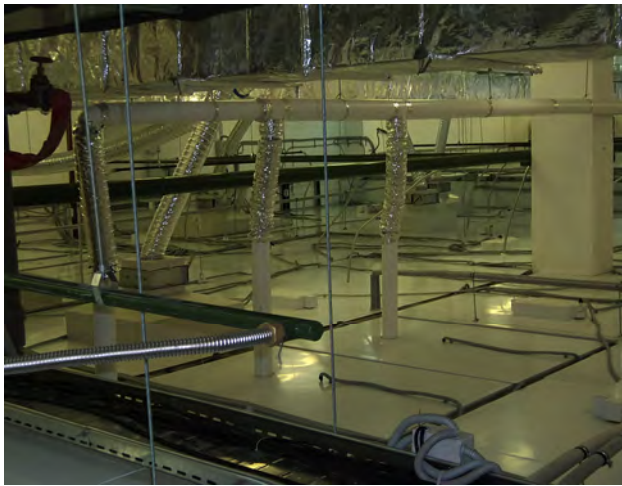


















Image(091)



Image(092)



Image(093)



Image(094)



Image(095)



Image(096)



LAMINAR AIR FLOW3



LAMINAR AIR FLOW7



LAMINAR AIR FLOW9



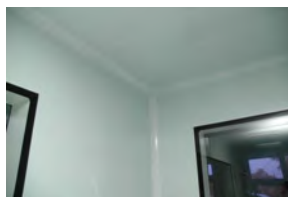
LAMINAR AIR FLOW10



LAMINAR AIR FLOW8



RETURN GRIL



SNAP FIT ALUMINIUM
COVING



SS CHAIR



SS CHAIR 1



SS LAMINAR AIR FLOW



SS LAMINAR AIR FLOW
BENCH



SS LAMINAR AIR FLOW
BENCH1



SS LAMINAR AIR FLOW
BENCH2



SS LOCKERS



SS PARTITION



SS PARTITION WITH
COVING



SS PARTITION WITH
DYNAMIC PASS BOX



SS STATIC PASS BOX



SS TABLE



SS TWO WAY PASS BOX



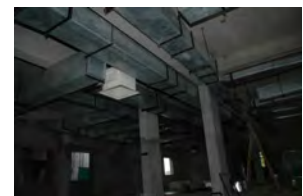
STATIC PASS BOX



STERILE AREA WALKABLE
CEILING



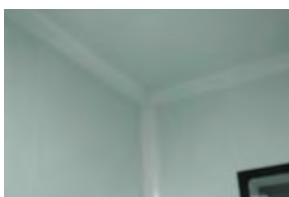
STERILE DUCTING



STERILE DUCTING2



STRILE DUCTING ON
WALKABLE CEILING



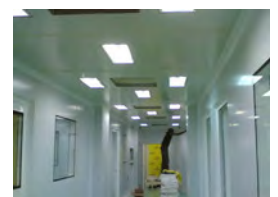
THREE WAY CORNER
COVING



THREE WAY CORNER
COVING PIECE



18042006(001)



18042006(002)



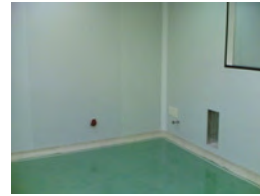
18042006(003)



18042006(004)



18042006(005)



18042006(006)



18042006(007)



18042006(008)



18042006(009)



18042006(010)



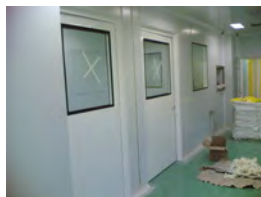
18042006(011)



18042006(012)



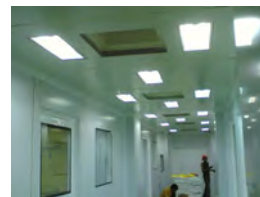
18042006(013)



18042006(014)



18042006(015)



18042006(017)



AHU FAN SECTION



AHU IMPORTED FAN
SECTION



AIR CURTAIN



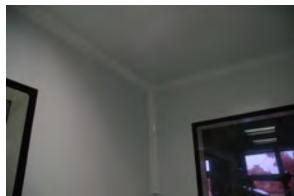
AIR HANDELING UNIT



AIR HANDELING UNIT1



AIR HANDELING UNIT 2



ALUMINIUM EXTRUDED
POWDER COATED COVI...



ALUMINIUM PERFORATED
GRILLE



BUFFER ZONE



BUFFER ZONE CLEAN
ROOM AREA



CELLING



CLEAN GARMENT
CUBICAL



CLEAN GARMENT
CUPBOARD5



CLEAN GARMENT
CUPBOARD 2



CLEAN ROOM 2



CLEAN ROOM 3



CLEAN ROOM 4



CLEAN ROOM 6



CLEAN ROOM 7



CLEAN ROOM 8



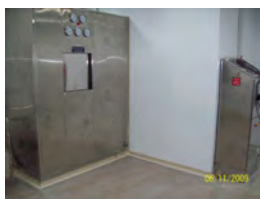
CLEAN ROOM 10



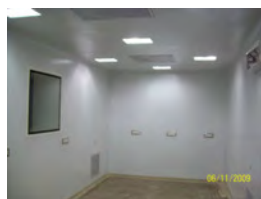
100_0089



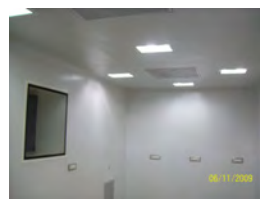
100_0088



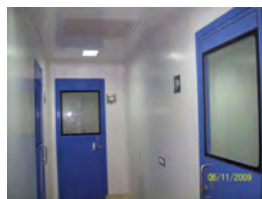
100_0087



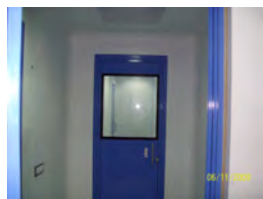
100_0086



100_0085



100_0084



100_0082



100_0081



100_0102



100_0126



100_0125



100_0124



100_0123



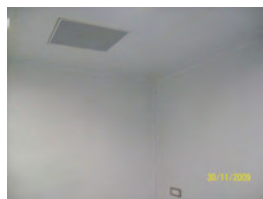
100_0122



100_0121



100_0120



100_0119



100_0118



100_0117



100_0116



100_0115



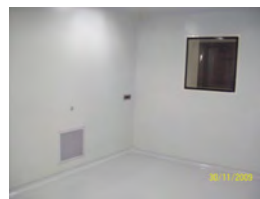
100_0114



100_0113



100_0112



100_0111



100_0110



100_0109



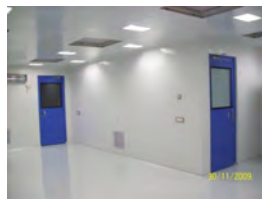
100_0108



100_0107



100_0106



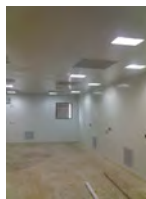
100_0105



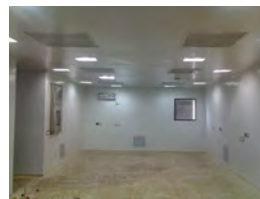
100_0104



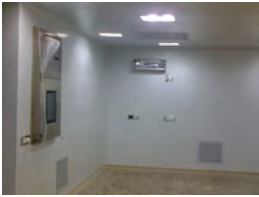
100_0103



1009_143227



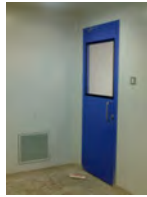
1009_143243



1009_143306



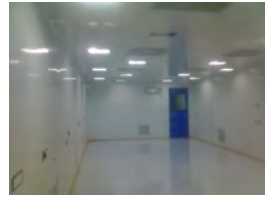
1009_143323



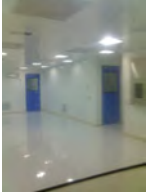
1009_143401



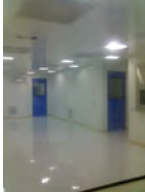
1009_143514



1015_182800



1015_182810



1015_182819



1015_182834



100_0078



100_0079



100_0080



100_0072



100_0073



100_0074



100_0075



100_0076



100_0077



100_0099



100_0098



100_0097



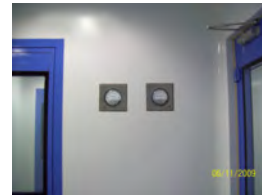
100_0096



100_0095



100_0094



100_0093



100_0092



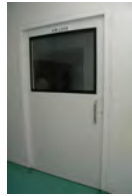
100_0090



CLEAN ROOM CEILING
WITH LIGHT FIXTURE



CLEAN ROOM DOOR2



CLEAN ROOM DOOR6



CLEAN ROOM DOOR8



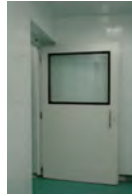
CLEAN ROOM DOOR11



CLEAN ROOM DOOR12



CLEAN ROOM DOOR14



CLEAN ROOM DOOR 8



CLEAN ROOM DOOR 9



CLEAN ROOM DOOR WITH
VIEW PANEL



CLEAN ROOM DOUBLE
DOOR



CLEAN ROOM DOUBLE
DOOR2



CLEAN ROOM DUCTING



CLEAN ROOM GARMENT 6



CLEAN ROOM PARTITION
WITH FLUSH VIEW PANE...



CLEAN ROOM PARTITION
WITH FLUSH VIEW PANEL



CLEAN ROOM THREE
PHASE SOCKET



CLEAN ROOM WITH PASS
BOX LOCATION



CLEAN ROOM 7



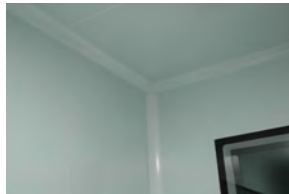
CLEAN ROOM CEILING



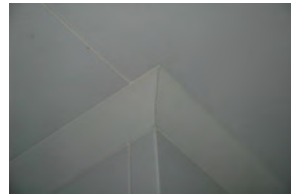
CLEAN ROOM DOOR3



COVING



COVING



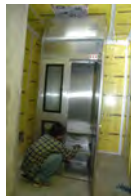
COVING CORNER



COVING THREE WAY



CUPBOARD



CUPBOARD 1



CUPBOARD 2



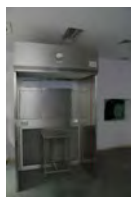
DISPENSING BOOTH



DISPENSING BOOTH4



DISPENSING BOOTH8



DISPENSING BOOTH 3



DISPENSING BOOTH 5



DISPENSING BOOTH 9



DISPENSING BOOTH 10





DESPENSING BOOTH 11



DESPNSING BOOTH2



DOOR



DOOR VIEW PANEL2



DOORS



DUCINTG 6



DUCTING



DUCTING8



DUCTING 14



DUCTING WORK9



DYNAMIC PASS BOX WITH
MAGNETIC INTERLOCKI...



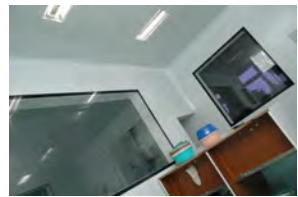
FAN COIL UNIT



FAN SECTION



FILTER HOUSING5



FLSUH TPPE CLEAN
ROOM LIGHT FIXTURE



FLUSE GRILL N DOP
PROBE



FLUSE GRILL WITH
DAMPER N DOP PROBE



FLUSH PARTITION WITH
FLUSH VIEW PANEL AN...



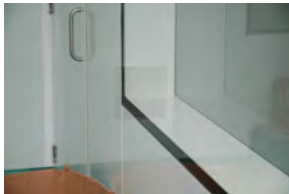
FLUSH TYPE GRILLE WITH
FLUSH TYPE LIGHT FIXT...



FLUSH TYPE SUPPLY AIR
PERFORATED GRILLE



FLUSH VIEW PANEL



FLUSH VIEW PANEL3



FLUSH VIEW PANEL4



FLUSH VIEW PANEL 4



FLUSH VIEW PANEL
CLOSE UP



FLUSH VIEW PANEL WITH
PASS BOX



GI DUCTING WITH FILTER
HOUSING

