

2015



**METRO
SOUTH**
CHAMBER OF
COMMERCE

Accreditation Application

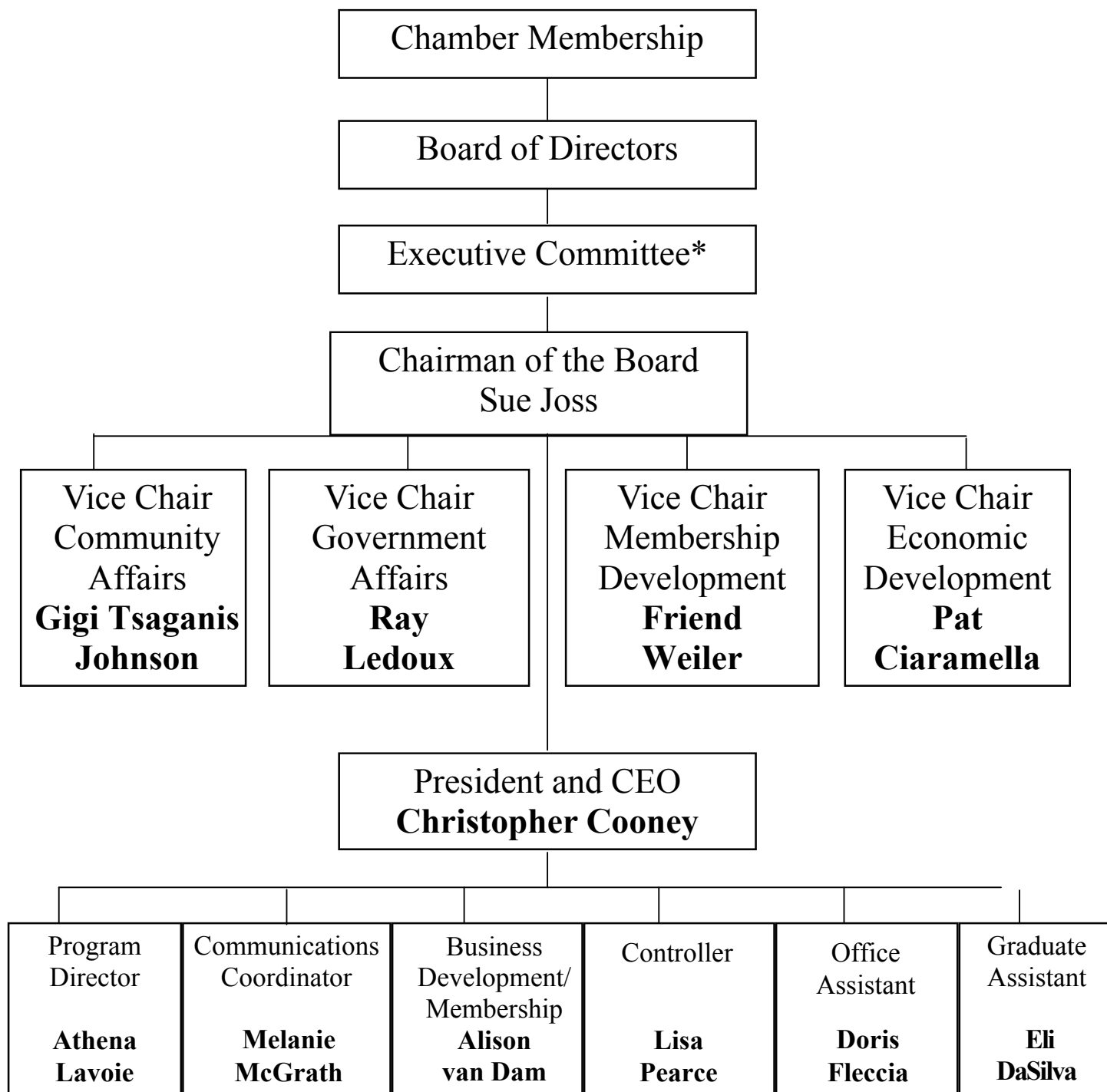
Attachment A 1.3 ORGANIZATIONAL CHART



Metro South Chamber of Commerce
Sixty School Street, Brockton, MA 02301, 508-586-0500, fax 508-587-1340
www.metroouthchamber.com



Organizational Chart



*Comprised of Chairman, President/CEO, Chair-Elect (Gerard Nadeau), Treasurer (John McGovern), Immediate Past Chair (Bill Morse), and Vice Chairs.



Staff Assignments

Christopher Cooney, President & CEO

Chris provides effective leadership for the organization and its members in carrying out the Chamber's mission, directing internal operations and developing external relationships beneficial to business and community advancement.

Doris Flecchia, Office Assistant

Doris helps in all aspects of running the office and assists the office staff in meeting their goals. She also works to identify and develop new and effective means to engage and reward Chamber Ambassadors.

Athena Lavoie, Director of Programs & Events

Athena is responsible for all Chamber programs and events. This includes the monthly Good Morning Metro South breakfasts, Business After Hours, and Government Affairs meetings as well as The Small Business & Entrepreneur of the Year Awards and Expo, the Taste of Metro South, The ATHENA Award & Women's Expo, and the Chambers Annual Meeting and Business Expo.

Melanie McGrath, Communications Coordinator

Melanie designs and produces the Chamber's annual Book for Business, monthly Action Report newsletter, weekly e-Update, and maintains the Chamber's website and social media pages. In addition, she creates event marketing pieces and press releases.

Lisa Pearce, Controller

Lisa is responsible for all of the Chamber's financial reporting. She works cooperatively with the management team to produce forecasts, projections, and budgets.

Elisangela Da Silva, Graduate Intern

Eli is responsible for producing the monthly 10 Fun Activities Around the Corner and helps the staff with many other special projects.

Alison van Dam, Vice President of Business Development/ Membership

Alison provides research and assistance on business development programs and special chamber/ community projects, as well as member recruitment and development. Roles include meeting with current and prospective members as well as the promotion of existing benefits and programs.