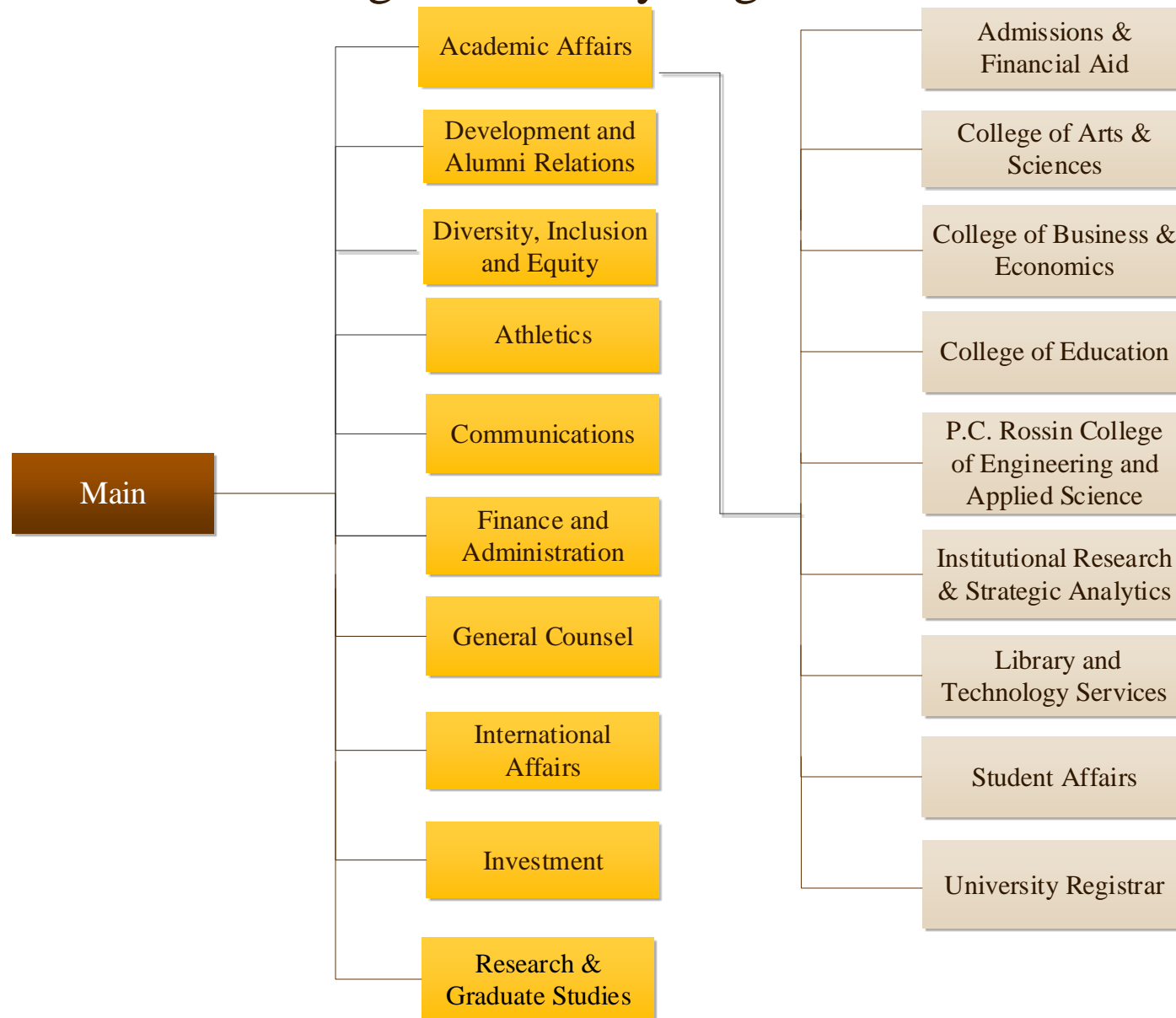


# Lehigh University Organization Chart

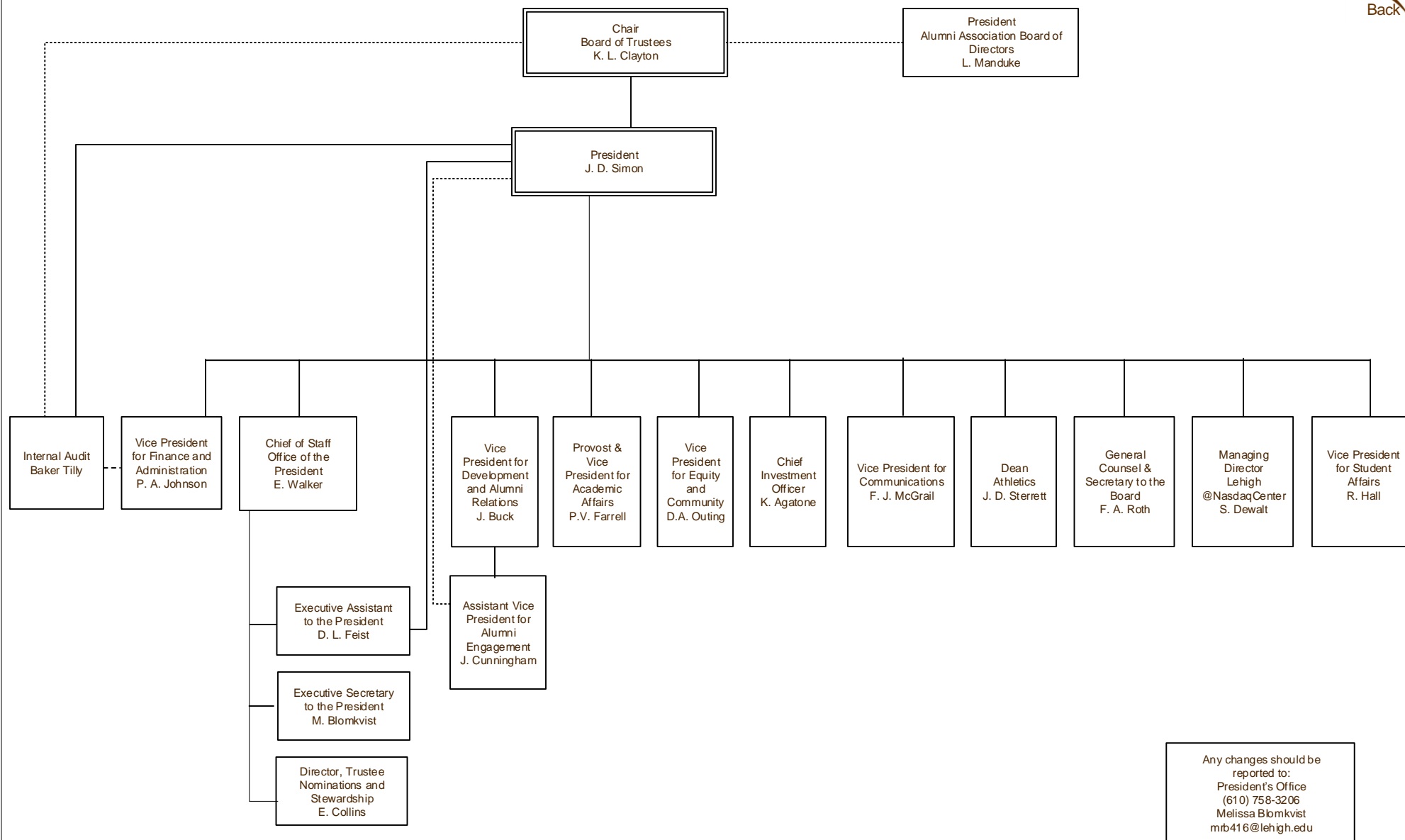


# Organization Chart

## President's Office

Last Update:

October 23, 2019



..... Indicates dual reporting line

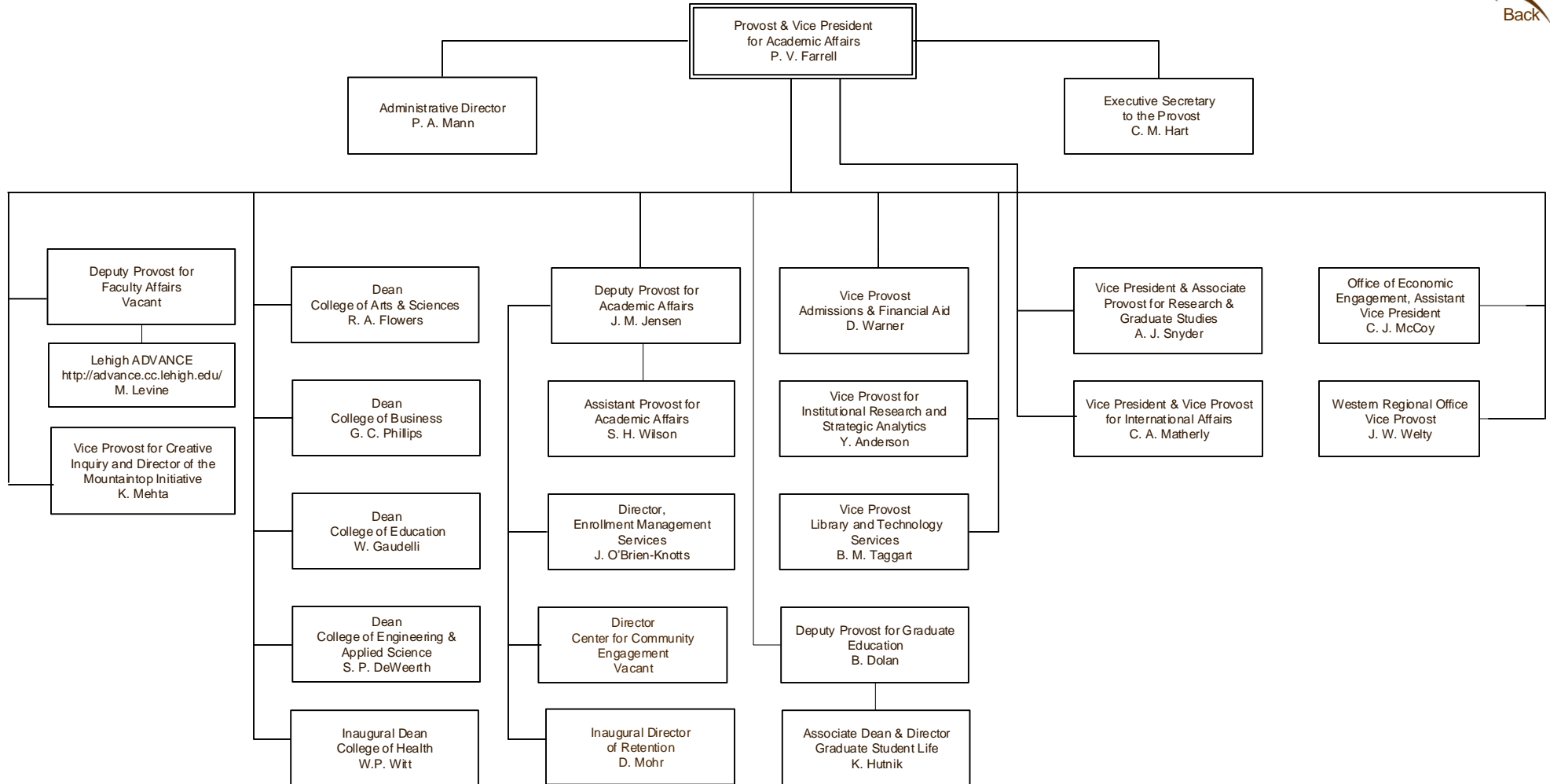
———— Indicates direct report

Any changes should be reported to:  
President's Office  
(610) 758-3206  
Melissa Blomkvist  
mrb416@lehigh.edu

# Organization Chart

## Provost & VP of Academic Affairs

Last Update:  
February 5, 2020



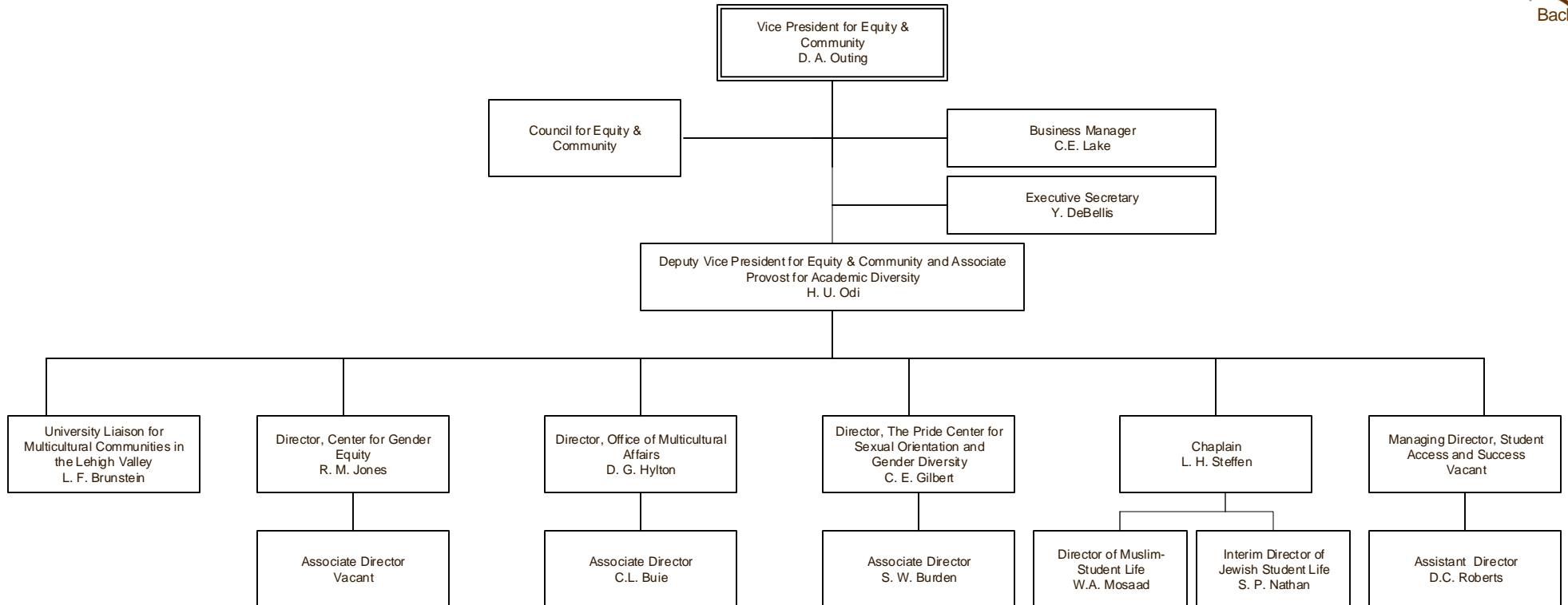
..... Indicates dual reporting line

———— Indicates direct report

# Organization Chart

## Office of Diversity, Inclusion and Equity

Last Update:  
September 23, 2019



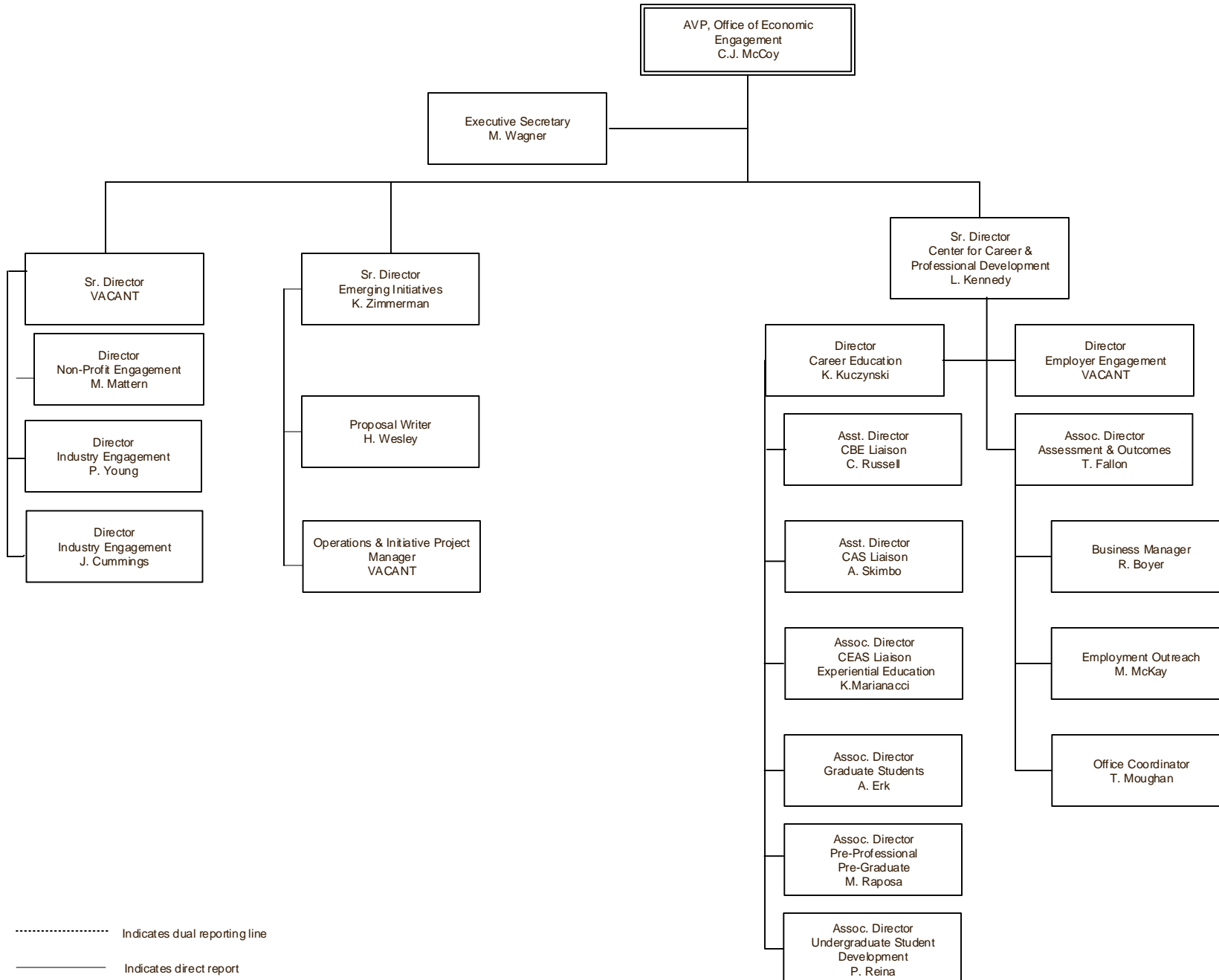
..... Indicates dual reporting line

———— Indicates direct report

# Organization Chart

## Office of Economic Engagement

Last Update:  
January 6, 2020

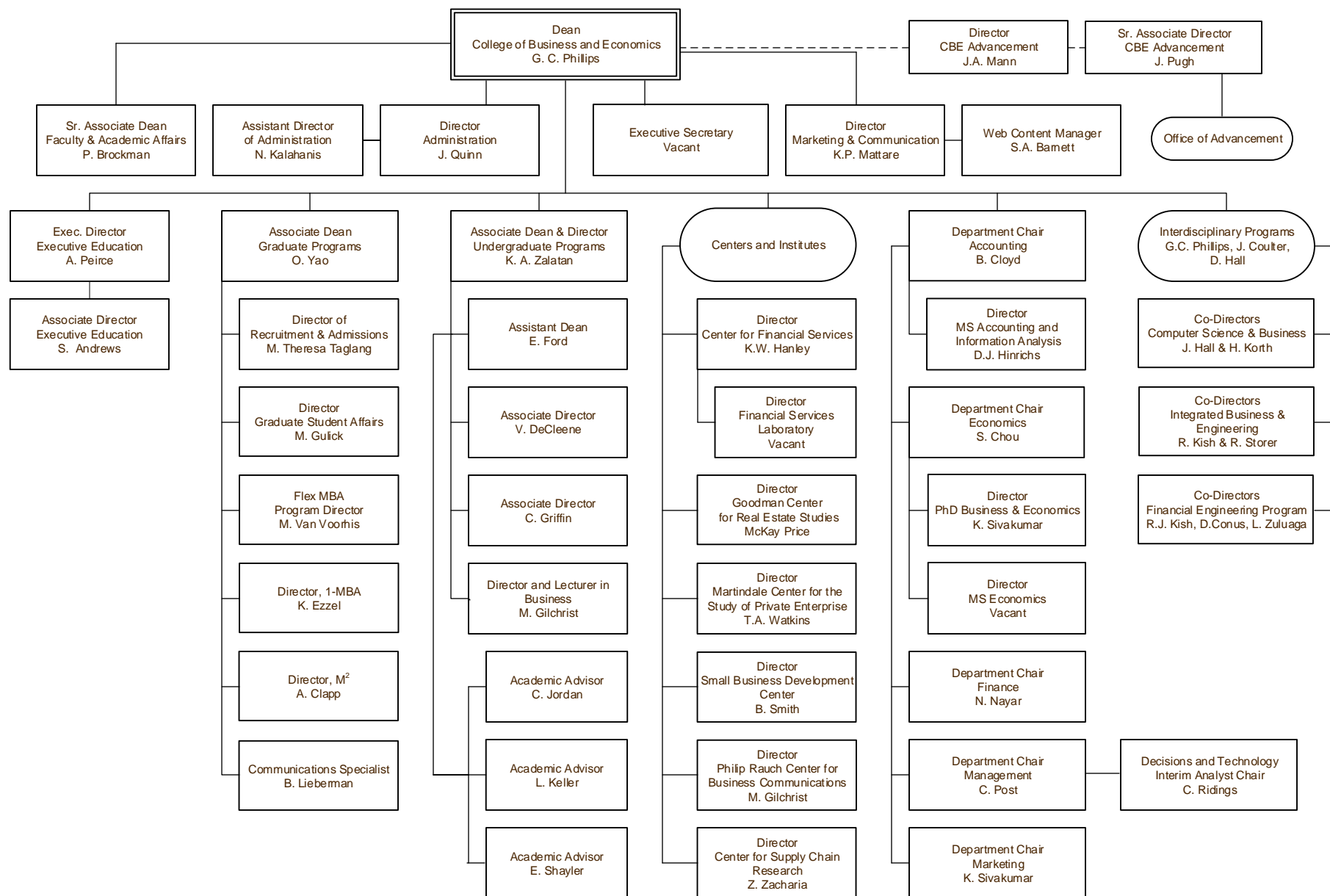


# Organization Chart

## College of Business

Last Update:

August 29, 2019

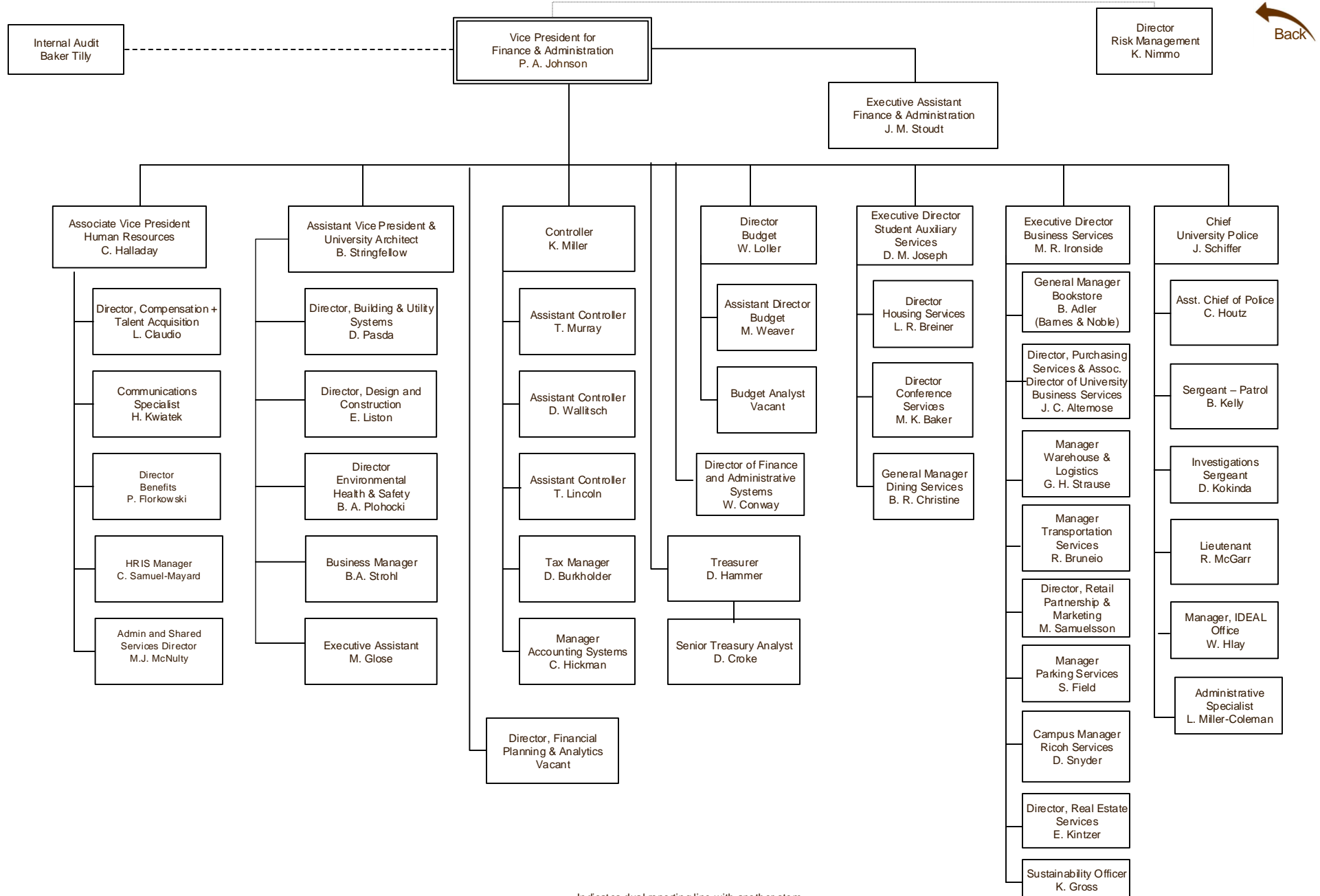


..... Indicates dual reporting line  
———— Indicates direct report

# Organization Chart

## Finance & Administration

Last Update:  
February 12, 2020

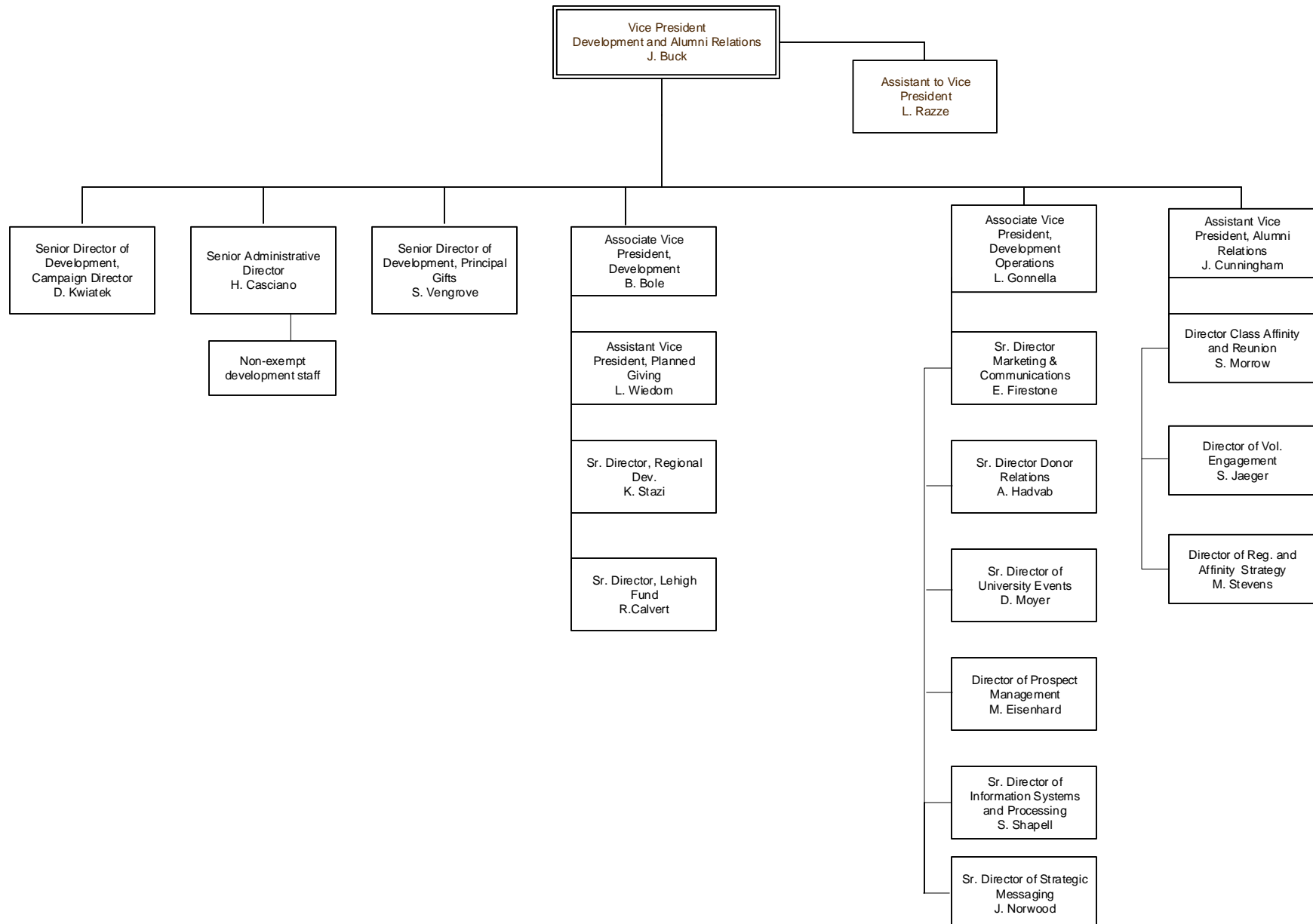


[Back](#)

# Organization Chart

## Development and Alumni Relations

Last Update:  
August 12,  
2019



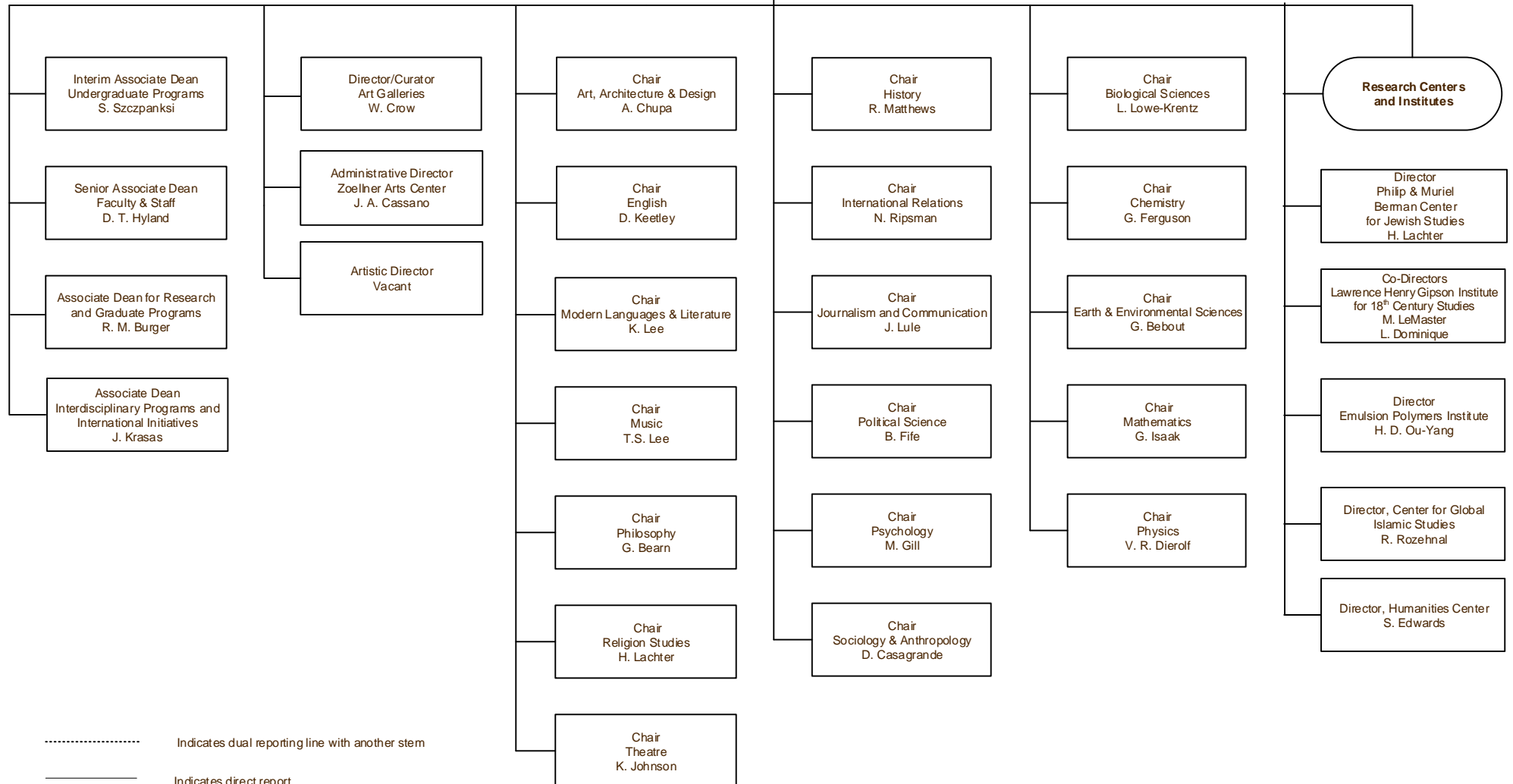
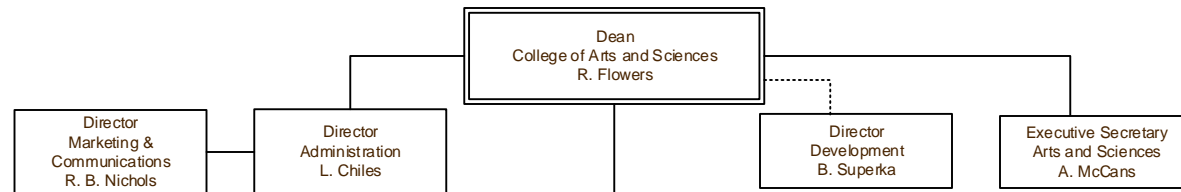
Indicates direct report



# Organization Chart

## College of Arts & Sciences

Last Update:  
January 23, 2020



..... Indicates dual reporting line with another stem  
— Indicates direct report

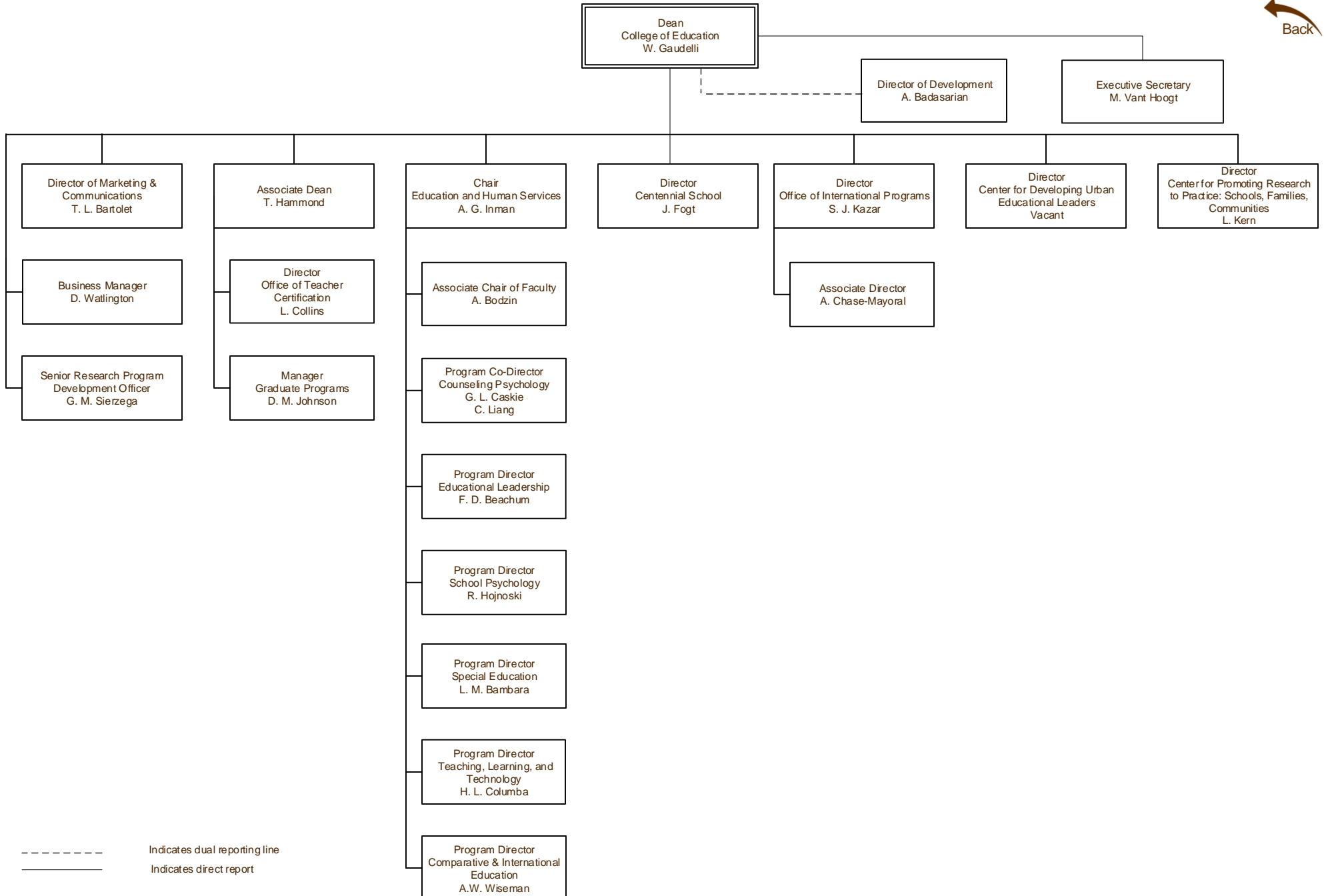


# Organization Chart

## College of Education

Last Update:  
September 6, 2018

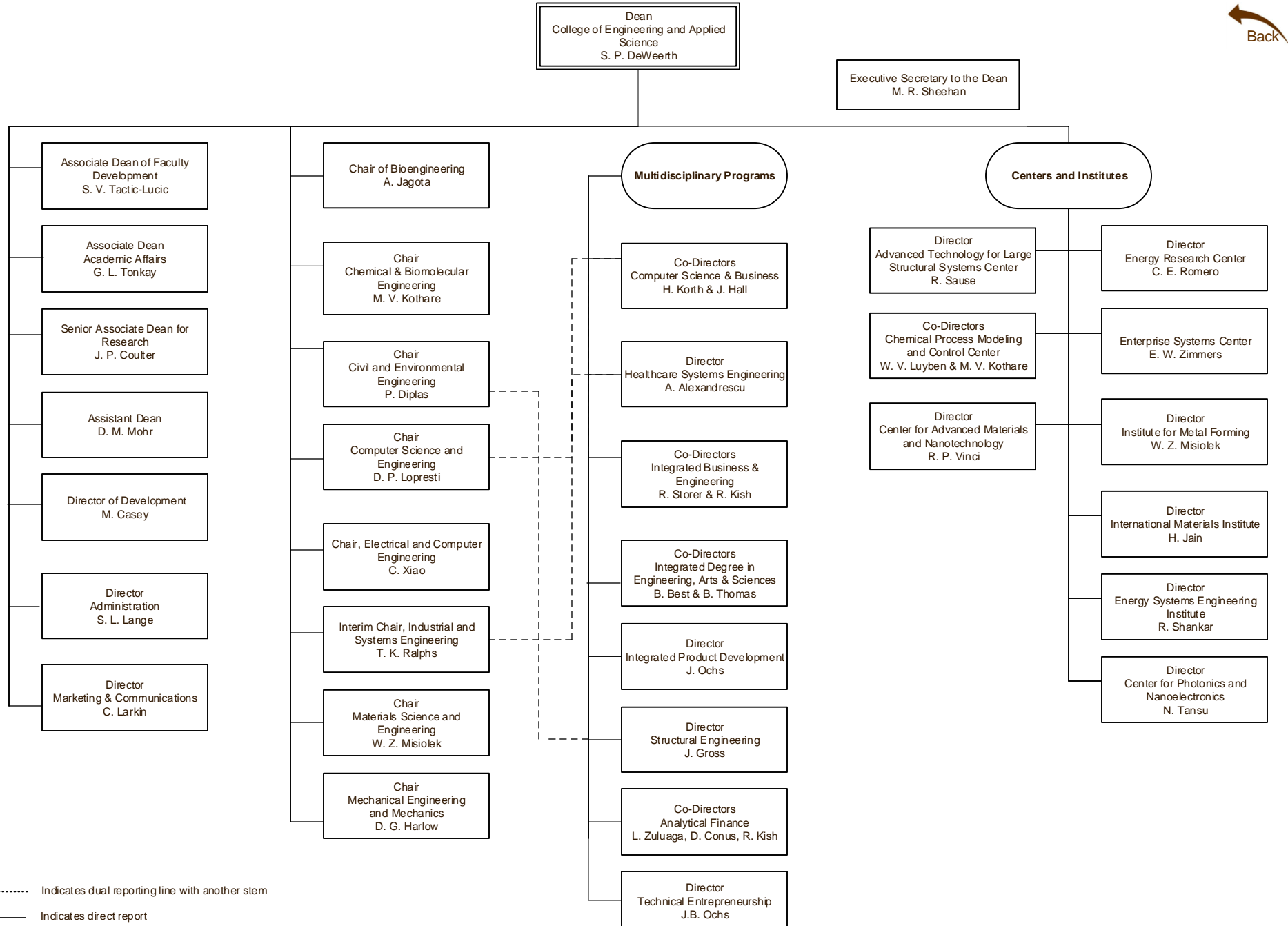
[Back](#)



# Organization Chart

## P.C. Rossin College of Engineering & Applied Science

Last Update:  
January 3, 2018



Back



# Organization Chart

## College of Health

Last Update:  
June 24, 2019



Inaugural Dean  
College of Health  
W. P. Witt

Director of Administration  
S.L. Buss

Associate Professor  
H. G. Skinner

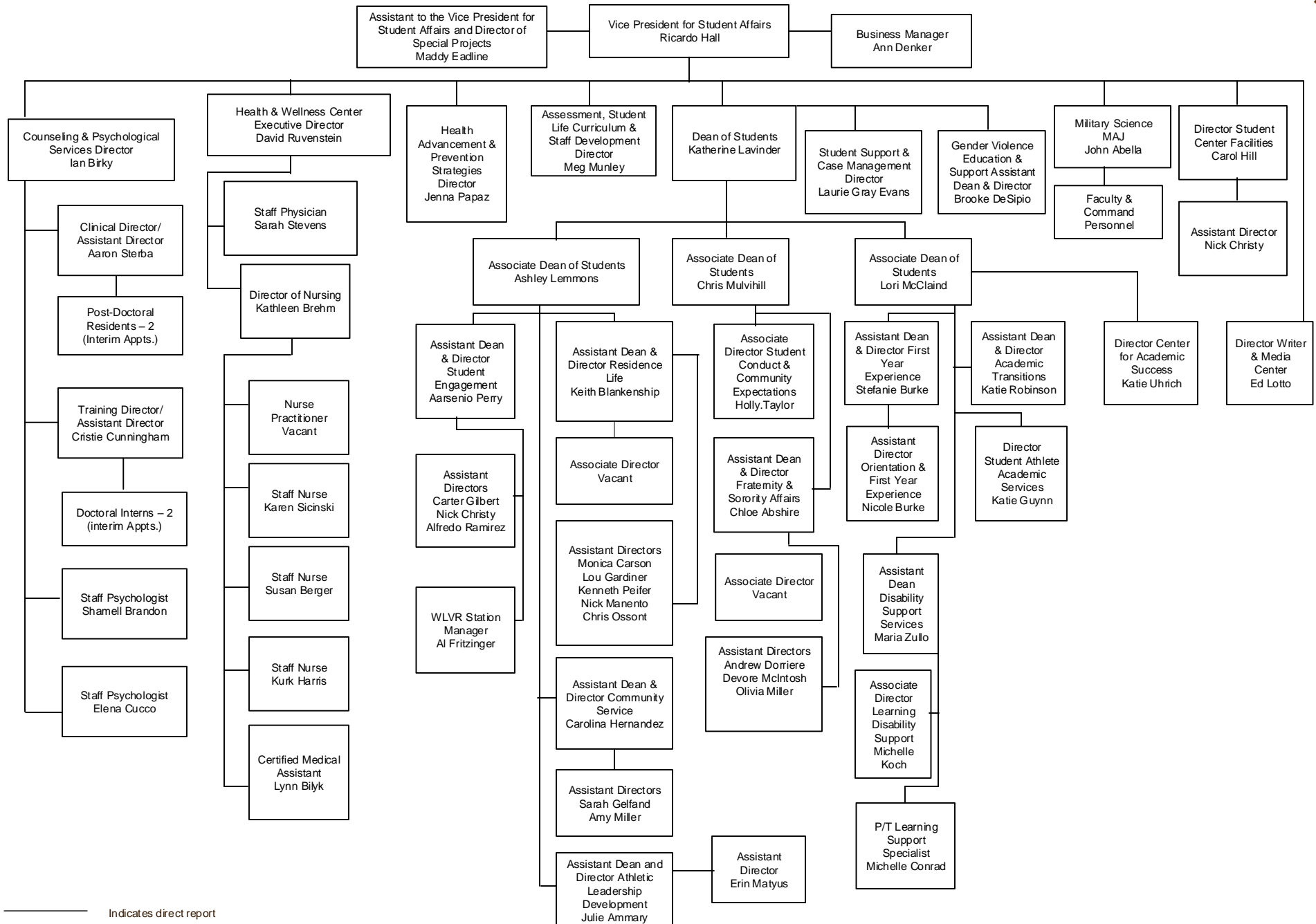
\*reports to Deputy Provost for  
Faculty Affairs  
R. A. Flowers\*

\_\_\_\_\_ Indicates direct report

# Organization Chart

## Student Affairs

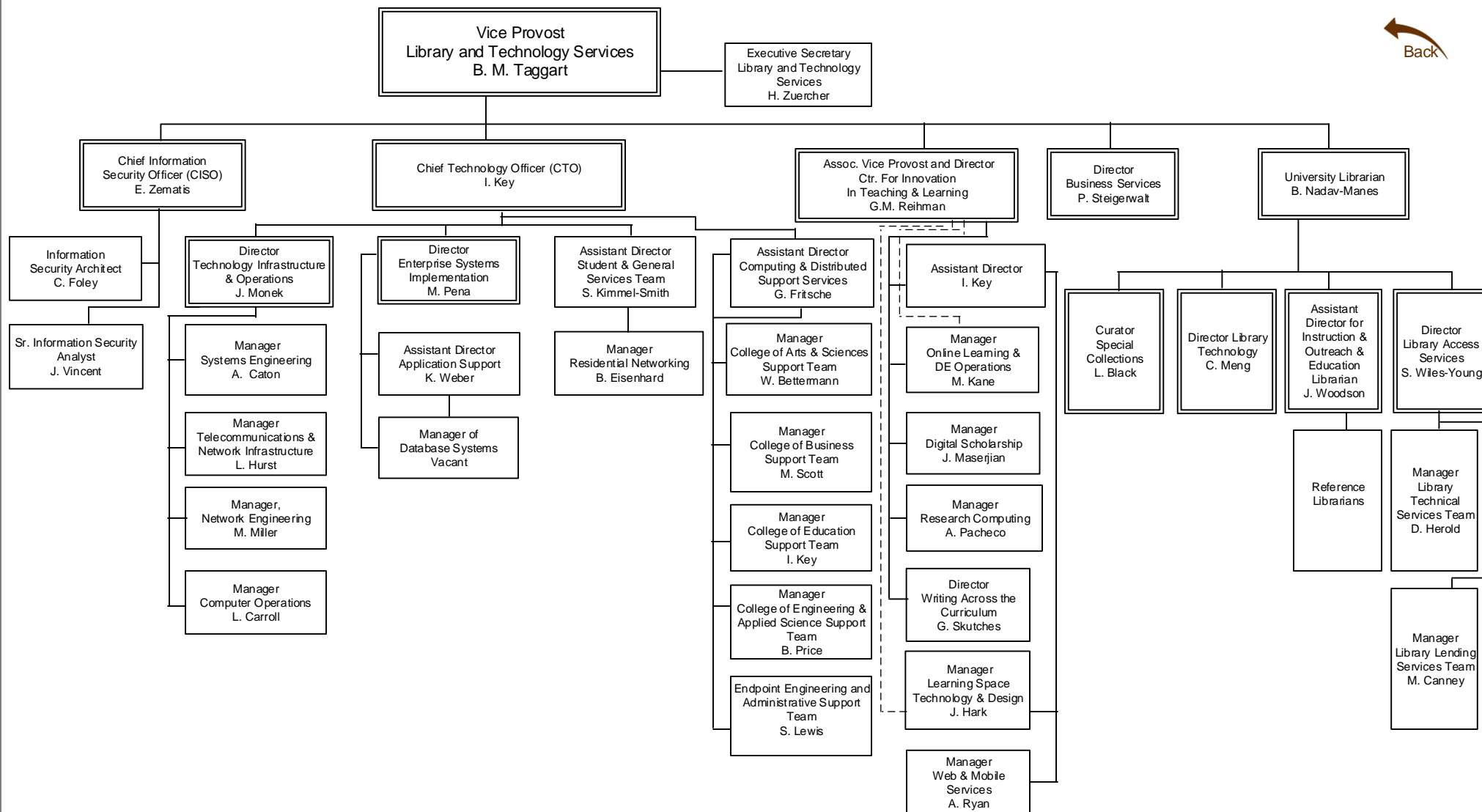
Last Update:  
October 14, 2019



# Organization Chart

## Library & Technology Services

Last Update:  
October 2, 2019



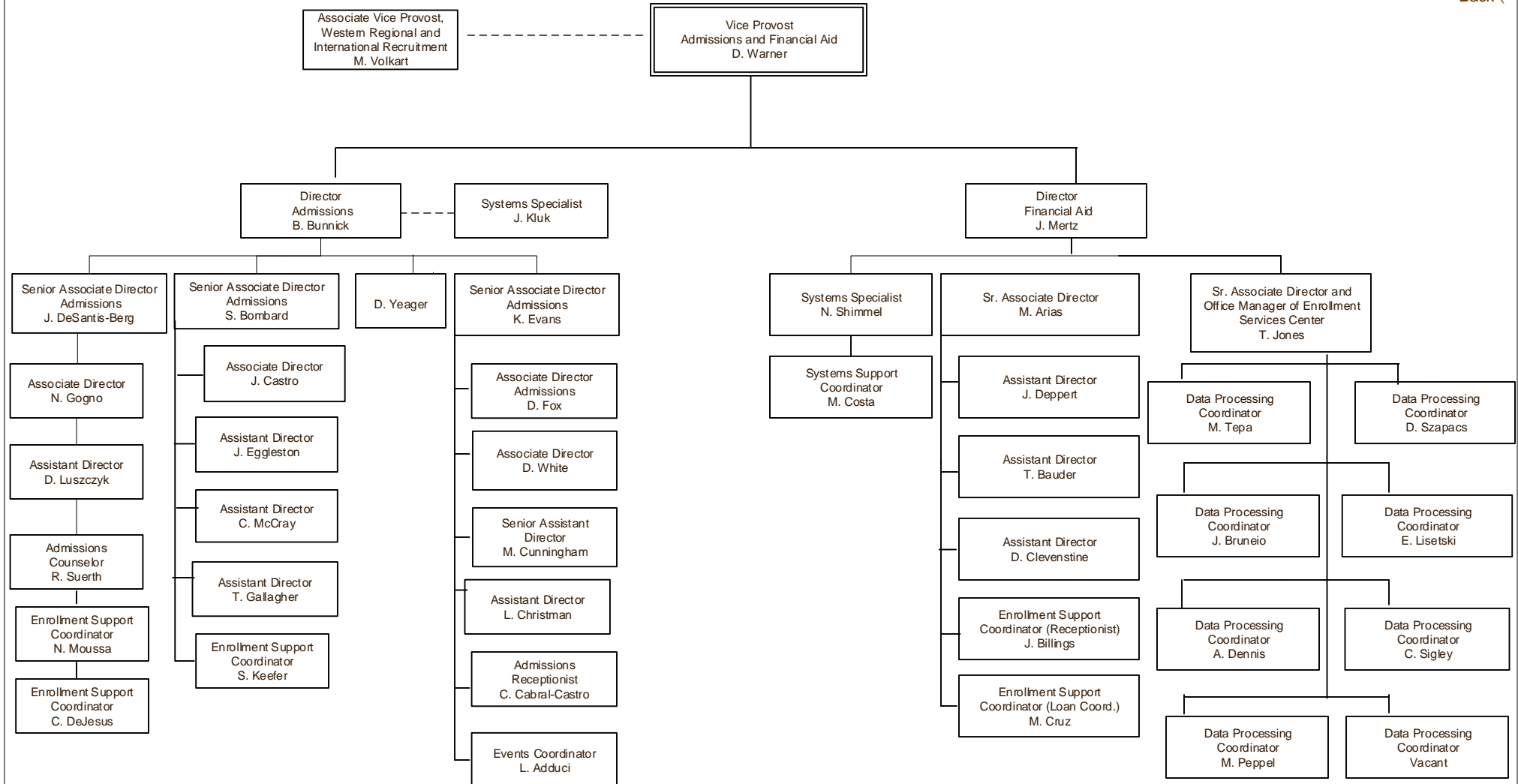
———— Indicates direct report  
- - - - - Indicates dual reporting line



# Organization Chart

## Admissions & Financial Aid

Last Update:  
July 8, 2019

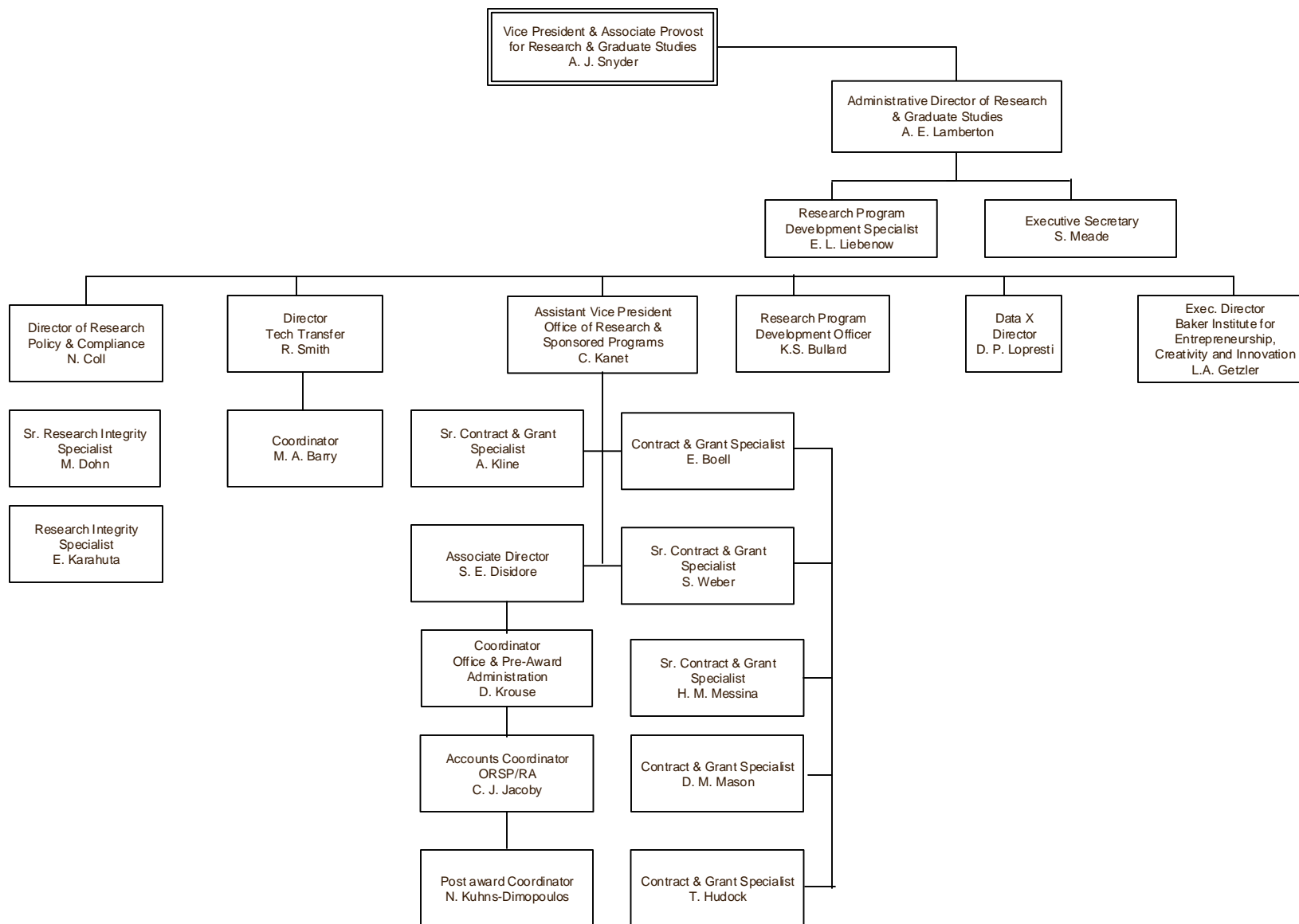


————— Indicates direct report

# Organization Chart

## Office of the Vice President & Associate Provost for Research & Graduate Studies

Last Update:  
January 6, 2020



----- Indicates dual reporting line with another stem

———— Indicates direct report

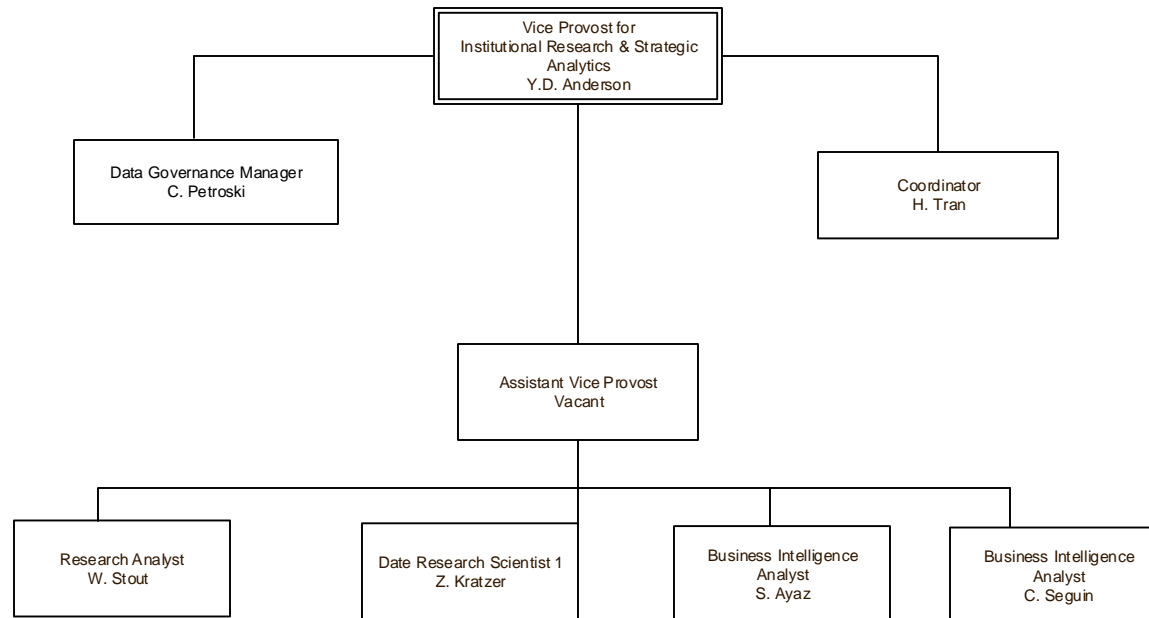


# Organization Chart

Last Update:  
October 16, 2019

## Office of Institutional Research and Strategic Analytics

 Back



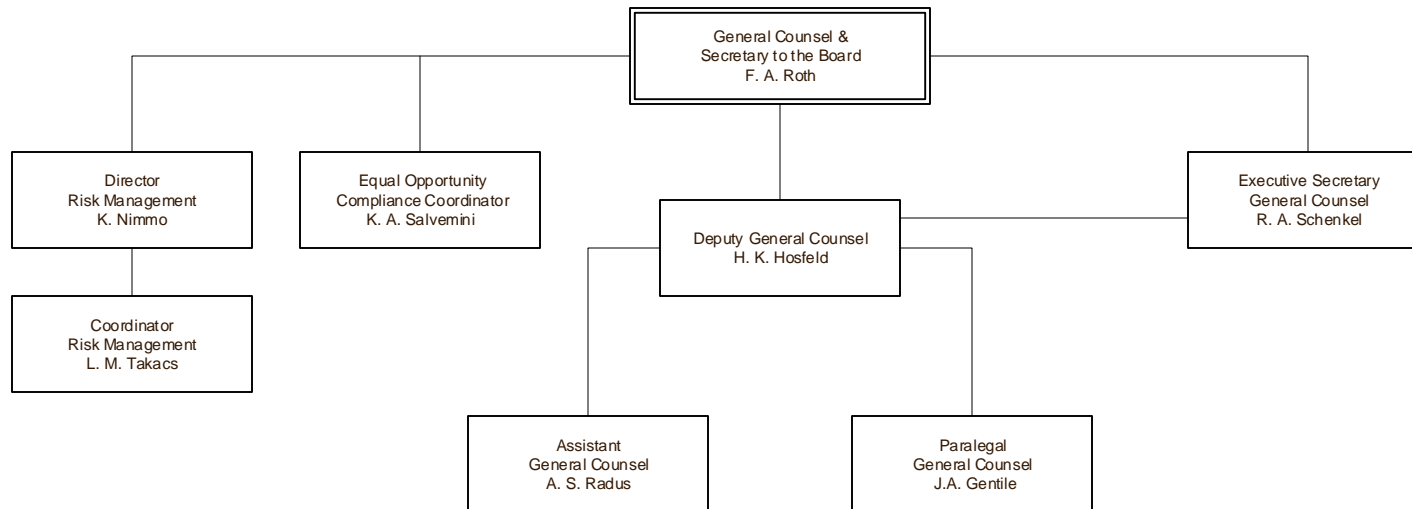
— Indicates direct report

# Organization Chart

## General Counsel

Last Update:  
**June 4, 2019**

 Back

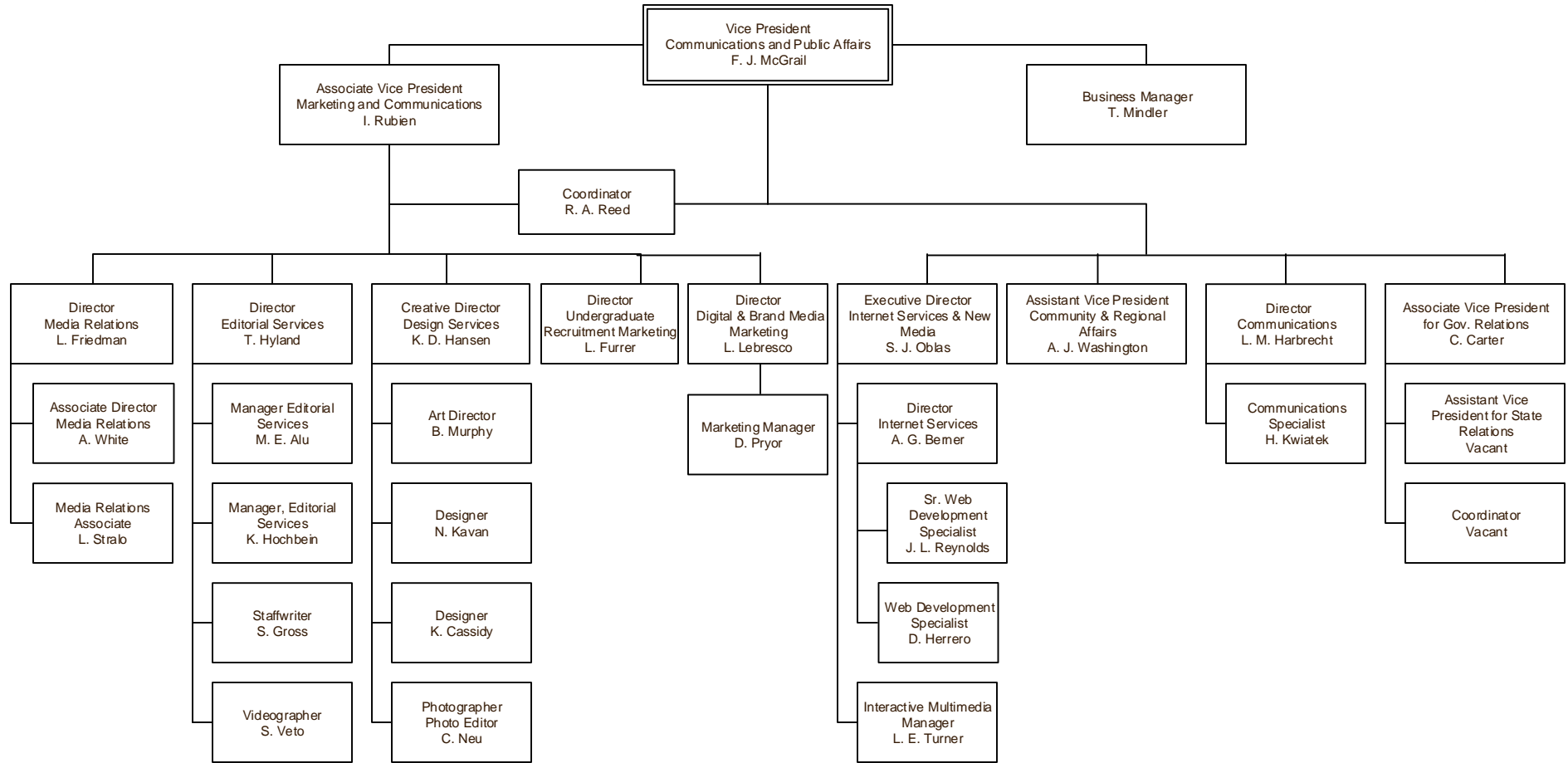


— Indicates direct report

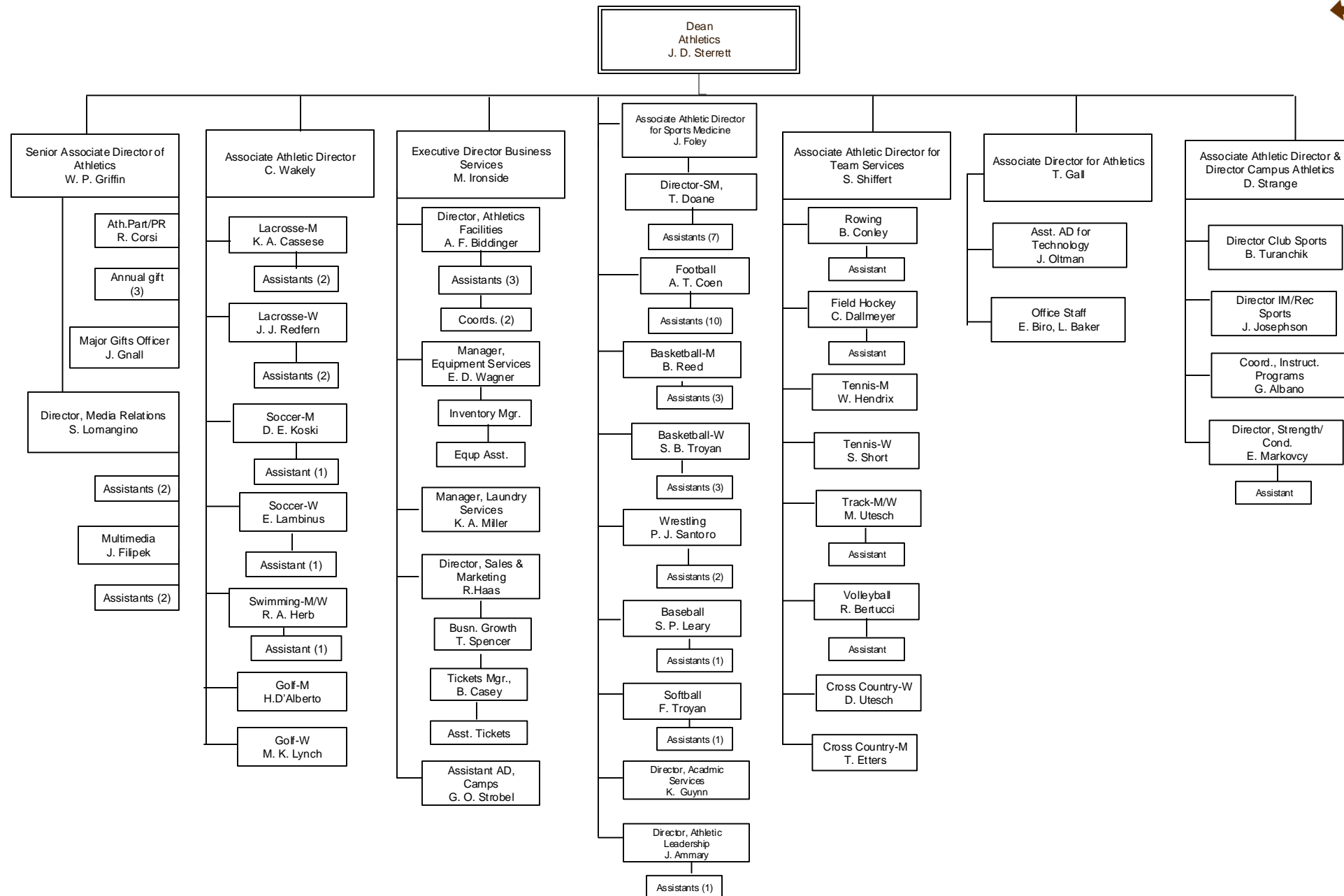
# Organization Chart

## Communications and Public Affairs

Last Update:  
May 3, 2019



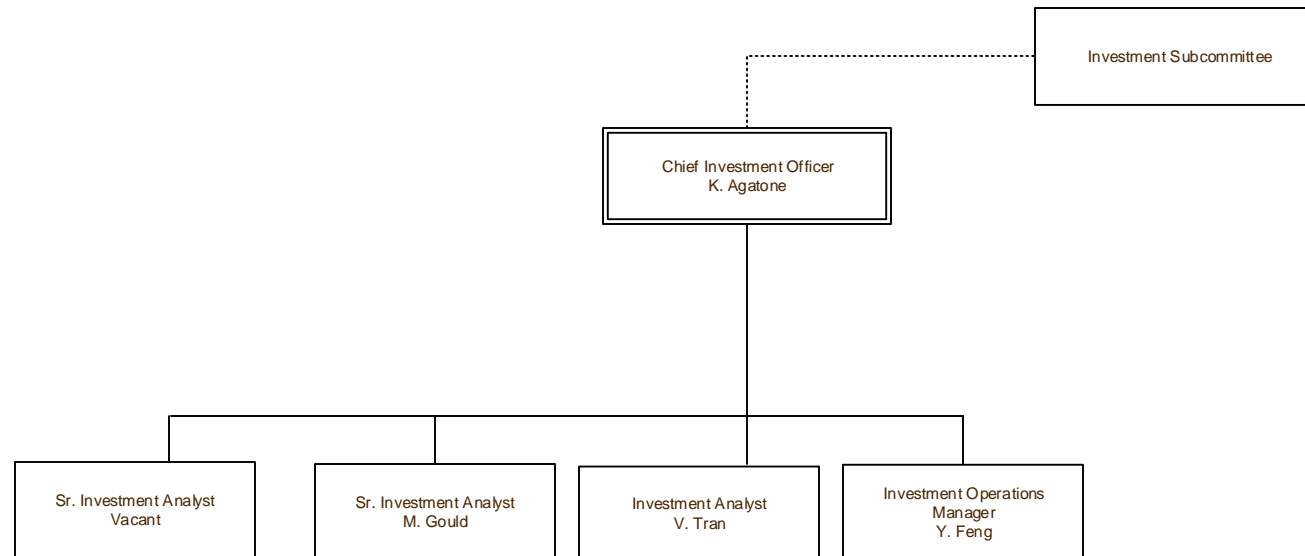
## Athletics



# Organization Chart

## Investment Office

Last Update:  
December 17, 2018



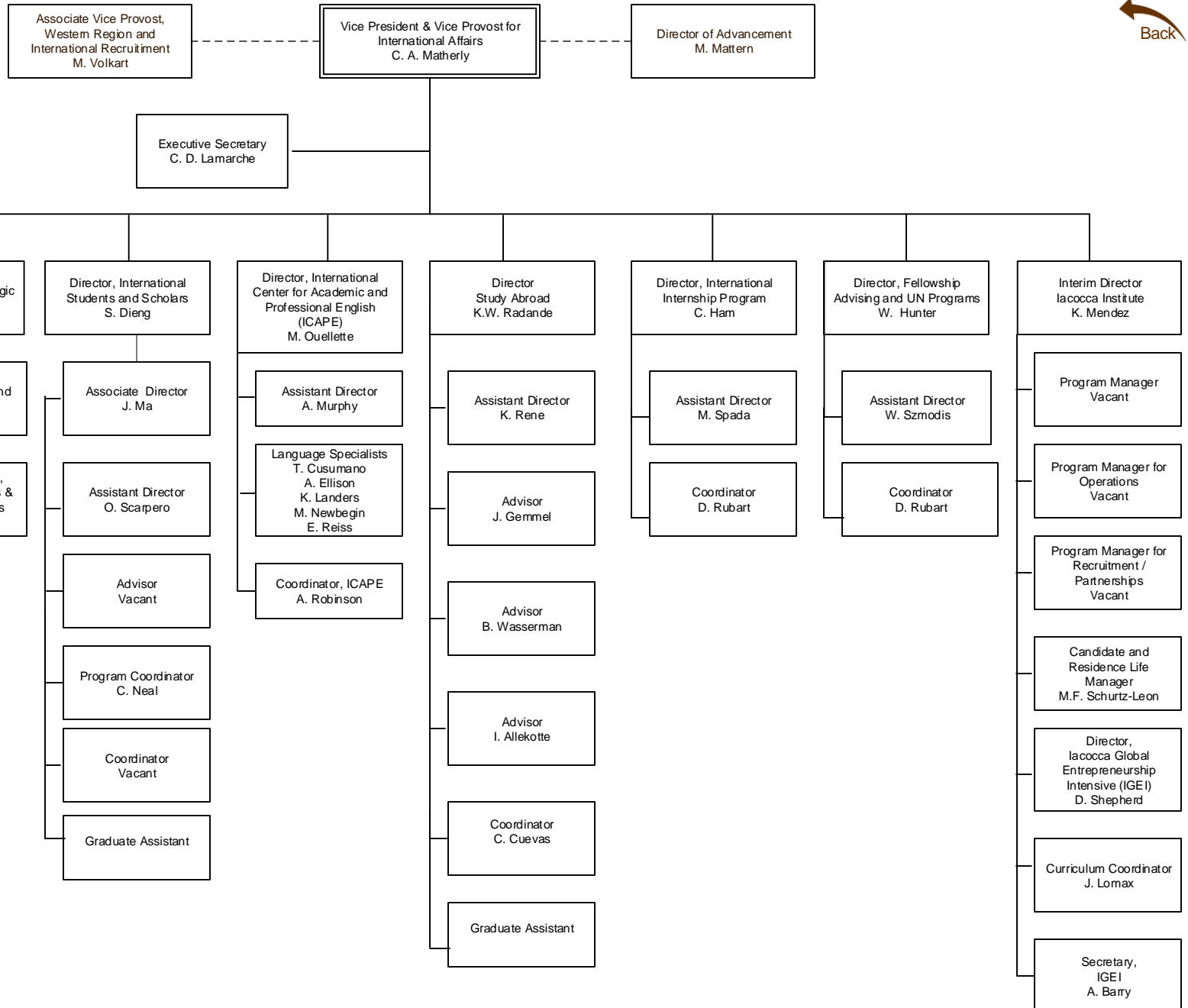
..... Indicates dual reporting line with another stem

———— Indicates direct report

# Organization Chart

## International Affairs

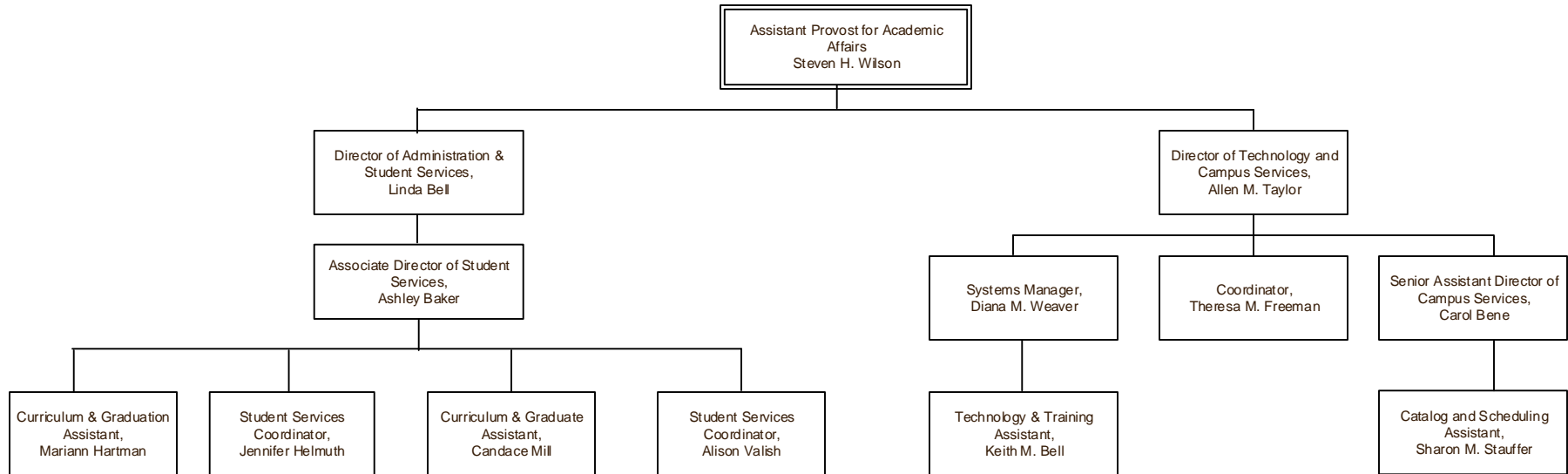
Last Update:  
November 1, 2019



# Organization Chart

## Registration & Academic Services

Last Update:  
January 9, 2019





# Organization Chart

## Enrollment Management Services

Last Update:  
September 20, 2018

