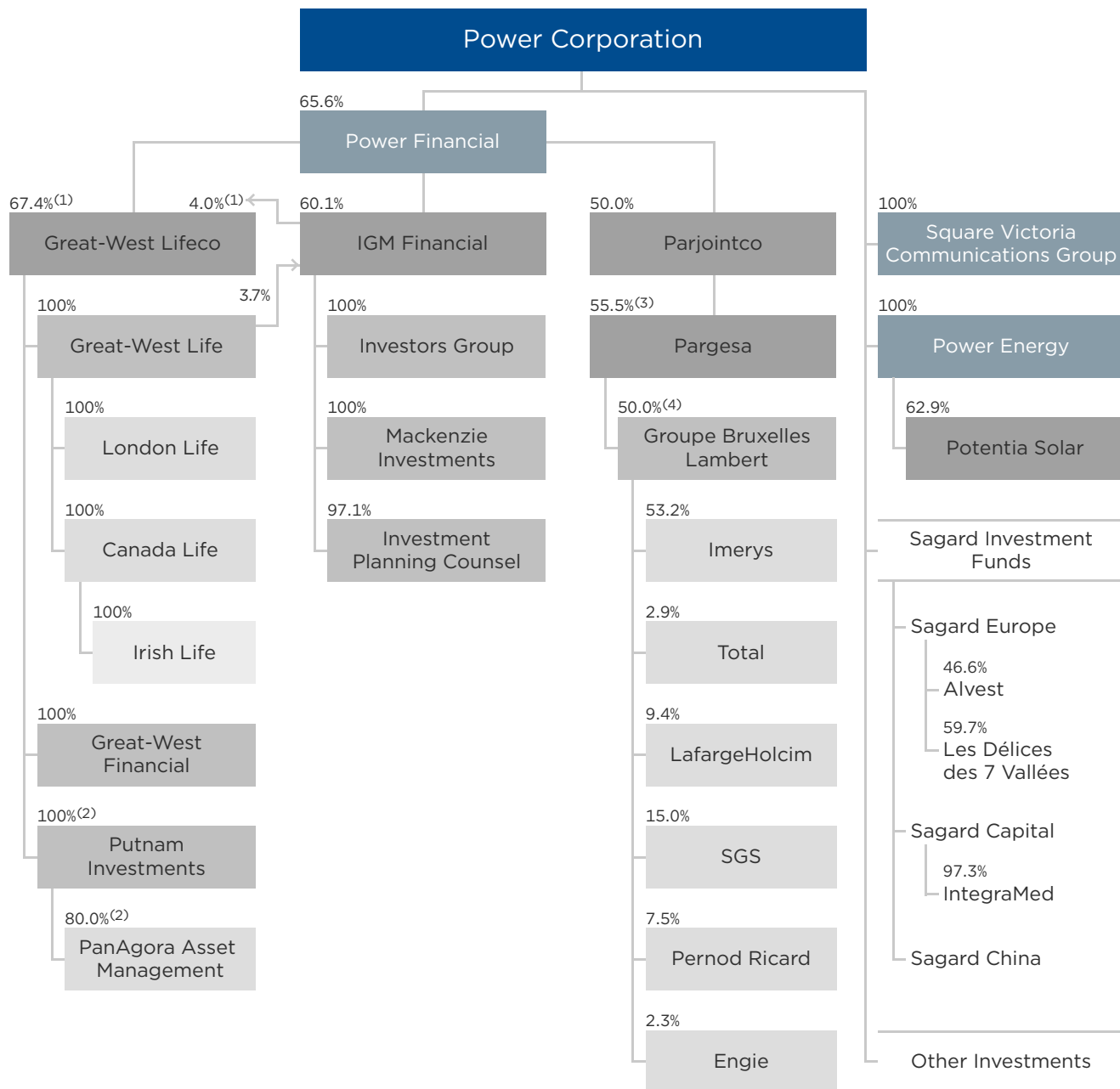


Organization Chart



Percentages denote equity interest as at September 30, 2015, unless otherwise noted.

(1) Together, approximately 65% direct and indirect voting interest.

(2) Denotes voting interest.

(3) Parjointco held a voting interest of 75.4% in Pargesa.

(4) Pargesa held a voting interest of 52.0% in Groupe Bruxelles Lambert.