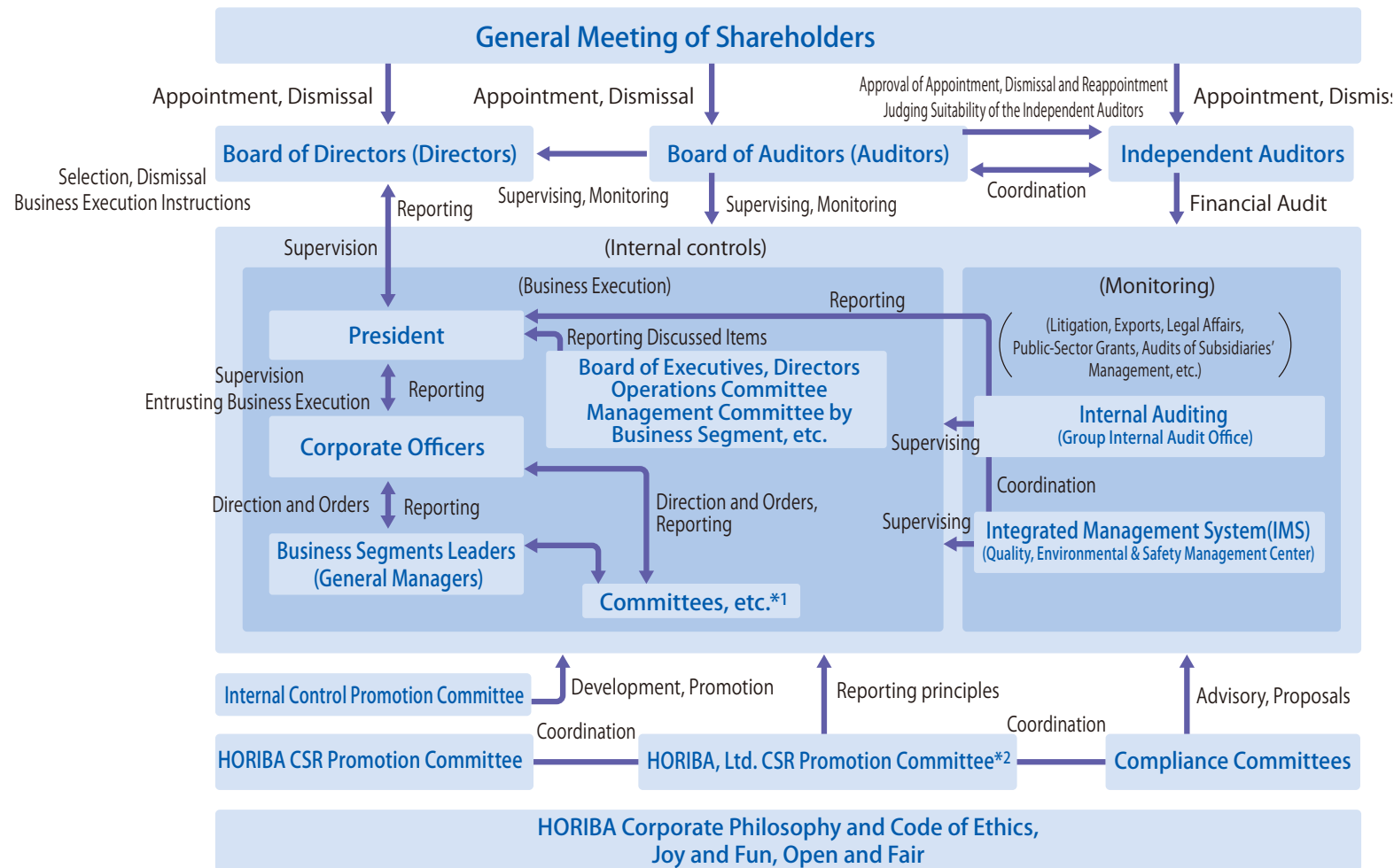


A-c Corporate Governance Structure Chart

Corporate Governance Structure Chart



*1: Committees, etc. refer to committees and conferences that are established and registered based on the "Regulations concerning conferences and committees," such as the Promotion Committee for Management of Business with Public Subsidies and the Safety and Health Committee.

*2: The CSR Promotion Committee decides on the CSR Policy and priority measures and organizes CSR-related specific activities. In addition, it discusses and approves issues and measures concerning the promotion of risk management.

KEYWORDS

CSR Policy | Lead Issues | Corporate Governance | Internal Controls | Compliance | Risk Management | Legal Training | Global Compact