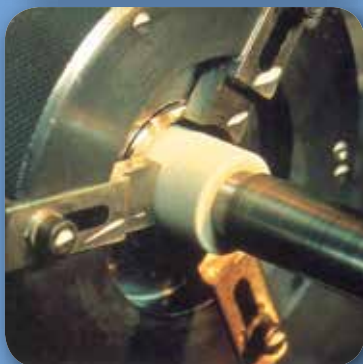


A Division of Grindwell Norton Ltd.

Bonded Abrasives Standard Stock Price List

EFFECTIVE 1ST OCTOBER, 2017

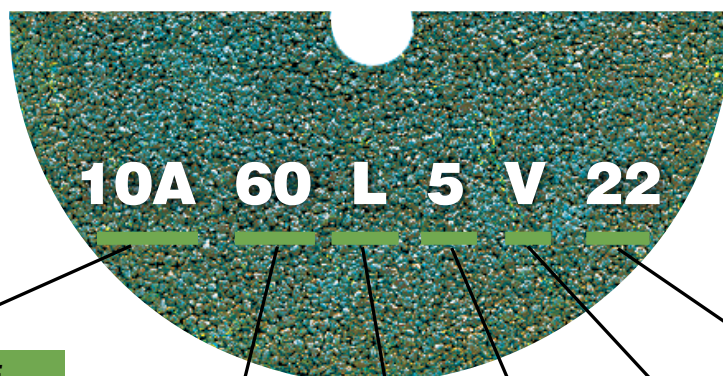


**Abrasives
for every
application**



Specification Marking

Decoding of Specification on the Grinding Wheel



ABRASIVE

10A - Brown AlO
 89A - White AlO
 50A - Brown + White AlO
 88A - Pink AlO
 90A - Pink + White AlO
 C - Green SiC
 IC - Black SiC
 CG - Green + Black SiC
 CC - Green + Black SiC

GRADE

F	J	N	R
G	K	O	S
H	L	P	T
I	M	Q	U

BOND TYPE

V	Vitrified
B	Resinoid

STRUCTURE

1	5	9
2	6	10
3	7	11
4	8	12

GRIT SIZE

8	24	80	240
10	30	100	280
12	36	120	320
14	46	150	400
16	54	180	600
20	60	220	800

ORIENT BOND CODE

V17	V22	V42
V217	V41	V501
V93	V22C	
BO	B84	etc.

Contents

Standard Shapes, Types and Faces of Grinding Wheels	ii
Standard Shapes of Mounted Points	iv
Pricing Principles	v
Basic Price Tables	
– Vitrified & Resinoid Plain Grinding Wheels	vi
– Mounted Wheels and Points	vii
– ‘F’ Type Disc Wheels	viii
– Specialities	ix
– Rubbing Bricks, Roll Scouring Blocks and Dressing Sticks	x
– Honing Sticks	xi
– Standard Type Segments	xii
– Finished Sticks, Rubbing Bricks and Sticks	xiii
– Unmounted Honing Stones	xiv
Schedule of Surcharges	xv
Multiplier Schedule for Non-Standard Bonded Abrasive Products	xvi
Quantity Schedule	xvii
Standard Stock Price Lists	
Bonded Abrasives	
– CP Snagging Wheels	1
– Portable Wheels	1
– Organic Segments, Straight / Taper Cup Wheels and Reinforced Cut-Off Wheels	1
– Offhand Wheels	2
– Toolroom Wheels	4
– Surface Grinding Wheels	4
– Vitrified Straight Cup / Tapered Cup / Dish / Saucer Wheels	5
– Vitrified Segments / Type 2 Wheels	5
– Carbide Grinding Wheels	6
– Saw Gumming Wheels	6
– Cylindrical Grinding Wheels	7
– Crankshaft and Centreless Grinding Wheels	8
– Rubber Bonded Regulating Wheels/ Recess on Both Sides Wheels / Roll Grinding Wheels	9

Standard Types, Shapes and Faces of Grinding Wheels & Mounted Points

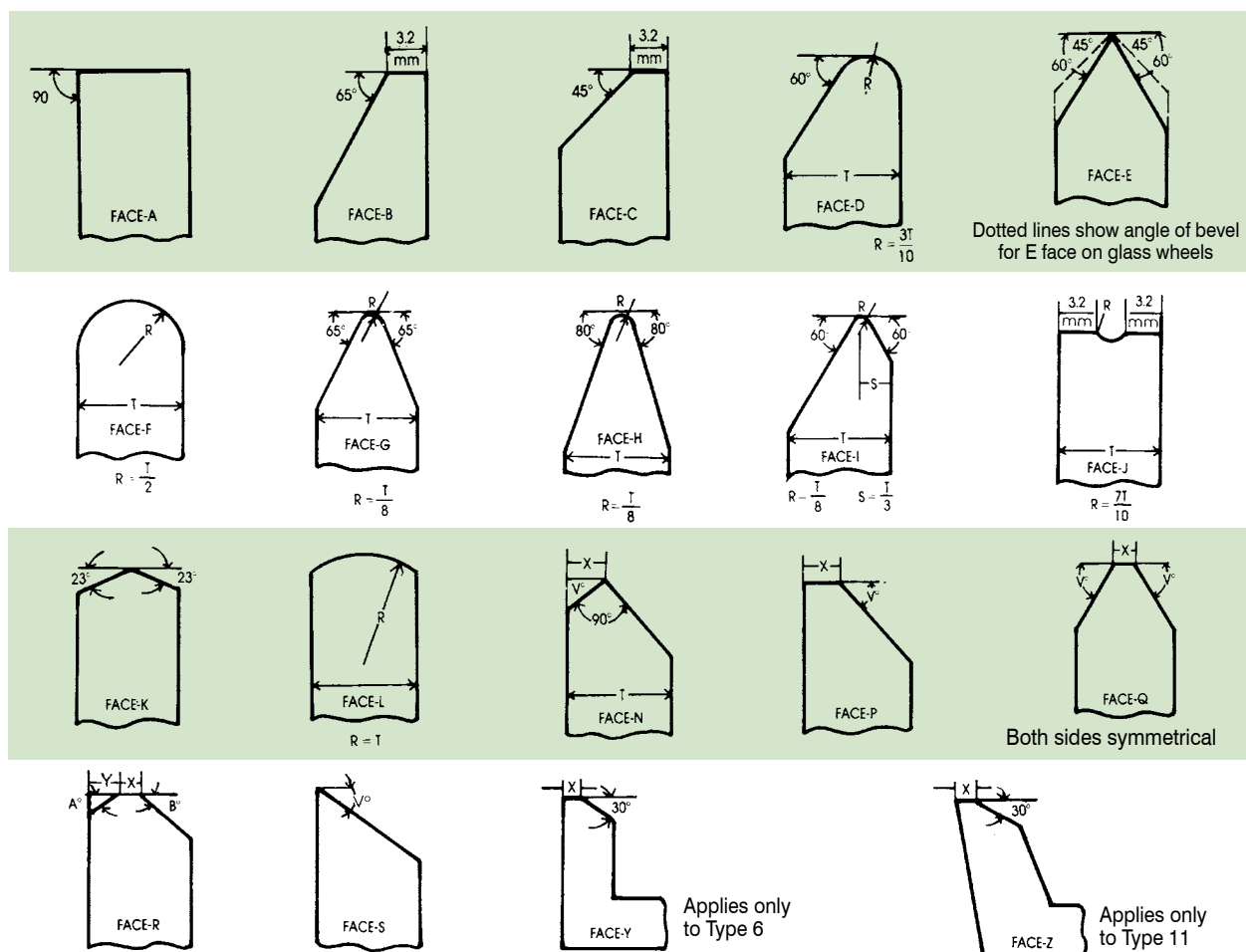
Commonly Used Shapes of Wheels and Wheel Faces

The Shapes and Faces shown in the following pages cover the bulk of grinding wheels used. These 'Type' numbers, when used with dimensions, corresponding to the applicable letter symbols, make it possible to define completely the shape and size of any standard wheel, without the necessity of submitting a drawing.

Key to Letter Dimensions

A	–	Radial width of flat at periphery.
B	–	Depth of blind hole bushing.
D	–	Diameter (overall)
E	–	Thickness at hole
F	–	Depth of recess on one side
G	–	Depth of recess on other side
H	–	Hole diameter
J	–	Diameter of outside flat
L	–	Length
K	–	Diameter of inside flat
N	–	Depth of relief one side
O	–	Depth of relief on other side
P	–	Diameter of recess
R	–	Radius
T	–	Thickness (overall)
U	–	Width of edge
V	–	Face angle
W	–	Wall (rim) thickness at grinding face
PCD	–	Pitch Circle Diameter

Standard Shapes of Grinding Wheels

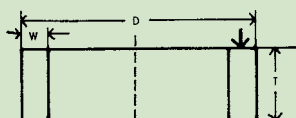




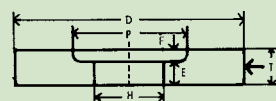
Standard Types of Grinding Wheels



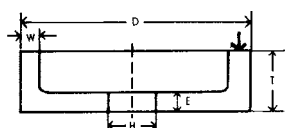
Type 1 - Straight Wheel



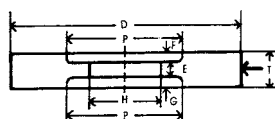
Type 2 - Cylinder Wheel



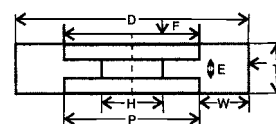
Type 5 - Wheel, recessed one side



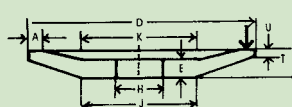
Type 6 - Straight Cup Wheel



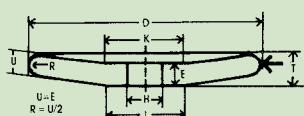
Type 7 - Wheel, recessed two sides



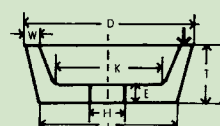
Type 9 - Straight Double Cup Wheel



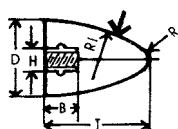
Type 12 - Dish Wheel



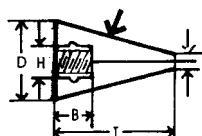
Type 13 - Saucer Wheel



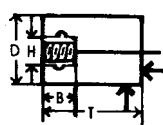
Type 11 - Flaring Cup Wheel



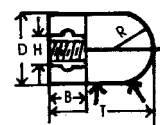
Type 16 - Cone, Curved Side



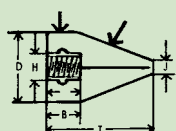
Type 17 - Cone, Straightside square tip



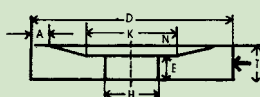
Type 18 - Plug, square end



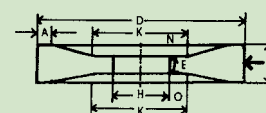
Type 18 R - Plug, round end



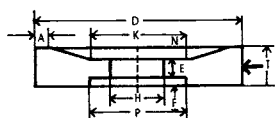
Type 19 - Plugs, conical end, square tip



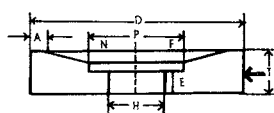
Type 20 - Wheel, relieved one side



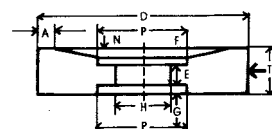
Type 21 - Wheel, relieved two sides



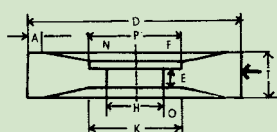
Type 22 - Wheel, relieved and recessed other side



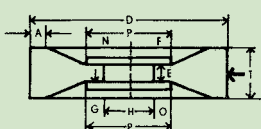
Type 23 - Wheel, relieved and recessed same side



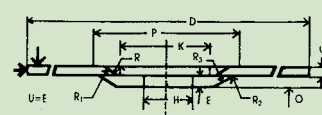
Type 24 - Wheel, relieved and recessed one side, recessed other side



Type 25 - Wheel, relieved and recessed one side, relieved other side



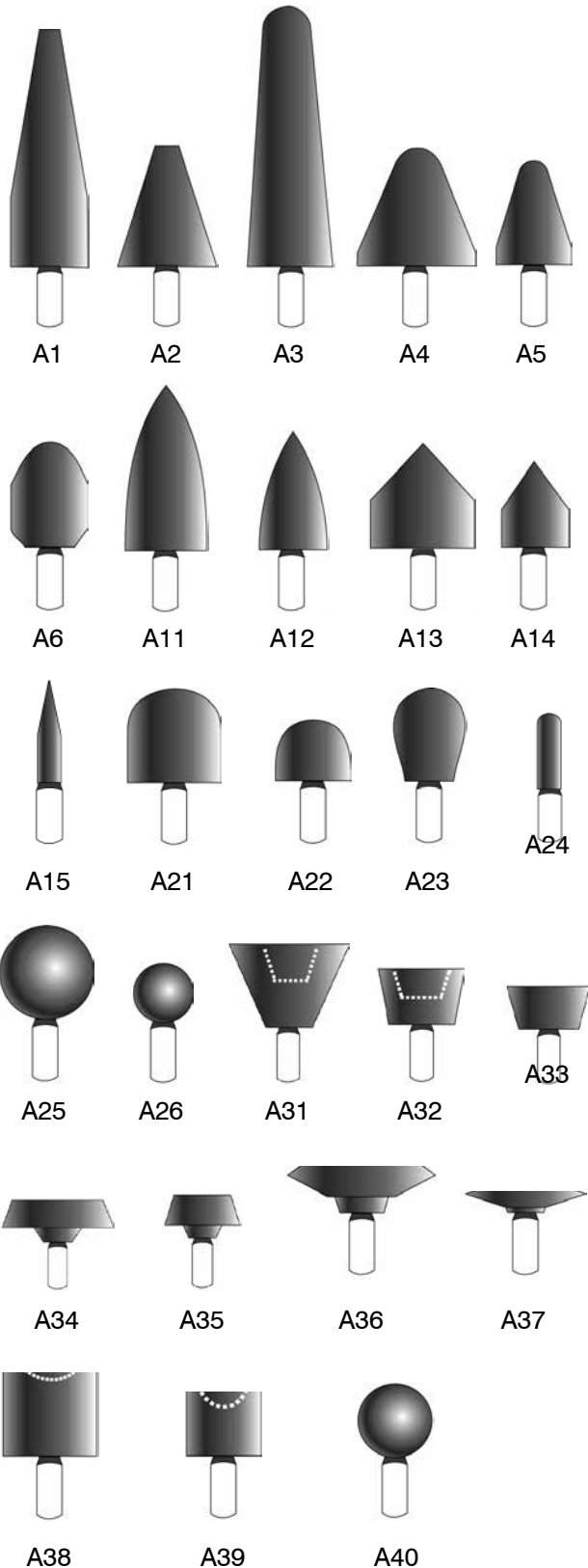
Type 26 - Wheel relieved and recessed both sides



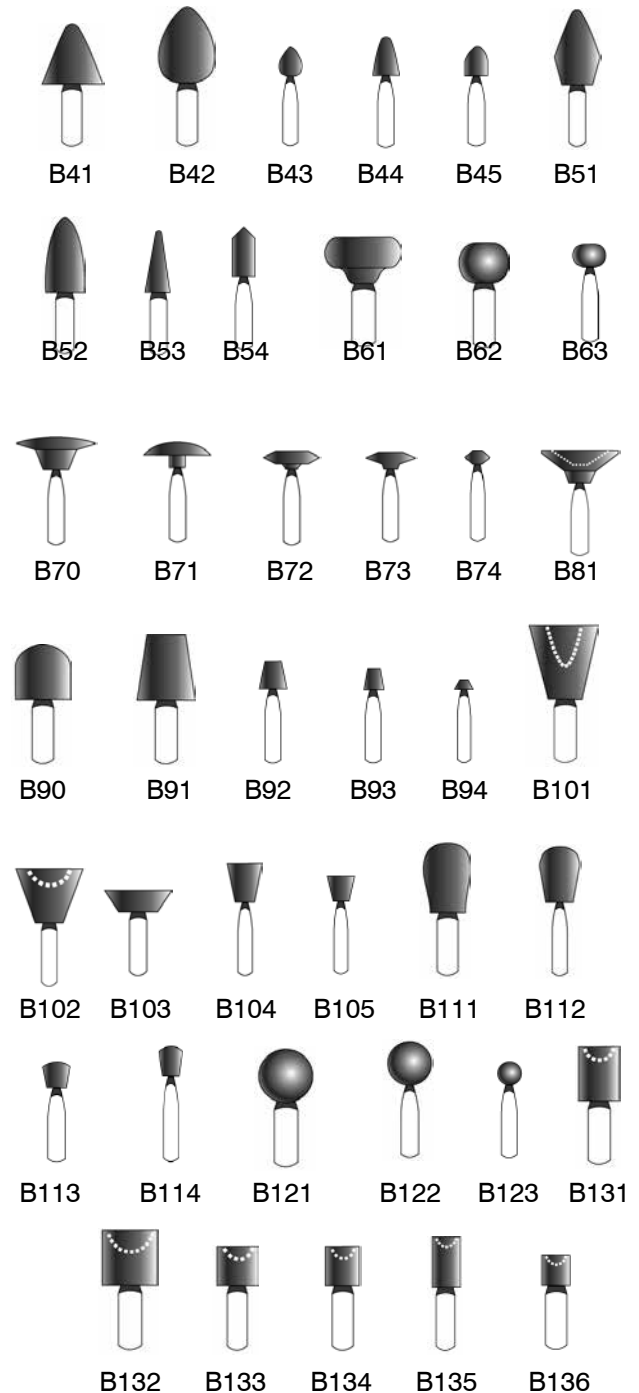
Type 27 - Wheel, depressed centre

Standard shapes of Mounted Points

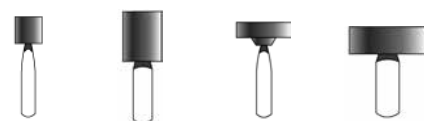
'A' Shapes



'B' Shapes



'W' Shapes





Basic Price Calculation

Basic Price of a wheel =
 Price from Basic Price Table
 - Hole Allowance
 + Surcharge

Basic Price Calculation for specific cases is illustrated below.

PLAIN WHEELS

Diameter

Wheels of diameter less than 25mm take the basic price of a 25mm wheel.

Wheels of diameters intermediate to those shown in the list take the basic price of the next larger diameter.

Examples: A wheel of 160 mm takes the basic price of 175 mm wheel.

Wheels with standard faces, A to L, are priced as plain wheel.

Thickness

Wheels of thickness intermediate to those shown in the list take the basic price of the next thicker wheel.

Examples: To find the price of a wheel
 760 x 250 x 300,
 take the Price of a wheel
 760 x 200 = Rs. 1732.00
 divide it by 200,
 multiply by 250
 = 2165.63
 and round it off to the nearest 0.25 P.

Similarly, to find the hole allowance, take the price of a 300 x 200 hole = Rs. 116.50, divide by 200, multiply by 250 and round it off to the nearest 0.25 P. Therefore, the basic price of the wheel 760 x 250 x 300 = Rs. 2165.75 less Rs. 145.75 = Rs. 2020.00

Hole Allowance

A hole allowance is applicable for all type 1 & 2 wheels, 25mm thick or more, where the hole is 150 mm or larger.

Hole allowance is also applicable to all type 5 & 7 wheels 25 mm thick or more, where the hole is 150 mm or larger provided the total recess depth does not exceed 6 mm.

If the hole diameter is other than those shown in the list, the next smaller diameter is taken for computing the allowance.

CUP WHEELS

For cup wheels for the limits shown below, the basic price will be the basic price of the plain wheel of the same diameter and thickness less 10% calculated to the nearest 25 paise.

Outside diameter	200 mm or more
Height	100 mm or more
Inside diameter	not less than 150 mm
Inside cup depth	not less than 60 mm
Rim and back thickness	not exceeding 80 mm

Cup wheels less than 200 mm diameter are priced at overall dimensions of the plain wheel price list.

No hole allowance is given on either straight cup (Type 6) or taper cup (Type 11) wheels.

DISH WHEELS

Dish wheels (Type 12) and saucer wheels (Type 13) are priced at overall dimensions of the plain wheel price list plus 20%.

SPECIAL SHAPES WHEELS

Special shapes wheels are priced at overall dimensions of the plain wheel price list less hole allowance where applicable plus the appropriate surcharge (see schedule of surcharges). Certain wheels made to specially drawn sketches, regardless of size, are subject to special prices.

List prices for special shaped wheels not covered by the schedule of surcharges may be obtained on request.

Basic Price Table for Vitrified and Resinoid Plain Grinding Wheels

DIA	THICKNESS																					
MM	3-4	6-7	9-10	12-13	19-20	25-27	30-33	37-40	50-53	61-65	70-80	85-91	98-104	111-116	124-129	136-142	150-155	162-167	175-180	187-192	200-205	
24-27	1.50	1.75	2.00	2.25	3.00	3.50	3.75	4.25	5.50	6.75	7.50	9.00	9.75									
36-40	1.75	2.00	2.25	2.75	3.25	4.00	4.50	4.75	6.25	7.25	8.75	9.75	10.75	12.25	13.75	15.00	16.25					
48-52	2.00	2.75	3.00	3.50	4.00	5.00	5.50	6.00	7.50	9.25	10.50	11.50	12.75	14.50	16.25	17.50	19.25	20.75	22.00	24.25	25.75	
61-65	2.25	3.00	3.50	4.00	4.50	5.50	6.00	6.75	8.50	10.00	11.50	12.75	14.50	16.25	17.75	20.00	22.00	23.75	25.25	27.25	29.00	
74-80	3.00	3.50	3.75	4.25	5.00	6.25	6.75	7.50	9.50	11.00	12.75	14.25	15.75	17.75	19.75	21.50	23.75	25.75	27.25	29.50	31.50	
87-93	3.50	4.00	4.50	5.00	6.00	7.00	8.25	9.00	10.75	12.75	14.75	16.75	18.50	20.00	23.00	25.25	27.75	30.00	32.50	34.75	37.25	
99-104	4.25	4.75	5.25	6.00	7.00	8.50	9.75	10.75	13.25	15.75	18.00	20.25	22.50	25.25	28.25	31.00	33.50	36.75	39.50	42.50	45.25	
111-116	5.25	5.75	6.25	7.00	8.50	10.00	11.25	12.50	15.50	18.50	21.25	24.25	26.75	30.00	33.00	37.25	40.00	43.00	46.75	50.00	53.00	
125-129	6.25	6.50	7.25	8.25	9.75	11.50	13.25	14.75	17.75	21.50	24.75	27.75	31.00	35.25	38.75	43.00	46.75	50.50	54.50	58.25	62.00	
150-155	7.50	8.50	9.25	10.50	12.50	14.75	17.00	19.25	23.00	27.75	32.50	36.75	41.50	46.25	51.50	56.25	61.50	66.25	71.50	75.50	80.75	
175-180	9.00	10.00	11.25	12.50	15.75	18.50	21.00	24.25	29.50	36.25	42.50	48.75	55.25	61.50	68.25	74.50	80.75	88.25	97.75	100.75	108.25	
200-205	10.50	11.75	13.75	15.25	19.25	22.50	26.25	30.00	37.25	45.75	54.00	62.00	70.25	78.75	87.25	95.50	104.00	112.25	120.75	130.25	137.50	
225-230	11.75	14.00	16.25	17.75	22.50	27.25	32.00	36.25	46.25	56.75	67.25	77.75	88.25	97.75	108.25	119.75	129.25	139.75	150.25	160.75	171.25	
250-256	13.25	16.00	18.75	21.00	26.75	32.00	38.25	44.00	56.25	68.25	80.75	93.50	106.00	119.75	132.25	145.00	157.50	170.00	182.75	196.25	206.75	
300-307	15.50	21.50	24.25	27.75	35.75	44.00	52.50	61.00	78.75	95.50	113.50	131.25	149.00	167.00	184.75	202.75	220.50	239.50	254.00	274.00	290.75	
350-360		25.25	31.00	35.75	46.25	57.75	69.25	80.75	104.00	127.00	150.25	173.25	197.50	220.50	244.75	268.75	292.00	316.00	340.25	360.25	385.25	
400-408		31.50	38.75	45.75	59.75	74.50	89.25	104.00	133.25	162.75	192.25	222.50	251.00	281.50	311.75	342.25	372.75	402.25	432.50	462.00	493.50	
450-460		39.50	47.75	56.75	74.50	92.50	111.25	129.25	167.00	202.75	239.50	276.25	313.00	349.75	387.50	424.25	461.00	498.75	536.50	572.25	610.00	
500-510		48.25	59.75	70.25	92.50	114.50	136.50	158.50	204.75	250.00	294.00	338.00	381.25	426.25	472.50	516.50	562.75	607.00	653.00	697.25	742.25	
550-561		61.00	74.50	87.25	114.50	139.75	164.75	192.25	248.75	302.50	356.00	409.50	464.00	517.75	573.25	628.00	682.50	738.25	791.75	846.25	901.00	
600-612			96.50	109.25	153.25	168.00	196.25	230.00	296.00	361.25	425.25	489.25	555.50	621.50	686.75	752.75	817.00	884.00	903.00	968.00	1079.50	
655-665				135.50	184.75	199.50	231.00	269.75	349.75	426.25	502.00	577.50	656.25	735.00	812.75	890.50	968.00	1050.00	1123.50	1202.25	1279.00	
700-715				167.00	221.50	234.25	269.75	315.00	407.50	497.75	587.00	677.25	764.50	857.75	950.25	1039.50	1134.00	1225.25	1315.75	1407.00	1497.25	
755-770				204.75	245.75	272.00	313.00	364.25	471.50	576.50	679.25	782.25	886.25	992.25	1098.25	1205.50	1310.50	1415.50	1522.50	1627.50	1732.50	
805-820					314.00	360.25	428.50	542.75	662.50	780.25	897.75	1016.50	1136.00	1259.00	1398.50	1501.50	1622.25	1743.00	1863.75	1988.75		
905-920					409.50	470.50	549.25	702.50	853.75	1002.75	1149.75	1305.25	1457.50	1613.75	1764.00	1919.50	2040.25	2231.25	2385.50	2535.75		
1010-1025					521.75	604.75	691.00	882.00	1052.00	1258.00	1440.50	1631.75	1818.50	2012.75	2204.00	2392.00	2583.00	2783.50	2959.00	3150.00		
1055-1075					586.00	684.50	783.25	981.75	1188.50	1395.50	1601.25	1808.00	2017.00	2232.25	2438.00	2648.00	2855.00	3066.00	3277.00	3484.00		

Bore Allowance Schedule for Grinding Wheels

DIA	THICKNESS															
MM	25-27	30-33	37-40	50-53	61-65	73-80	85-91	98-104	111-116	124-129	136-142	150-155	162-167	175-180	187-192	200-205
150-155	3.00	3.50	4.00	4.75	5.50	6.50	7.25	8.50	9.25	10.25	11.25	12.25	13.25	14.25	15.25	16.25
175-180	3.75	4.25	4.75	5.75	7.25	8.50	9.75	11.00	12.25	13.75	15.00	16.25	17.50	19.50	20.25	21.50
200-205	4.50	5.25	6.00	7.25	9.25	10.75	12.25	14.25	15.75	17.25	19.25	20.75	22.50	24.25	26.25	27.25
225-230	5.50	6.25	7.25	9.25	11.25	13.50	15.50	17.50	19.50	21.50	24.25	25.75	27.75	30.00	32.00	34.25
250-256	12.75	15.25	17.50	22.50	27.25	32.50	37.25	43.00	47.75	53.00	57.75	63.00	68.25	73.50	78.75	83.00
300-307	17.50	21.00	24.25	31.50	38.25	45.25	52.50	59.75	67.25	73.50	80.75	88.25	95.50	101.75	109.25	116.50
350-360	23.00	27.75	32.00	41.50	51.00	59.75	69.25	78.75	88.25	97.75	107.00	116.50	126.00	136.50	143.75	154.25
400-408	30.00	35.75	41.50	53.50	65.00	76.75	89.25	100.75	112.25	126.00	136.50	149.00	160.75	173.25	184.75	197.50
450-460	37.25	45.25	51.50	67.25	80.75	95.50	110.25	125.00	139.75	155.50	170.00	184.75	199.50	214.25	229.00	243.50
500-510	56.75	68.25	79.75	103.00	125.00	147.00	169.00	190.00	213.25	236.25	258.25	281.50	303.50	326.50	348.50	371.75
550-561	70.25	83.00	96.50	125.00	151.25	178.50	204.75	232.00	259.25	286.75	314.00	341.25	369.50	395.75	423.25	450.50
600-612	85.00	98.75	115.50	148.00	180.50	212.00	244.75	277.25	310.75	343.25	377.00	408.50	442.00	451.50	483.00	539.75

Note: Prices above and to the right of the 'Thick Black Line' apply to all wheels of all bonds. Prices below and to the left of the 'Thick Black Line' apply to wheels of Resinoid Bond only.

BASIC PRICE FOR MOUNTED WHEELS AND POINTS

Shape No.	Diameter mm	Thickness mm	Spindle Size	Basic Price Rs. P.
A1	19.05	63.5	6	7.50
A2	25.4	31.7	6	4.75
A3	22.23	69.85	6	9.50
A4	31.75	31.75	6	5.00
A5	19.05	28.52	6	4.50
A11	20.64	44.45	6	5.75
A12	17.46	31.75	6	4.50
A13	28.58	28.58	6	5.00
A14	17.46	22.23	6	4.00
A15	6.35	26.99	6	3.75
A21	25.4	25.4	6	4.25
A22	19.05	15.88	6	3.50
A24	9.35	19.05	6	3.00
A25	25.4	25.4	6	4.25
A26	15.88	15.88	6	3.50
A31	24.93	25.4	6	4.50
A32	25.4	15.88	6	3.75
A34	38.1	9.53	6	4.00
A36	41.28	9.53	6	4.50
A37	31.75	6.35	6	3.50
A38	25.4	63.5	6	4.25
A39	19.05	31.7	6	3.50
B41	15.88	69.85	3&6	3.50
B42	19.05	31.75	3&6	3.25
B43	7.94	28.52	3	2.75
B44	9.53	44.45	3	2.75
B45	7.94	31.75	3	2.75
B51	19.05	28.58	3&6	3.25
B52	19.05	22.23	3&6	3.25
B53	5.88	26.99	3	3.00
B55	6.35	25.4	3	2.75
B61	7.94	15.88	3	3.25
B62	9.53	19.05	3&6	3.00
B63	4.76	25.4	3	2.75
B71	2.38	15.88	3	3.00
B72	3.18	25.4	3	2.75
B73	3.18	15.88	3	2.75
B81	4.76	9.53	3	3.00
B82	6.35	9.53	3	2.75
B83	3.18	6.35	3	2.75
B91	12.7	15.88	3&6	3.25
B92	6.35	6.35	3	2.75
B93	4.76	4.76	3	2.75
B95	3.18	4.76	3	2.75
B96	3.18	6.35	3	2.75
B97	3.18	9.53	3	2.75
B98	2.38	6.35	3	2.75
B103	15.88	4.76	3&6	3.00
B104	7.94	9.53	3	3.00
B106	3.18	2.78	3	2.75
B111	11.11	17.46	3&6	3.25
B112	9.53	12.7	3	3.00
B113	6.35	6.35	3	2.75
B121	12.7	12.7	3&6	3.00
B122	9.53	9.53	3	3.00
B123	4.76	4.76	3	2.75
B131	12.7	12.7	3&6	3.00
B132	9.53	12.7	3&6	3.00
B134	7.94	9.54	3&6	3.00
B135	6.35	12.7	3&6	2.75
B136	6.35	7.94	3&6	2.75

Shape No.	Diameter mm	Thickness mm	Spindle Size	Basic Price Rs. P.
W144	3.18	6.35	3	2.00
W145	3.18	9.53	3	2.00
W146	3.18	12.7	3	2.00
W150	4.76	1.59	3	2.00
W151	4.76	3.18	3	2.00
W152	4.76	6.35	3	2.00
W153	4.76	9.35	3	2.00
W154	4.76	12.7	3	2.00
W155	4.76	15.88	3	2.00
W157	6.35	1.59	3	2.00
W158	6.35	3.18	3	2.00
W159	6.35	4.76	3&6	2.00
W160	6.35	6.35	3&6	2.00
W162	6.35	9.53	3&6	2.00
W163	6.35	12.7	3&6	2.00
W164	6.35	19.05	3	2.25
W167	7.94	6.35	3&6	2.00
W170	7.94	12.7	3&6	2.25
W172	9.53	1.59	3	2.00
W173	9.53	3.18	3	2.00
W174	9.53	6.35	3&6	2.00
W175	9.53	9.53	3&6	2.25
W176	9.53	12.7	3&6	2.25
W177	9.53	19.05	3&6	2.75
W178	9.53	25.4	3&6	3.00
W179	9.53	31.75	6	3.60
W182	12.7	3.18	6	2.00
W183	12.7	6.35	3&6	2.00
W184	12.7	9.53	3&6	2.25
W185	12.7	12.7	3&6	2.25
W186	12.7	19.05	3&6	2.75
W187	12.7	25.4	3&6	3.00
W188	12.7	38.1	6	3.75
W191	15.88	3.18	3&6	2.25
W192	15.88	6.35	3&6	2.25
W195	15.88	19.05	3&6	3.00
W196	15.88	25.4	6	3.25
W197	15.88	50.8	6	5.25
W199	19.05	1.59	3&6	2.25
W200	19.05	3.18	3&6	2.25
W201	19.05	3.18	3&6	2.25
W205	19.05	25.4	6	3.25
W208	19.05	50.8	6	5.25
W211	22.2	3.18	3&6	2.75
W215	25.4	3.18	3&6	2.75
W216	25.4	6.35	3&6	2.75
W219	25.4	6.35	3&6	2.75
W220	25.4	25.4	6	3.75
W225	31.75	6.35	6	3.75
W226	31.75	9.53	6	3.25
W227	31.75	12.7	6	3.25
W235	40		6	4.25

BASIC PRICE FOR 'F' TYPE DISC WHEELS

THICKNESS OF USEABLE ABRASIVE

Diameter	19-20	25-27	37-40	50-53	61-65	73-80
mm	Rs. P.	Rs. P.	Rs. P.	Rs. P.	Rs. P.	Rs. P.
150-155	18.00	20.00	24.25	29.25	34.00	38.50
175-180	22.00	25.25	30.75	38.00	44.50	51.25
200-205	27.50	31.25	39.00	47.75	56.75	65.00
225-230	33.50	38.00	48.50	59.50	70.50	81.50
250-256	40.25	46.25	58.75	71.50	84.75	98.00
300-307	55.00	63.75	82.50	100.00	118.75	137.50
350-360	72.50	84.75	109.00	133.00	157.25	181.50
400-408	93.50	109.00	139.75	170.50	201.25	233.25
450-460	116.50	135.25	175.00	212.25	250.75	289.25
500-510	143.00	166.00	214.00	261.75	308.00	354.25
550-561	172.75	201.25	260.25	316.75	373.30	429.00
600-612	205.75	241.00	310.75	378.50	445.50	512.50
655-665	242.00	282.75	366.25	446.50	525.75	605.00
700-715	282.75	330.00	426.75	521.50	615.00	709.50
755-770	327.75	361.75	494.00	604.00	711.75	819.50
805-820	377.25	448.75	568.75	694.00	817.25	940.50
905-920	492.25	575.25	376.00	894.25	1050.50	1204.50
1010-1025		723.75	924.00	1102.25	1317.75	1509.25

Hole allowance is applicable on F-type disc wheels having holes 150 mm or more in diameter.
Intermediate sizes take list price of the next larger dia or thickness.

HOLE ALLOWANCE FOR 'F' TYPE DISC WHEELS

THICKNESS OF USEABLE ABRASIVE

Diameter	19-20	25-27	37-40	50-53	61-65	73-80
mm	Rs. P.	Rs. P.	Rs. P.	Rs. P.	Rs. P.	Rs. P.
150-155	3.50	4.25	5.00	5.75	7.00	7.75
175-180	4.50	5.00	6.00	7.75	8.75	10.25
200-205	5.50	6.25	7.75	9.75	11.25	13.00
225-230	6.50	7.75	9.75	11.75	14.00	16.25
250-256	16.00	16.50	23.75	28.50	34.00	39.00
300-307	22.00	25.25	33.00	40.25	47.25	55.00
350-360	29.26	33.50	43.50	53.25	62.75	72.50
400-408	37.50	43.50	56.00	68.25	80.25	93.50
450-460	47.25	54.00	70.50	84.75	100.00	115.50
500-510	71.50	83.50	107.75	131.00	154.00	177.00
550-561	87.00	101.25	131.00	158.50	187.50	214.00
600-612	103.50	121.00	155.00	189.25	222.25	256.25

F-Type wheels above 90 mm thickness will be priced 1/6th more than 80 mm thickness for every additional 13 mm thickness rounded off to the nearest 25 p.

Example : Price of 600 mm x 90 mm F-Type Wheel	Rs.	512.50
Price of 600 mm x 100 mm F-Type Wheel	Rs.	512.50
	+	Rs. 85.50
		Rs. 598.00
Price of 600 mm x 110 mm F-Type Wheel	Rs.	512.50
	+	Rs. 171.00
		Rs. 683.50

Thickness of usable abrasive is determined by reducing the total thickness by 15 mm.
The above prices will be in steps of 13 mm thickness and in between thickness will take the price of next higher thick wheel.

List Price Schedule for Specialities

List No.	Size	Product	Specification	LP
				Rs.
500	13 x 25 x 100	Combination Stone	37C Fine/Coarse	8.00
112	16 x 45 x 100	Combination Stone	37C Fine/Coarse	8.25
111	20 x 50 x 125	Combination Stone	37C Fine/Coarse	10.75
113	13 x 40 x 150	Combination Stone	37C Fine/Coarse	10.25
147	6 x 25 x 100	Sharpening Stone	37C Coarse	4.50
146	6 x 25 x 100	Sharpening Stone	37C Medium	4.50
145	6 x 25 x 100	Sharpening Stone	37C Fine	4.50
132	13 x 40 x 150	Sharpening Stone	37C Coarse	8.00
131	13 x 40 x 150	Sharpening Stone	37C Medium	8.00
130	13 x 40 x 150	Sharpening Stone	37C Fine	8.00
123	25 x 50 x 150	Sharpening Stone	37C Coarse	10.25
122	25 x 50 x 150	Sharpening Stone	37C Medium	10.25
121	25 x 50 x 150	Sharpening Stone	37C Fine	10.25
117	25 x 50 x 200	Sharpening Stone	37C Coarse	14.75
116	25 x 50 x 200	Sharpening Stone	37C Medium	14.75
115	25 x 50 x 200	Sharpening Stone	37C Fine	14.75
156	25 x 50 x 200	Sharpening Stone	37C Extra Fine	17.50
149	10 x 23 x 76	Pocket Stone	37C Fine	2.75
39	13 x 25 x 100	Hand Stone	37C Coarse	5.25
38	13 x 25 x 100	Hand Stone	37C Medium	5.25
37	13 x 25 x 100	Hand Stone	37C Fine	5.25
189	5/11 x 25 x 100	Slip Stone	37C Coarse	5.50
187	5/11 x 25 x 100	Slip Stone	37C Medium	5.50
186	5/11 x 25 x 100	Slip Stone	37C Fine	5.50
179	1.6/6 x 45 x 114	Slip Stone	37C Coarse	6.25
178	1.6/6 x 45 x 114	Slip Stone	37C Medium	6.25
177	1.6/6 x 45 x 114	Slip Stone	37C Fine	6.25
185	5/13 x 45 x 114	Slip Stone	37C Coarse	6.25
184	5/13 x 45 x 114	Slip Stone	37C Medium	6.25
183	5/13 x 45 x 114	Slip Stone	37C Fine	6.25
182	8/16 x 54 x 114	Slip Stone	37C Coarse	8.75
181	8/16 x 54 x 114	Slip Stone	37C Medium	8.75
180	8/16 x 54 x 114	Slip Stone	37C Fine	8.75
176	10/20 x 57 x 150	Slip Stone	37C Coarse	11.00
175	10/20 x 57 x 150	Slip Stone	37C Medium	11.00
174	10/20 x 57 x 150	Slip Stone	37C Fine	11.00
198	234.9 Flat Tapered	Scythe Stone		4.50
203	304.8 Long Tapered	Scythe Stone		8.25
ST814	50.8 x 76.2 x 80.96	Tile Polishing Blocks		7.75



List Price Schedule for Rubbing Bricks

List No.	Size	LP
		Rs.
224	13 x 50 x 100	3.00
552	25 x 25 x 100	3.00
223	25 x 50 x 100	4.00
222	50 x 50 x 100	7.25
	10 x 80 x 150	7.75
553	13 x 13 x 150	3.50
555	20 x 20 x 150	3.50
556	25 x 25 x 150	3.50
215	25 x 50 x 150	5.75
214	50 x 50 x 150	10.25
205	50 x 75 x 150	14.75
557	20 x 20 x 200	5.75
558	25 x 25 x 200	6.00
212	25 x 50 x 200	7.25
211	50 x 50 x 200	13.25
285	50 x 50 x 200	15.75
206	50 x 75 x 200	19.50
	66 x 76 x 200	25.95
	16 x 38 x 203	9.00

List Price Schedule for Roll Scouring Blocks

List No.	Size	LP
		Rs.
248	63.5 x 50.8 / 57.15 x 100 Corners 53.98 Radius	9.75
240	63.5 x 139.7 / 149.23 x 100	22.25
243	66.68 x 133.35 / 152.4 x 100	23.75
269	50.8 x 50.8 / 63.5 x 125	8.75
252	50.8 x 50.8 / 76.2 x 125 Corners 50.8 Radius	10.50
82	50.8 x 50.8 / 63.5 x 125 Top 50.8 Radius	8.75
257	63.5 x 63.5 / 82.5 x 125 Corners 38.1 Radius	14.75
263	63.5 x 63.5 / x 125 Corners 9.53 Radius	13.25
245	63.5 x 50.8 / 63.5 x 125	12.00
250	66.68 x 53.98 / 66.68 x 125 Corners 31.75 Radius	13.25
255	69.85 x 60.33 / 76.2 x 125 Corners 76.2 Radius	15.00
272	82.55 x 63.5 / 82.55 x 125 Corners 50.8 Radius	19.00
247	38.1 x 50.8 / 66.68 x 133	8.75
258	69.85 x 63.5 / 76.2 x 133 Corners 76.2 Radius	16.25
242	47.63 x 57.15 / 69.85 x 140 Corners 15.88 Radius	11.00
246	50.8 x 50.8 / 63.5 x 140	10.50
259	60.33 x 53.98 / 60.33 x 150 Corners 34.93 Radius	13.50
264	76.2 x 114.3 / x 150 Corners 9.53 Radius	31.50
260	88.9 x 63.5 / 95.25 x 150 Corners 32.54 Radius	26.00
80	101.6 x 76.2 / x 241 Top 101.6 Radius	46.75

List Price Schedule for Dressing Sticks

Size	LP
	Rs.
13 x 13 x 100	4.20
13 x 25 x 100	4.80
20 x 20 x 100	4.80
25 x 50 x 100	12.30
50 x 50 x 100	14.00
25 x 25 x 150	4.20
25 x Round x 150	4.20
50 x 50 x 150	16.80
20 x Half Round x 200	6.90
25 x 25 x 200	7.20
20 x Half Round x 230	7.80

List Price Schedule for Honing Sticks

The List Prices are for 10mm or Less Thick Honing Sticks. For Over 10mm Thick Honing Sticks, Surcharges as indicated below will be applicable.

Width											
Length mm	4	8	10	13	20	25	32	40	45	50	
25	1.60	1.75	1.90	2.00	2.50	3.00	—	—	—	—	
50	2.00	2.25	2.40	2.50	3.00	3.50	4.25	5.00	5.75	6.50	
80	2.25	2.75	2.85	3.00	3.50	4.00	5.00	5.75	6.75	7.50	
100	2.75	3.00	3.35	3.50	4.25	5.00	5.75	6.75	7.75	8.75	
125	3.25	3.75	4.05	4.25	5.00	5.75	6.75	8.00	9.00	10.00	
150	4.00	4.50	4.75	5.00	5.75	6.75	7.75	9.00	10.25	11.25	
180	4.75	5.25	5.50	5.75	6.50	7.50	8.75	10.00	11.50	12.50	
200	5.50	6.00	6.20	6.50	7.25	8.25	10.00	11.00	13.00	13.75	

Thickness mm	13	16	19	22	25
Surcharge %	25	50	75	100	125

Honing Sticks above 200 mm length will be rounded off to the nearest 25mm and are priced in proportion of 100 mm length Honing Sticks. For Honing Sticks above 400 grit, refer Super Finishing Sticks.

List Price Schedule for Honing Sticks

Th x L	SQUARE		TRIANGLE		HALF ROUND		ROUND	
	List No.	LP Rs.	List No.	LP Rs.	List No.	LP Rs.	List No.	LP Rs.
6 x 100	501	4.20	512	5.40	523	5.40	534	6.60
8 x 100	502	4.20	513	5.40	524	5.40	535	6.60
10 x 100	503	4.20	514	5.40	525	5.40	536	6.60
13 x 100	504	4.20	515	5.40	526	5.40	537	6.60
25 x 100		4.20		5.40		5.40		6.60
6 x 150	506	6.60	517	7.20	528	7.20	539	8.10
10 x 150	507	6.60	518	7.20	529	7.20	540	8.10
13 x 150	508	6.60	519	7.20	530	7.20	541	8.10
16 x 150	509	6.90	520	8.40	531	8.40	542	9.30
20 x 150	510	6.90	521	8.40	532	8.40	543	9.30
25 x 150	511	7.20	522	9.00	533	9.00	544	9.60

Note: Finish Sticks are available only in 37C abrasives. All other will be under Honing Sticks.

Basic Price for Standard Type Segments

	Dimensions in mm					
MACHINE MAKER	Length	Width	Width	Thickness	Sketch No.	Basic Price
						Rs.
DISKUS	50	115	100	40	S001	8.50
DISKUS	60	115	100	41	S002	11.50
HANCHETT	103.19	117.48	115.89	63.5	S003	22.75
BLUMBERG	117.08	178.99	148.04	60.33	S004	31.95
GUSTI	120	46	60	22	S005	6.50
COULTER MCKENZIE	127	140.49	107.95	31.75	S006	18.75
	Radial					
LUKE & SPENCER	127	64.29	79.38	31.75	S007	11.50
W.M.W.	140	74	39	28	S008	10.00
CAMUT	140	79	70	20	S009	9.25
JOTES	60	115	100	35	S010	16.00
TOS & W.M.W.	150	90	90	35	RECT	16.25
TOS	150	80	80	25	RECT	11.50
TOS	150	90	90	35	S011	15.50
CHURCHILL & JOHN LUND	152.4	84.14	103.19	38.1	S012	17.50
LUMSDEN	152.4	117.84	79.38	44.45	S013	20.50
BLANCHARD	152.4	179.39	179.39	55.56	S014	32.75
BLANCHARD	152.4		285.75	57.15	S015	48.00
MATTISON	152.4	104.78	114.3	38.1	S016	20.50
	Radial					
	160	120	120	40	RECT	21.50
LUMSDEN	190.5	117.48	79.38	44.45	S017	22.50
PRAEHOMA	200	140	100	38	S018	27.75
SNOW	203.2	88.11	117.48	44.45	S019	28.50
LUMSDEN	228.6	165.1	114.3	57.15	S020	46.25
SNOW	228.6	152.4	84.14	76.2	S021	50.00
SNOW	254	106.36	85.73	44.45	S022	32.00
SOW	304.8	222.25	153.99	76.2	S023	95.50

For items of segments not covered by the above price list, please refer to us.

Cork Pads and inserts Nuts, where applicable, will be extra Rs. 2.75 and Rs. 3.00 each respectively.

BASIC PRICE FOR FINISHED STICKS

AVAILABLE IN GRITS : FINE, MEDIUM AND COARSE

Thick-ness	Length	Square		Triangular		Halfround		Round	
		List No.	Basic Price	List No.	Basic Price	List No.	Basic Price	List No.	Basic Price
			Rs.		Rs.		Rs.		Rs.
6	100	FV01	4.20	FD12	5.40	FHR23	5.40	FHR34	6.60
8	100	FV02	4.20	FD13	5.40	FHR24	5.40	FHR35	6.60
10	100	FV03	4.20	FD14	5.40	FHR25	5.40	FHR36	6.60
13	100	FV04	4.20	FD15	5.40	FHR26	5.40	FHR37	6.60
6	150	FV06	6.60	FD17	7.20	FHR28	7.20	FHR39	8.10
10	150	FV07	6.60	FD18	7.20	FHR29	7.20	FHR40	8.10
13	150	FV08	6.60	FD19	7.20	FHR30	7.20	FHR41	8.10
15	150	FV09	6.90	FD20	8.40	FHR31	8.40	FHR42	9.30
20	150	FV10	6.90	FD21	8.40	FHR32	8.40	FHR43	9.30
25	150	FV11	7.20	FD22	9.00	FHR33	9.00	FHR44	9.60

BASIC PRICE FOR RUBBING BRICKS AND STICKS

List No.	Size mm	Basic Price
		Rs. P.
RG05	152.4 x 76.2 x x x 50.8	14.75
RG06	203.2 x 76.2 x 50.8	19.50
RG11	203.2 x 50.8 x 50.8	13.25
RG12	203.2 x 50.8 x 25.4	7.25
RG14	152.4 x 50.8 x 50.8	10.25
RG15	101.6 x 50.8 x 25.4	5.75
RG23	101.6 x 50.8 x 25.4	4.00
RG24	101.6 x 50.8 x 12.7	3.00
RG26	101.6 x 25.4 x 12.7	2.50
RG85	203.6 x 50.8 x 50.8 Fluted	15.75

Basic Price for Unmounted Honing Stones

Width mm	Length mm							
	25-31	35-55	56-80	81-105	106-130	131-156	157-180	181-200
	Rs. P.	Rs. P.	Rs. P.	Rs. P.	Rs. P.	Rs. P.	Rs. P.	Rs. P.
15	2.00	2.50	3.00	3.50	4.25	5.00	5.75	6.00
20	2.50	3.00	3.50	4.25	5.00	5.75	6.50	7.25
25	3.00	3.50	4.00	5.00	5.75	6.75	7.50	8.25
32	-	4.25	5.00	5.75	6.75	7.75	8.75	10.00
40	-	5.00	5.75	6.75	8.00	9.00	10.00	11.00
45	-	5.75	6.75	7.75	9.00	10.25	11.50	13.00
50	-	6.50	7.50	8.75	10.00	11.25	12.50	13.75

- 1 Basic price mentioned in the table are applicable for 10mm thickness or less. Price will be increased by 25% for every 3 mm (or fraction) increase in the thickness.
- 2 Intermediate size take next higher basic prices.
- 3 A charge of Rs. 0.50 nett per stone will be made for mounting stones to customer's gaiters irrespective of size of stone.
- 4 Honing stones above 200 mm long will be rounded off to the nearest 25 mm and are priced in proportion of 100 mm long Honing Stones.
- 5 For Honing Stones with a width larger than 50mm the basic price is to be calculated by adding 5% for every 5mm increase or part thereof. e.g. 63mm $[50 + (3 \times 5) = 15\%]$.

MULTIPLIER FOR SUPERFINISHING STONES

GRIT	LENGTH UPTO 130 MM	LENGTH ABOVE 130 MM
600	10.50	11.00
800	12.22	12.78
1000	14.50	13.77
1200	17.46	16.58



SCHEDULE OF SURCHARGES

The Surcharges given below are to be added on to the list prices before applying the multipliers.

1	Grit	
	Grit 100 - 150	10%
	180 - 220	35%
	240 - 280	80%
	320 - 400	120%
2	Type	
	T - 12 & T - 13	25%
	T - 6 & T - 11	15%
3	Face	
	Face	10%
	C Face	15%
4	Shape	
	For all diameter	35%
5	Speed	
	33 TO 45 MPS	10%
	46 TO 60 MPS	25%
	61 TO 80 MPS	50%
6	Treatment	
	Wax	10%
	Sulphur	20%
	Wire winding	10%
7	Dimension	
	Above 205mm thick	10%
	Super Balance	10%
	Lead bushing	10%
	Staggered joint	25%
	Spl dimension tol	20%
	Cementing	10%
8	Grain	
	Brown + White ALO	25%

Multiplier Schedule for Non-Standard Bonded Abrasive Products (Exclusive of Excise Duty)

		Ist Column				IInd Column				IIIrd Column			
No.	Product Category	10A	89A	IC	C	10A	89A	IC	C	10A	89A	IC	C
	VITRIFIED BOND												
	Grinding Wheels												
1	Under 100 mm	18.22	23.89	32.66	38.37	15.03	20.38	27.28	33.25	14.32	18.66	25.64	31.38
2	100 to 205 mm	22.10	31.69	39.17	49.19	18.40	26.93	33.18	43.53	17.21	25.08	30.86	40.79
3	Over 205 to 307 mm	23.95	43.36	46.35	62.39	21.91	40.59	43.52	59.05	20.64	37.73	40.53	53.56
4	Over 307 to 510 mm	33.10	49.79	56.49	71.59	31.03	46.05	52.25	67.64	28.59	43.06	49.04	61.48
5	Over 510 to 765 mm	43.96	60.48	66.79	82.70	40.51	57.61	62.89	76.86	38.15	52.32	58.33	71.86
6	Over 765 to 1070 mm	48.20	65.67	73.18	90.00	44.55	61.25	69.10	83.91	41.58	56.87	63.06	78.15
7	Segments	19.81	26.89	27.52	32.97	18.19	24.79	25.02	29.96	17.45	23.61	23.43	28.08
	Mounted Points												
8	A Shape	12.65	11.79	12.88	14.96	11.60	10.80	12.01	13.71	10.93	10.06	11.19	12.97
9	B, W & Special	13.13	12.09	13.53	15.93	12.07	11.32	12.60	14.69	11.36	10.55	11.70	13.66
	Honing Sticks												
10	Grit 220 & Coarser	18.30	22.51	23.37	31.41	17.04	20.95	21.94	29.65	16.00	19.37	20.59	27.81
11	Grit 240 to 400	27.30	30.59	32.85	44.45	24.99	28.81	30.57	41.47	23.38	26.77	28.50	38.65
	Specialities												
12	Comb St & Fin St			13.26				12.47				11.68	
13	Sharpening Stones			16.43				15.27				14.17	
	Rubbing Bricks												
14	Grit 100 & Coarser			20.81	27.01			19.32	25.04			18.14	23.55
15	Grit 120 to 220			23.34	30.23			21.71	28.12			20.26	26.28
16	Grit 240 & Finer			27.38	35.13			25.60	32.85			23.91	30.68

		Ist Column				IInd Column				IIIrd Column			
No.	Product Category	10A	89A	IC	C	10A	89A	IC	C	10A	89A	IC	C
	RESINOID BOND												
	Grinding Wheels												
17	Under 100 mm	18.84	25.92	30.94	38.11	16.63	23.01	26.92	33.15	15.62	21.22	24.86	30.61
18	100 to 205 mm	20.52	28.32	34.63	42.65	18.17	25.26	29.72	36.63	16.86	23.08	27.80	34.27
19	Over 205 to 307 mm	27.61	36.73	43.52	53.63	25.95	34.55	40.56	50.00	24.02	31.88	37.63	46.33
20	Over 307 to 510 mm	30.18	40.53	45.47	55.94	28.29	38.16	42.58	52.39	26.24	35.21	39.39	48.47
21	Over 510 to 765 mm	47.47	54.72	67.43	83.06	44.28	51.58	62.96	77.59	41.06	47.58	58.52	72.05
22	Over 765 to 1070 mm	48.04	55.12	68.59	84.54	45.08	52.02	64.30	79.24	41.89	47.92	59.63	73.46
	Resin Bond Control Wheels												
23	205mm Dia & Under	41.57				38.89				36.16			
24	Over 205mm to 307 mm	50.11				45.25				43.42			
	Non-Reinforced Cut-Off Wheels												
25	230mm Dia & Under	12.72		18.26		11.93		17.31		11.09		15.89	
26	Over 230 mm	18.59		25.46		16.85		23.59		15.70		21.85	
	Reinforced Cut-Off Wheels												
27	230 mm Dia & Under												
28	Over 230 mm	21.55		30.22		20.24		28.15		18.98		25.90	
	Nut Inserted Wheels												
29	510mm Dia & Under	42.91	44.99	61.40	76.81	39.79	42.37	57.06	71.45	37.46	39.02	53.53	66.98
30	Over 510mm	50.70	53.50	72.63	89.16	46.95	50.34	67.55	84.57	43.82	46.52	61.97	77.49
	RUBBER BOND												
31	Control Wheels	69.04				62.23				59.67			
32	Segments	19.93	21.89	26.29	31.54	18.50	20.06	24.43	29.32	17.36	19.20	23.12	27.70

x Applicable for Unfinished Sticks, Wheel Dressing Sticks and Roll Scouring Blocks also.

10A / A - Brown Aluminium Oxide IC - Black Silicon Carbide
89A - White Aluminium Oxide C - Green Silicon Carbide

For 50A Grain, 10A Multiplier with surcharge will be applicable.

88A & 90A Multiplier = 1.1 x 89A Multiplier.

x x (Note: All rates are inclusive of freight).



QUANTITY SCHEDULE

GRINDING WHEELS (Other then Rubber Control & Rubber Wheels)

THICKNESS										
Diameter	Upto 24	25-39	40-49	50-62	63-79	80-90	100-149	150-199	200 & Above	Minimum Value/Lot
Upto 62	100	75	50	40	25	20				3500
63 - 99	65	50	30	25	15	12				5000
100 - 149	80	80	50	40	25	20				6000
150 - 199	60	60	40	30	20	16	12			6500
200 - 249	45	38	30	23	12	9	8			5250
250 - 299	23	23	19	15	9	8	6			5625
300 - 349	23	19	15	11	8	6	5			6750
350 - 399	10	10	8	6	6	5	3	3		10000
400 - 449	8	8	6	6	6	5	3	3	2	12000
450 - 499	6	6	5	4	4	4	2	2	1	13000
500 - 599	5	5	4	4	3	2	2	1	1	15000
600 - 699	3	3	3	2	2	2	1	1	1	16000
700 - 749		2	2	2	2	2	1	1	1	18000
750 - 799		2	2	2	2	1	1	1	1	18000
800 & above		1	1	1	1	1	1	1	1	..

Notes: 1 Column Ist quantity - As per quantity table.
 2 Column IInd quantity - Two times of column Ist quantity
 3 Column IIIrd quantity - Three times of column Ist quantity

Rubber wheels	THICKNESS IN mm						or Minimum
Diameter in mm	25	50	80	100	150	200	Value/lot
<= 230	10	6	4	3	2		6000
231 - 350	6	4	3	2	2	1	6000
351 & above	4	3	2	2	1	1	8000

Thin Wheels	DCD's		Cutting Off Wheels (In mm)				
Diameter in mm	<= 125	180 - 230	<= 125	150 - 230	250 - 350	351 - 400	401 & above
QUANTITY	1000	500	300	200	100	60	40
or Min.Value/lot	20000	50000	10000	15000	15000	20000	20000

Specialties	QTY	Min.Value/lot
Segments		
Upto 140 mm long	80	6500
150 mm & Above	40	6500
Sticks	120	5000
Mounted Points		
A Shape	150	5000
B & W Shape	250	4000

Notes

1. For reduction of bore, Plastic Bushes may be used as follows :-

From	To
20	16, 15.88, 12.7, 10, 9.52 mm
31.75	25.4, 25, 22.23, 20, 19.05, 16, 15.88, 12.7, 10, 9.52 mm
50.8	44.45, 38.1, 31.75, 25.4 mm

2. Orders to be in multiples of Unit Pack Quantities only.
3. GST will be applicable on all products, as applicable.
4. The rows highlighted in green colour indicate Factory MTS items.



CP SNAGGING WHEELS

HSN Code: 68042210				
Stock Code	Size	Spec	Unit Price	Std. Pkg.
OR0014	300 x 40 x 31.75	A163R5B912 KANGAROO	1197.70	2
OR0015	300 x 40 x 38.1	A163R5B912 KANGAROO	1197.70	2
OR0043	300 x 40 x 38.1	A16R3B84	1197.70	2
OR0074	300 x 40 x 50.8	IC143S5BC917	2214.70	2
OR0103	350 x 50 x 50.8	IC14-2R4B84	3566.80	2
OR0028	400 x 40 x 38.1	A243S2B912 KANGAROO	2976.40	1
OR0018	400 x 50 x 127	A16R3B84 KANGAROO	2750.10	1
OR0019	400 x 50 x 152.4	10A16R3B84 KANGRAOO	2652.80	1
OR0020	400 x 50 x 152.4	10A16S3B84 KANGAROO	2652.80	1
OR0047	400 x 50 x 38.1	A16R3B84	3288.80	1
OR0021	400 x 50 x 50.8	A16R3B84 KANGAROO	2704.60	1
OR0027	400 x 63 x 152.4	5526A KANGAROO	3245.80	1
OR0022	400 x 65 x 152.4	A16R3B84 KANGRAOO	3245.90	1
OR0111	400 x 65 x 152.4	A16TR108	3245.80	1
OR0082	400 x 65 x 152.4	IC163S5BC917	5668.60	1
OR0029	450 x 40 x 38.1	A243S2B912 KANGAROO	3155.00	1
OR0023	450 x 50 x 152.4	10A16R3B84 KANGRAOO	3535.20	1
OR0108	450 x 50 x 50.8	81101 TR-3 KANGAROO	4042.10	1
OR0032	450 x 50 x 50.8	A163S2+B913 KANGAROO	4042.10	1
OR0044	500 x 75 x 203.2	A16R3B84	5846.70	1

PORTABLE WHEELS

HSN Code: 68042210				
Stock Code	Size	Spec	Unit Price	Std. Pkg.
OR0038	50 x 25 x 15.88	A163R5B912	64.50	150
OR0031	150 x 25 x 15.88	A163R5B912	237.30	8
OR0037	150 x 25 x 15.88	A163R2B913	237.30	8
OR0054	150 x 25 x 15.88	IC16R4B84	394.40	8

ORGANIC SEGMENTS

Wheel Type : SR

HSN Code: 68042210				
Stock Code	Size	Spec	Unit Price	Std. Pkg.
OR0041	150 x 80 x 25	A36N4BOT	184.60	24
OR0050	150 x 80 x 25	89A36J5B84	174.30	24

ORGANIC STRAIGHT CUP WHEEL

Type : 6

HSN Code: 68042210				
Stock Code	Size	Spec	Unit Price	Std. Pkg.
OR0045	400 x 150 x 76.2	A24M4BOT	9950.10	1

ORGANIC TAPERED CUP WHEELS

Type : 11

HSN Code: 68042210				
Stock Code	Size	Spec	Unit Price	Std. Pkg.
OR0096	152.4 x 50.8 x 22.23	A163R2B913	419.40	4
OR0097	152.4 x 50.8 x 22.23	A163R5B912	419.40	4

REINFORCED CUT-OFF WHEELS

HSN Code: 68042210				
Stock Code	Size	Spec	Unit Price	Std. Pkg.
OR0098	500 x 3 x 40	A30RB88A2DF	1101.50	15
OR0100	500 x 5 x 40	A30UM	1101.50	15

OFFHAND WHEELS

Type 01

HSN Code: 68042210				
Stock Code	Size	Spec	Unit Price	Std. Pkg.
OV2007	100 x 13 x 19.05	10A60Q5V17	102.50	50
OV2010	100 x 20 x 19.05	10A24R5V34	113.60	20
OV2012	100 x 20 x 19.05	10A46Q5V17	113.60	20
OV3146	150 x 6 x 31.75	MEDIUM	148.60	24
OV3132	150 x 13 x 31.75	FINE	187.40	14
OV3151	150 x 13 x 31.75	MEDIUM	187.40	14
OV3002	150 x 20 x 31.75	10A24S5V34	203.10	10
OV3041	150 x 20 x 31.75	COARSE	203.10	10
OV3042	150 x 20 x 31.75	MEDIUM	203.10	10
OV3043	150 x 20 x 31.75	FINE	203.10	10
OV3329	150 x 20 x 31.75	IC24S5V93	317.20	10
OV3045	150 x 25 x 31.75	10A24R5V34	241.20	8
OV3046	150 x 25 x 31.75	COARSE	241.20	8
OV3047	150 x 25 x 31.75	MEDIUM	241.20	8
OV3048	150 x 25 x 31.75	FINE	241.20	8
OV3183	200 x 6 x 31.75	MEDIUM	215.70	15
OV3060	200 x 13 x 31.75	MEDIUM	277.10	9
OV3188	200 x 13 x 31.75	COARSE	263.90	9
OV3062	200 x 20 x 31.75	COARSE	313.80	6
OV3064	200 x 20 x 31.75	MEDIUM	313.80	6
OV3008	200 x 25 x 31.75	COARSE	365.30	5
OV3033	200 x 25 x 31.75	MEDIUM	365.30	5
OV3067	200 x 25 x 31.75	10A24R5V34	365.30	5
OV3068	200 x 25 x 31.75	COARSE	365.30	5
OV3069	200 x 25 x 31.75	FINE	365.30	5
OV3298	250 x 13 x 31.75	MEDIUM	445.30	7
OV3073	250 x 25 x 31.75	MEDIUM	624.00	4
OV3074	250 x 25 x 31.75	COARSE	624.00	4
OV3075	250 x 25 x 31.75	10A24R5V34	624.00	4
OV3009	300 x 25 x 25.4	10A24R5V34	894.00	3

HSN Code: 68042210				
Stock Code	Size	Spec	Unit Price	Std. Pkg.
OV3375	300 x 25 x 25.4	10A24R5V34MO	894.00	3
OV3010	300 x 25 x 25.4	CYCLE CRANK	894.00	3
OV3103	300 x 25 x 25.4	COARSE	894.00	3
OV3127	300 x 25 x 25.4	MEDIUM	894.00	3
OV3258	300 x 25 x 25.4	FINE	894.00	3
OV3120	300 x 25 x 31.75	10A24R5V17	856.40	3
OV3121	300 x 25 x 31.75	MEDIUM	856.40	3
OV3214	300 x 25 x 31.75	10A36P5V501	856.40	3
OV3001	300 x 40 x 38.1	10A24R5V34	1221.60	2
OV3034	300 x 40 x 38.1	COARSE	1221.60	2
OV3104	300 x 40 x 38.1	10A24R5V17	1196.40	2
OV3269	300 x 40 x 38.1	10A46Q5V17	1196.40	2
OV3005	300 x 40 x 50.8	10A24R5V34	1196.40	2
OV3123	300 x 40 x 50.8	MEDIUM	1196.40	2
OV3271	300 x 40 x 50.8	10A24T5V34	1196.40	1
OV3080	300 x 50 x 50.8	10A24R5V34	1632.30	1
OV3115	300 x 50 x 50.8	10A24R5V34	1632.30	1
OV3124	300 x 50 x 50.8	10A20Q5V17	1632.30	1
OV3125	300 x 50 x 50.8	10A24R5V17	1632.30	1
OV4061	350 x 25 x 25.4	FINE	1722.10	3
OV4076	350 x 25 x 25.4	COARSE	1722.10	3
OV4016	350 x 40 x 38.1	10A24R5V34	2320.20	2
OV4057	350 x 40 x 38.1	COARSE	2320.20	2
OV4060	350 x 40 x 38.1	10A20-9Q5V17	2320.20	2
OV4026	350 x 50 x 38.1	10A24R5V34	3101.80	2
OV4146	350 x 50 x 50.8	10A24R5V17	3101.80	2
OV4004	400 x 40 x 38.1	10A36T5V34	2913.90	1

OFFHAND WHEELS

Type 01

HSN Code: 68042210				
Stock Code	Size	Spec	Unit Price	Std. Pkg.
OV4009	400 x 40 x 38.1	10A30T5V34	2913.90	1
OV4021	400 x 40 x 38.1	10A30Q5V17	2913.90	1
OV4028	400 x 40 x 38.1	10A24R5V34	2913.90	1
OV4058	400 x 40 x 38.1	MEDIUM	2913.90	1
OV4059	400 x 40 x 38.1	MEDIUM-51	2854.70	1
OV4161	400 x 50 x 38.1	10A24T5V34	4012.10	1
OV4239	400 x 50 x 38.1	IC24R5V91	7188.70	1
OV4010	400 x 50 x 50.8	10A24R5V34	4012.10	1
OV4073	400 x 50 x 50.8	10A24T5V34	4012.10	1
OV4001	450 x 40 x 38.1	10A36T5V34	3205.70	1
OV4023	450 x 40 x 38.1	10A30T5V34	3205.70	1
OV4024	450 x 40 x 38.1	10A46R5V34	3205.70	1
OV4030	450 x 40 x 38.1	10A30Q5V17	3205.70	1
OV3476	450 x 40 x 38.1	10A30 T5 V34MO	3205.70	1
OV3477	450 x 40 x 38.1	10A36 T5 V34MO	3205.70	1
OV3478	450 x 40 x 38.1	10A46 R5 V34MO	3205.70	1
OV4003	450 x 50 x 50.8	10A24R5V34	5252.80	1
OV4240	450 x 50 x 50.8	IC24S5V91	8575.80	1
OV4031	450 x 75 x 50.8	10A20Q5V17	7218.00	1
OV4176	600 x 75 x 203.2	IC24S5V93	24036.20	1

TOOLROOM WHEELS

Type 01

HSN Code: 68042210				
Stock Code	Size	Spec	Unit Price	Std. Pkg.
OV3038	150 x 6 x 31.75	89A46/54K5V41	211.50	24
OV3343	150 x 6 x 31.75	89A60K5V41	211.50	24
OV3039	150 x 6 x 31.75	89A120K5V41	211.50	24
OV3243	150 x 6 x 31.75	90A60K6V31	217.50	24
OV3040	150 x 13 x 31.75	89A46/54K5V41	251.50	14
OV3129	150 x 13 x 31.75	89A60K5V41	251.50	14
OV3244	150 x 13 x 31.75	90A46/54K6V31	258.70	14
OV3245	150 x 13 x 31.75	90A60K6V31	258.70	14
OV3126	150 x 13 x 51	89A46/54K5V41	253.90	14
OV3412	150 x 13 x 31.75	89A46/45 J+5 V41	251.50	14
OV3413	150 x 13 x 31.75	89A60-2 J5 V41	251.50	14
OV3130	150 x 20 x 31.75	89A46/54K5V41	285.80	10
OV3131	150 x 20 x 31.75	89A60K5V41	285.80	10
OV3414	150 x 20 x 31.75	89A60-2 J5 V41	283.60	10
OV3416	180 x 13 x 31.75	89A46/45 J+5 V41	283.60	14
OV3417	180 x 13 x 31.75	89A60-2 J5 V41	283.60	14
OV3053	180 x 13 x 31.75	89A46/54K5V41	283.60	14
OV3054	180 x 13 x 31.75	89A60K5V41	283.60	14
OV3246	180 x 13 x 31.75	90A46/54K6V31	291.90	14
OV3247	180 x 13 x 31.75	90A60K6V31	291.90	14
OV3035	200 x 6 x 31.75	89A60K5V41	280.50	15
OV3036	200 x 6 x 31.75	89A80K5V41	280.50	15
OV3056	200 x 6 x 31.75	89A120K5V41	280.50	15
OV3057	200 x 6 x 31.75	89A46/54K5V41	280.50	15
OV3184	200 x 10 x 31.75	89A46/54K5V41	336.20	12
OV3185	200 x 10 x 31.75	89A60K5V41	336.20	12
OV3004	200 x 13 x 31.75	89A46/54K5V41	346.20	9
OV3418	200 x 13 x 31.75	89A60-2 J5 V41	346.20	9
OV3419	200 x 13 x 31.75	89A46/45 J+5 V41	346.20	9
OV3058	200 x 13 x 31.75	89A60K5V41	346.20	9
OV3059	200 x 13 x 31.75	10A60K5V22	283.70	9
OV3089	200 x 13 x 31.75	88A46/54K6V31	356.10	9
OV3248	200 x 13 x 31.75	90A46/54K6V31	356.10	9
OV3249	200 x 13 x 31.75	90A60K6V31	356.10	9
OV3003	200 x 20 x 31.75	89A46/54K5V41	437.60	6
OV3082	200 x 20 x 31.75	89A60K5V41	437.60	6
OV3420	200 x 20 x 31.75	89A46/45 J+5 V41	437.60	6
OV3422	200 x 20 x 31.75	89A60-2 J5 V41	450.00	6

HSN Code: 68042210				
Stock Code	Size	Spec	Unit Price	Std. Pkg.
OV3090	200 x 20 x 31.75	88A46/54K6V31	450.00	6
OV3250	200 x 20 x 31.75	90A46/54K6V31	450.30	6
OV3251	200 x 20 x 31.75	90A60K6V31	450.30	6
OV3196	200 x 20 x 50.8	89A46/54K5V41	437.60	6
OV3197	200 x 20 x 50.8	89A60K5V41	437.60	6
OV3423	200 x 20 x 50.8	89A46/45 J+5 V41	437.60	6
OV3424	200 x 20 x 50.8	89A60-2 J5 V41	437.60	6
OV3421	200 x 25 x 31.75	89A46/45 J+5 V41	511.20	5
OV3425	200 x 25 x 31.75	89A60-2 J5 V41	511.20	5
OV3013	200 x 25 x 31.75	89A46/54K5V41	511.20	5
OV3014	200 x 25 x 31.75	89A60K5V41	511.20	5
OV3091	200 x 25 x 31.75	88A46/54K6V31	525.70	5
OV3217	250 x 6 x 31.75	89A60K5V41	600.80	10
OV3220	250 x 10 x 31.75	89A60K5V41	698.90	8
OV3016	250 x 13 x 31.75	89A46/54K5V41	779.00	7
OV3017	250 x 13 x 31.75	89A60K5V41	775.10	7
OV3224	250 x 20 x 31.75	89A46/54K5V41	1008.40	5
OV3426	250 x 20 x 76.2	89A60-2 J5 V41	1028.90	5
OV3330	250 x 20 x 76.2	89A46/54K5V41	1008.40	5
OV3227	250 x 20 x 76.2	89A60K5V41	1008.40	5
OV3076	250 x 25 x 76.2	89A46/54K5V41	1146.00	4
OV3077	250 x 25 x 76.2	89A60K5V41	1146.00	4
OV3427	250 x 25 x 76.2	89A46/45 J+5 V41	1146.00	4
OV3428	250 x 25 x 76.2	89A60-2 J5 V41	1146.00	4
OV3237	250 x 25 x 76.2	10A46/54K5V22	668.60	4
OV3238	250 x 25 x 76.2	10A60K5V22	649.00	4
OV3253	250 x 25 x 76.2	90A46/54K6V31	1144.40	4

SURFACE GRINDING WHEELS

Type 01

HSN Code: 68042210				
Stock Code	Size	Spec	Unit Price	Std. Pkg.
OV3285	300 x 50 x 76.2	89A46/54K5V41	2683.80	1
OV3286	300 x 50 x 76.2	89A60K5V41	2683.80	1



VITRIFIED STRAIGHT CUP WHEELS

Type 06

HSN Code: 68042210				
Stock Code	Size	Spec	Unit Price	Std. Pkg.
OV3011	100 x 50 x 31.75	89A46/54KV41	365.10	12
OV3019	100 x 50 x 31.75	89A46/54K5V41	365.10	12
OV3140	100 x 50 x 31.75	10A46/54K5V22	246.30	12
OV3141	100 x 50 x 31.75	89A60K5V41	365.10	12
OV3305	100 x 50 x 31.75	90A46/54K6V31	375.40	12
OV3012	125 x 100 x 31.75	89A46/54K5V41	813.10	4
OV3159	125 x 100 x 31.75	10A46/54K5V22	570.50	4
OV3138	150 x 100 x 31.75	89A46/54K5V41	1143.60	2
OV3139	150 x 100 x 31.75	10A46/54K5V22	773.00	2
OV3015	200 x 100 x 31.75	89A46/54K5V41	1740.60	1
OV3021	200 x 100 x 31.75	IC36J5V93	2098.60	1
OV3133	200 x 100 x 31.75	IC36K5V93	2098.60	1
OV3137	200 x 100 x 31.75	10A46/54K5V22	1118.30	1
OV3313	200 x 100 x 31.75	IC24J5V93	2098.60	1
OV3345	200 x 100 x 31.75	89A36K5V41	1832.70	1

VITRIFIED TAPERED CUPS

Type 11

HSN Code: 68042210				
Stock Code	Size	Spec	Unit Price	Std. Pkg.
OV2026	100 x 40 x 31.75	89A60K5V41	296.50	12
OV3327	100 x 40 x 31.75	89A60K5V41	293.20	12
OV3160	101.6 x 50.8 x 31.75	89A46/54K5V41	365.20	12
OV2021	101.6 x 50.8 x 31.75	10A46/54K5V22	257.60	12
OV2022	101.6 x 50.8 x 31.75	89A60K5V41	365.20	12
OV2023	101.6 x 50.8 x 31.75	90A46/54K6V31	375.50	12
OV2024	101.6 x 50.8 x 31.75	90A60K6V31	375.50	12

DISH / SAUCER WHEELS

Type 12

HSN Code: 68042210				
Stock Code	Size	Spec	Unit Price	Std. Pkg.
OV3326	152.4 x 12.7 x 31.75	89A60K5V41	314.90	14
OV3344	152.4 x 12.7 x 31.75	89A46/54K5V41	309.00	14

VITRIFIED SEGMENTS

HSN Code: 68042210				
Stock Code	Size	Spec	Unit Price	Std. Pkg.
OV5003	38.1 x 84.14/103.19 x 150 RAD:228.6	89A36J5V401	384.80	8
OV5006	38.1 x 84.14/103.19 x 150 RAD:228.6	89A36L5V401	384.80	8
OV5012	38.1 x 84.14/103.19 x 150 RAD:228.6	89A24J5V401	384.80	8
OV5001	150 x 80 x 25	89A46I5V401	253.20	24
OV5002	150 x 80 x 25	89A36J5V401	253.20	24
OV5008	150 x 80 x 25	89A36I5V401	253.20	24
OV5010	150 x 80 x 25	89A46K5V401	253.20	24
OV5011	150 x 80 x 25	89A46J5V401	253.20	24
OV5004	20 x 70/79 x 140 RAD:160/140	89A46I5V401	213.20	24

TYPE 2 WHEEL

Type 01

HSN Code: 68042210				
Stock Code	Size	Spec	Unit Price	Std. Pkg.
OV4152	350 x 80 x 203.2	10A36K5V22	3792.90	1

CARBIDE GRINDING WHEELS Type 01

HSN Code: 68042210				
Stock Code	Size	Spec	Unit Price	Std. Pkg.
OV3049	150 x 20 x 31.75	CG60K5V93	358.80	10
OV3152	150 x 20 x 31.75	CG60L5V93	358.80	10
OV3050	150 x 25 x 31.75	CG60K5V93	422.60	8
OV3153	150 x 25 x 31.75	CG60L5V93	422.60	8
OV3270	150 x 25 x 31.75	BIT-J+	318.90	8
OV3055	180 x 13 x 31.75	CG60K5V93	347.70	14
OV3117	180 x 20 x 31.75	CG60L5V93	451.30	10
OV3020	200 x 13 x 31.75	CG60K5V93	549.50	9
OV3066	200 x 20 x 31.75	CG60K5V93	507.80	6
OV3156	200 x 20 x 31.75	CG60L5V93	507.80	6
OV3083	200 x 25 x 31.75	CG60L5V93	604.10	5
OV3084	200 x 25 x 31.75	CG80L5V93	604.10	5
OV3106	200 x 25 x 31.75	CG60K5V93	604.10	5
OV3205	200 x 25 x 31.75	CG60K5V93	861.20	5
OV3210	200 x 25 x 31.75	CG100M5V93	604.10	5
OV3211	200 x 25 x 31.75	CG120K5V93	604.10	5
OV3085	250 x 25 x 31.75	CG60L5V93	1187.00	4
OV3086	250 x 25 x 31.75	CG80L5V93	1187.00	4
OV3109	250 x 25 x 31.75	CG60K5V93	1187.00	4
OV3119	250 x 25 x 31.75	CG60L5V93	1187.00	4
OV3087	300 x 25 x 25.4	CG60L5V93	1653.80	3
OV3088	300 x 25 x 25.4	CG80L5V93	1653.80	3
OV3257	300 x 25 x 25.4	CG60K5V93	1653.80	3
OV3158	300 x 25 x 31.75	CG80L5V93	1653.80	3

SAW GUMMING WHEELS Type 01

HSN Code: 68042210				
Stock Code	Size	Spec	Unit Price	Std. Pkg.
OV3094	150 x 6 x 31.75	10A80Q5V51 C.F.	175.20	24
OV3095	150 x 8 x 31.75	10A80Q5V51 C.F.	190.20	20
OV3096	150 x 10 x 31.75	10A80Q5V51 C.F.	190.20	17
OV3097	200 x 6 x 31.75	10A80Q5V51 C.F.	239.80	15
OV3098	200 x 8 x 31.75	10A80Q5V51 C.F.	282.60	12
OV3099	200 x 10 x 31.75	10A80Q5V51 C.F.	282.60	12
OV3100	250 x 10 x 31.75	10A80Q5V51 C.F.	463.40	8
OV3320	300 x 10 x 31.75	10A80Q5V51	598.70	6



CYLINDRICAL GRINDING WHEELS

Type 01

HSN Code: 68042210				
Stock Code	Size	Spec	Unit Price	Std. Pkg.
OV3144	300 x 25 x 76.2	10A60L5V22	819.00	3
OV3348	300 x 25 x 76.2	10A60N5V22	819.00	3
OV3349	300 x 25 x 127	10A60K5V22	822.30	3
OV3078	300 x 25 x 127	10A60L5V22	893.10	3
OV3350	300 x 25 x 127	10A60N5V22	822.30	3
OV3351	300 x 40 x 127	10A46-3L5V22	1134.80	2
OV4019	350 x 25 x 127	10A60L5V22	1617.40	3
OV4020	350 x 25 x 127	10A60N5V22	1617.40	3
OV4126	350 x 25 x 127	10A60L5V22C	1617.40	3
OV4251	350 x 25 x 127	10A60N5V22C	1617.40	3
OV4252	350 x 40 x 127	10A46-3L5V22	2179.10	2
OV4071	350 x 40 x 127	10A60L5V22	2262.00	2
OV4253	350 x 40 x 127	10A60-1N5V22C	2179.10	2
OV4055	350 x 50 x 127	10A60L5V22	2913.50	2
OV4017	350 x 50 x 127	10A60N5V22	2913.50	2
OV4254	350 x 50 x 127	10A60N5V42	2913.50	2
OV4156	400 x 25 x 127	10A60L5V22	2061.30	2
OV4138	400 x 40 x 127	10A60L5V22	2911.70	1
OV4255	500 x 50 x 254	10A60L5V22	5371.10	1

CYLINDRICAL GRINDING WHEELS

Type 05

HSN Code: 68042210				
Stock Code	Size	Spec	Unit Price	Std. Pkg.
OV3118	300 x 40 x 127	10A60L5V22	1232.40	2
OV3352	300 x 40 x 127	10A46-3K5V22	1232.40	2
OV3163	300 x 40 x 127	10A60K5V22	1232.40	2
OV3353	300 x 40 x 127	89A60J5V41	2371.30	2
OV4256	350 x 40 x 127	10A46-3L5V22	2262.00	2
OV4080	350 x 40 x 127	10A60L5V22	2262.00	2
OV4053	350 x 40 x 127	10A60N5V22	2262.00	2
OV4257	400 x 40 x 127	10A60K5V22	2911.70	1
OV4258	400 x 40 x 127	10A46-3K5V22	2911.70	1
OV4259	400 x 40 x 127	10A46-3L5V22	2911.70	1
OV4045	400 x 40 x 127	10A601L5V22	2911.70	1
OV4046	400 x 40 x 127	10A60N5V22	2911.70	1
OV4048	400 x 40 x 127	10A60L5V22	2911.70	1
OV4049	400 x 50 x 127	10A60L5V22	3732.80	1
OV4067	400 x 50 x 127	10A60N5V22	3732.80	1
OV4229	450 x 65 x 254	10A463K5V22	5677.70	1
OV4230	450 x 65 x 254	10A60L5V22	5677.70	1
OV4260	500 x 65 x 254	10A46-3K5V22	7368.20	1

CRANKSHAFT WHEELS

Type 01

HSN Code: 68042210				
Stock Code	Size	Spec	Unit Price	Std. Pkg.
OV4066	760 x 40 x 203.2	10A463L5V22	12750.30	1
OV4200	660 x 38.1 x 203.2	10A463L5V22	9858.20	1
OV4206	710 x 25.4 x 203.2	10A463L5V22	8177.50	1
OV4212	760 x 25.4 x 203.2	10A463L5V22	9566.30	1

CENTRELESS GRINDING WHEELS

Type 01

HSN Code: 68042210				
Stock Code	Size	Spec	Unit Price	Std. Pkg.
OV3346	300 x 80 x 140	10A60L5V22C	2081.00	1
OV3347	300 x 80 x 140	10A60L5V42	2081.00	1
OV4056	350 x 100 x 127	10A46-3L5V22	5004.40	1
OV4242	350 x 100 x 127	10A463L5V42	5004.40	1
OV4005	350 x 100 x 127	10A60L5V22	5004.40	1
OV4084	350 x 100 x 127	10A60L5V22C	5004.40	1
OV4243	350 x 100 x 127	10A60L5V42	5004.40	1
OV4244	350 x 100 x 127	10A80L5V42	5004.40	1
OV4013	350 x 100 x 127	10A60N5V22	5004.40	1
OV4119	350 x 100 x 127	10A60N5V22C	5004.40	1
OV4038	350 x 100 x 152.4	10A463L5V22	4789.80	1
OV4245	350 x 100 x 152.4	10A46-3LV42	4789.80	1
OV4246	350 x 100 x 152.4	10A60L5V42	4789.80	1
OV4015	350 x 100 x 152.4	10A60L5V22	4789.80	1
OV4069	350 x 100 x 152.4	10A60L5V22C	4789.80	1
OV4094	350 x 100 x 152.4	CG60L5V93	10145.60	1
OV4092	350 x 100 x 152.4	10A60N5V22C	4789.80	1
OV4247	350 x 100 x 152.4	10A80L5V42	4789.80	1
OV4096	350 x 152.4 x 127	10A60L5V22	7788.50	1
OV4097	350 x 152.4 x 127	10A60L5V22C	7788.50	1
OV4101	400 x 200 x 203.2	10A60L5V22C	11815.10	1
OV4249	500 x 150 x 304.8	10A46-3L5V22	12655.50	1
OV4103	500 x 150 x 304.8	10A463L5V22C	12655.50	1
OV4262	500 x 150 x 304.8	10A 46-3M5V22	10564.40	1
OV4081	500 x 150 x 304.8	10A60L5V22	12655.50	1
OV4107	500 x 150 x 304.8	10A60L5V22C	12655.50	1
OV4261	500 x 150 x 304.8	10A 60 M 5 V22C	12655.50	1
OV4250	500 x 150 x 304.8	10A60L5V42	12655.50	1
OV4065	500 x 150 x 304.8	10A60N5V22C	12655.50	1
OV4043	500 x 200 x 304.8	10A60L5V22C	17521.80	1
OV4012	500 x 200 x 305	10A60L5V22	17521.80	1
OV4113	500 x 200 x 304.8	10A60M5V22	17521.80	1
OV4263	500 x 200 x 304.8	10A60 M5 V22C	20838.00	1
OV4118	600 x 250 x 304.8	10A60L5V22C	42363.60	1

RUBBER BONDED REGULATING WHEELS

HSN Code: 68042210

Stock Code	Size	Spec	Unit Price	Std. Pkg.
------------	------	------	------------	-----------

Type 01

ORR10	230 x 50 x 76.2	A80RR	3037.40	2
ORR3R	230 x 100 x 76.2	A80RR	5037.30	1
ORR5	230 x 150 x 76.2	A80RR	8523.50	1

Type 07

ORR4	300 x 150 x 127	A80RR	14541.20	1
ORR6	300 x 200 x 127	A80RR	19173.40	1

RECESS ON BOTH SIDES WHEELS

Type 07

HSN Code: 68042210

Stock Code	Size	Spec	Unit Price	Std. Pkg.
OV3315	200 x 40 x 31.75	CG60K5V93	1020.00	3

ROLL GRINDING WHEELS

Type 01

HSN Code: 68042210

Stock Code	Size	Spec	Unit Price	Std. Pkg.
OV4137	660 x 50 x 203.2	10A54J7V42	12369.70	1
OV4177	660 x 50 x 203.2	10A54J5V42	12369.50	1



Regd. Office: Grindwell Norton Limited, Leela Business Park, 5th Level, Andheri-Kurla Road, Mumbai - 400 059.
Mumbai Plant: Mora-NAD-Karanja, Uran, Dist. Raigad 400 074. Tel: 022-27230021-2-3-4 Fax: 022-27230012
Nagpur Plant: G-51, Butibori Industrial Area (MIDC), Village Tembhari, Wardha Road, Nagpur 441 122.
Tel: 07104 - 646450 - 80 Fax: 07104 - 265451

A Division of Grindwell Norton Ltd.

Thin Wheels Standard Stock Price List

EFFECTIVE 1ST OCTOBER, 2018



**Abrasives
for every
application**



Depressed Center Discs

HSN Code: 68042210

Type 27

Stock Code	Size	Spec	Unit Price	Std. Pkg.
	Dia x Thk x Bore			

Zeetech DCD's

OZ2	180 x 7 x 22.23	Zeetech	229.82	25
-----	-----------------	---------	---------------	----

Chakra DCD's

OD8	100 x 4 x 16	Chakra Super Cut	63.48	120
OD23	125 x 7 x 22.23	Chakra	102.80	60
OD49	180 x 6.25 x 22.23	Chakra	126.64	30
OD34	180 x 7 x 22.23	Chakra Super Cut Foundry	126.11	25
OD45	180 x 7 x 22.23	Chakra Plus	129.02	25
OD35	180 x 7 x 22.23	Chakra Super Life Foundry	126.11	25
OD37	180 x 7 x 22.23	Chakra Cast Iron	173.37	25
OD65	230 x 7 x 22.23	Chakra Super Life Foundry	225.65	12
OD67	230 x 7 x 22.23	Chakra Cast Iron	262.71	12
ODF19	230 x 7 x 22.23	Chakra Foundry Cast Iron	254.94	12
ODF15	230 x 7 x 22.23	Chakra Foundry Steel	240.24	15

Garuda DCD's

OD7	100 x 6 x 16	Garuda	42.18	80
OD22	125 x 5 x 22.23	Orient A24	58.80	50
OD75	180 x 6 x 22.23	A 24 R B	92.25	30
OD36	180 x 7 x 22.23	Orient A24	109.56	25
OD66	230 x 7 x 22.23	Orient A30	185.96	12
OD91	230 x 7 x 22.23	A24RB	197.40	12



Depressed Center Discs

HSN Code: 68042210

Type 27

Stock Code	Size	Spec	Unit Price	Std. Pkg.
	Dia x Thk x Bore			

Cheetah Super Cut DCD's

ODC4H	100 x 4 x 16	Cheetah Super Cut	25.53	120
ODC5H	100 x 6 x 16	Cheetah Super Cut	30.39	100
ODC6H	125 x 6 x 22.23	Cheetah Super Cut	52.19	60
ODC7	180 x 6 x 22.23	Cheetah Super Cut	75.17	40

Cheetah Long Life DCD's

ODL55H	100 x 6 x 16	Cheetah Long Life	31.26	100
ODL65H	125 x 6 x 22.23	Cheetah Long Life	55.55	60
ODL75	180 x 7 x 22.23	Cheetah Long Life	81.13	40

Kangaroo DCD's

OD5	100 x 4 x 16	Kangaroo Super Cut	26.39	120
OD11	100 x 6 x 16	Kangaroo	32.34	80
OD21	125 x 7 x 22.23	Kangaroo	66.68	60
TR476	180 x 6 x 22.23	Kangaroo	94.02	30
TR476H	180 x 6 x 22.23	Kangaroo	94.02	30

Orient DCD's

D902	180 x 6.75 x 22.23	Garuda Foundry	115.07	30
TR314	180 x 6.7 x 22.23	Garuda	91.18	30

Cut-Off Wheels

HSN Code: 68042210

Stock Code	Size	Spec	Unit Price	Std. Pkg.
	Dia x Thk x Bore			

Chakra Cut-Off Wheels

OR21	125 x 3 x 22.23	Chakra	58.49	120
OR34	180 x 4 x 22.23	Chakra	99.65	50
OR53	230 x 3 x 22.23	Chakra	170.31	30

Garuda Cut-Off Wheels

OR5	100 x 3.2 x 16	Garuda A30	25.52	160
OR24	125 x 3 x 22.23	Garuda	44.52	120
OR35	180 x 3.2 x 22.23	Garuda A30	75.71	50
OR32	180 x 3.5 x 22.23	Garuda A30	75.71	50

Cheetah Cut-Off Wheels

ORC28	180 x 2.8 x 22.23	Cheetah Super Cut	63.32	80
-------	-------------------	-------------------	--------------	----

Orient Cut-Off Wheels

OR2	63 x 2.5 x 10	Orient	35.18	80
OR3	100 x 3 x 9.53	Orient A30	25.52	50
OR4	100 x 3 x 12.7	Orient A30	25.52	50

Large Dia Cut-Off Wheels

OR62	300 x 3 x 25.4	Garuda Super Cut	393.34	10
OR74	350 x 3 x 25.4	Garuda Super Cut	470.67	10
OR75	355 x 3 x 25.4	Chakra Heavy Duty	192.29	25
OR71	400 x 4 x 25.4	Garuda Super Cut	571.25	10
OR72	400 x 3 x 25.4	Garuda Super Cut	571.25	10

Ultra Thin Wheel

OU01H	105 x 1 x 16	Cheetah Ultra-Thin	14.33	200
OUC02H	105 x 2 x 16	Cheetah	22.70	120
OUL11H	105 x 1 x 16	Cheetah Long Life	14.53	200
OR16	180 x 1.6 x 22.23	Double A	50.18	120

Chopsaw Wheels

ORC53	355 x 2.8 x 25.4	Cheetah	117.83	25
ORC53R	355 x 2.8 x 25.4	Cheetah Double Reinforced	138.08	25