

Six Sigma / Process Excellence

Improve Six Sigma Project Tracking and Process Excellence Results

Does your Lean Six Sigma or Process Excellence (PEX) program still rely on spreadsheets, network folders and manual processes to select projects, track results and measure financial benefits?

Welcome to a better way: Upland's PowerSteering.

We have a track record of working with leading pioneers like PepsiCo, Johnson Controls, FMC Corporation, Air Products & Chemicals, Goodyear Tire and Rubber and the U.S. Department of Defense to conceptualize and build their process improvement software solutions. The experience gave us an incredible opportunity to incorporate the voice of the customer into our software development and ongoing refinement.

Our Process Excellence Program Management software solves problems facing executives, deployment managers, project managers, financial representatives, black belts and green belts alike.

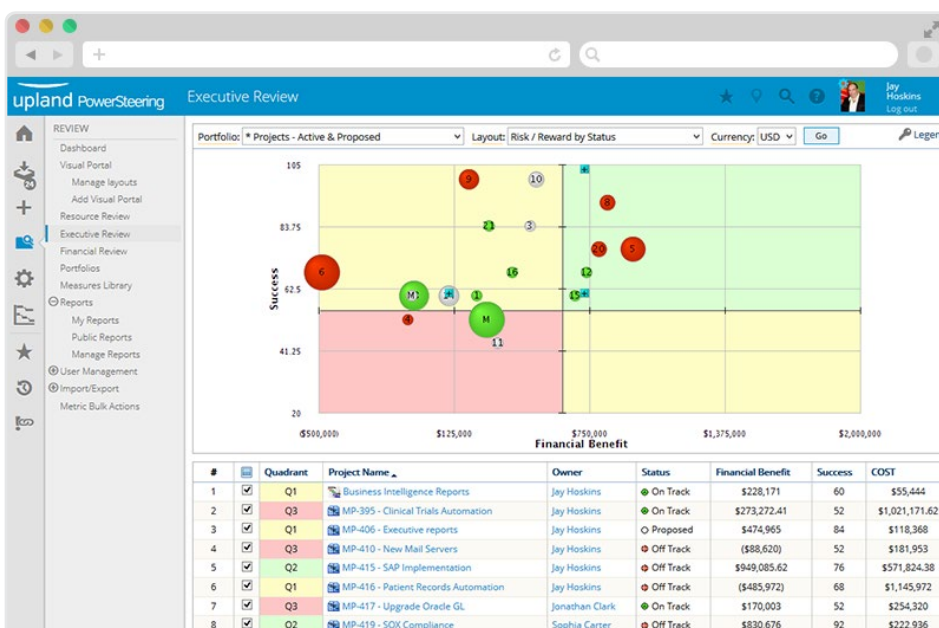
We help you select the right projects, execute them efficiently and improve overall team productivity. And we do it with an easy-to-deploy, on-demand platform.

Why PowerSteering?

- Choose the right projects.
- Increase Black Belt productivity.
- Track financial benefits.
- Identify and replicate successful projects.
- Maintain complete visibility at every phase.

"We rely heavily on PowerSteering to provide us with all of the data we ultimately end up reporting out to our board and to stockholders. We've come to say that if it's not in PowerSteering, it doesn't exist."

— Six Sigma Director, PRAXAIR



Obtain top-down visibility into projects, work and investment.

"A growing and very exciting application of PowerSteering for deployment of Best Practices at JCI is the use of the work generation function to 'Push' proven best practices to selected locations."

— Kevin Filcik, Manager of Continuous Improvement Projects for Johnson Controls, Inc.

Strategy Alignment

Align Strategy from the Top Down

- Solicit project ideas from your entire organization (including non-users).
- Rank ideas by strategic fit.
- Ensure all of your resources are focused on the highest-value corporate priorities.
- Incorporate the voice of the customer into new projects.

Executive Visibility

Always Know Where You Stand with Real-time Insight

- Stay informed of key performance indicators, including status, overall health, financial impact to date, current phase and percentage complete.
- Detect risks before they become threats.
- Centralize all reporting from a single, consolidated and accurate source.
- Identify where management attention is required.

Team Productivity

Increase Efficiency and Streamline Execution

- Reduce project cycle time.
- Streamline gate reviews and approvals.
- Automatically schedule and email reports (a variety of formatting options are available).
- Leverage prior project experience, best practices and templates to save time and enhance results.

Comprehensive Deployment Management Capabilities

PowerSteering provides six major areas of capability and advantage to our customers, ranging from best-in-class product features to industry leading customer support and practical thought leadership. We get personally involved in your success and provide you with ideas to continuously improve your deployment return. Here's how:

Strategy Alignment: Identify and invest in the highest-value projects that reflect your most important corporate objectives.

Executive Visibility: Stay informed with the information you need to make decisions, clear obstacles, and drive results with personalized dashboards and executive views.

Black Belt Productivity: Increase Belt efficiency with time saving capabilities to make their jobs easier.

Multi-Initiative Flexibility and Configurability: Extend PowerSteering to any project-intensive area.

Enterprise Capability, On-Demand: Leverage the power and flexibility of enterprise class software with the accessibility and affordability of an on-demand delivery model.

Thought Leadership, Vision and Expertise: Over 15 years of successful implementation experience spanning nearly every industry.

About PowerSteering

Upland's PowerSteering enables powerful, scalable and uniquely flexible top-down program and portfolio management without requiring granular task and resource tracking. It is a cloud-based software application that combines the robust PPM functionality demanded by global organizations, and provides class-leading analytic and financial tracking capabilities.

About Upland Software

Upland is a leading provider of cloud-based enterprise work management software. With more than 1,200 enterprise customers around the globe, and over 200,000 users, Upland helps teams in IT, marketing, finance, professional services and process excellence run their operations smoothly, adapt to change quickly and achieve better results every day. Contact us at 855-944-7526 or info@uplandsoftware.com.