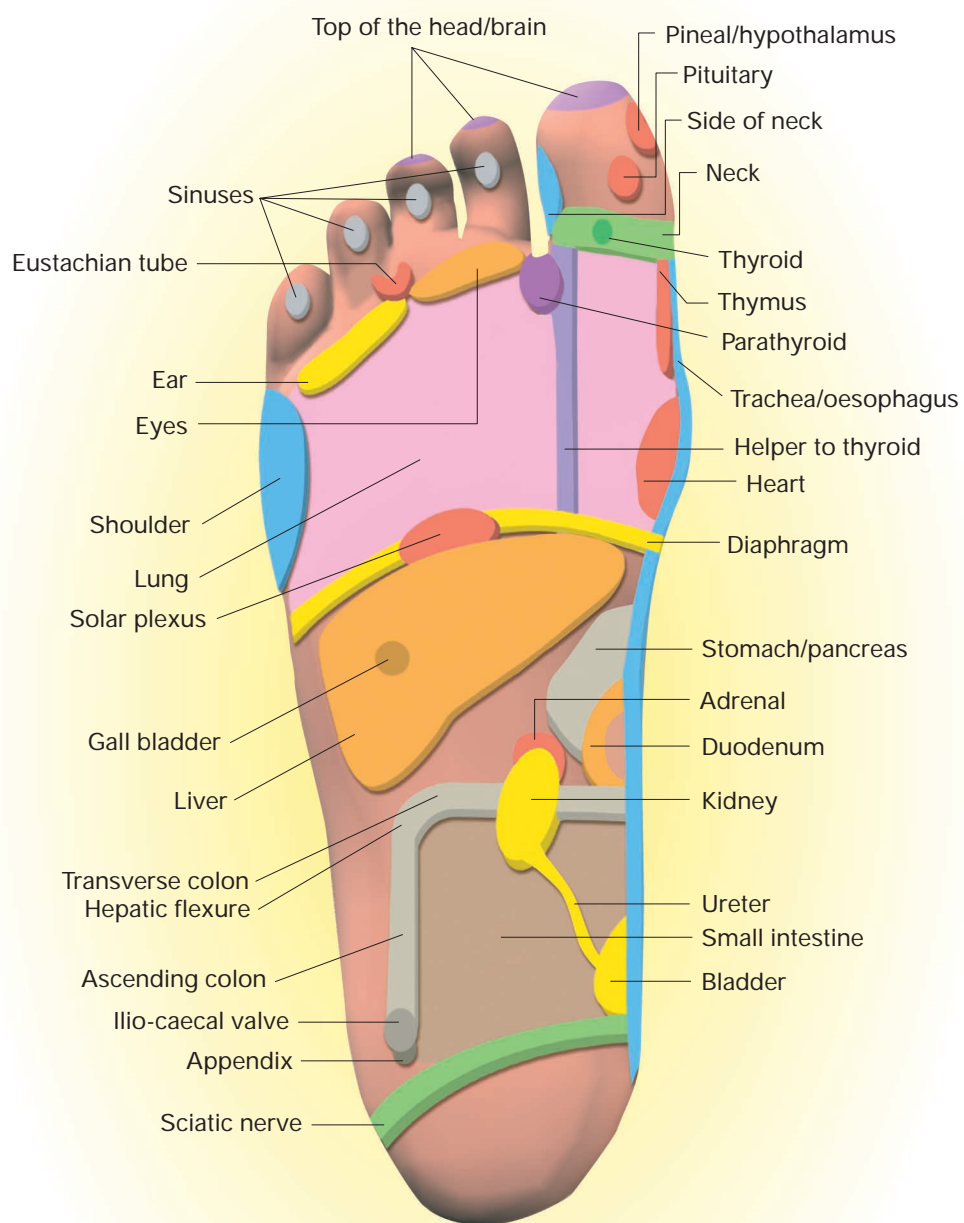
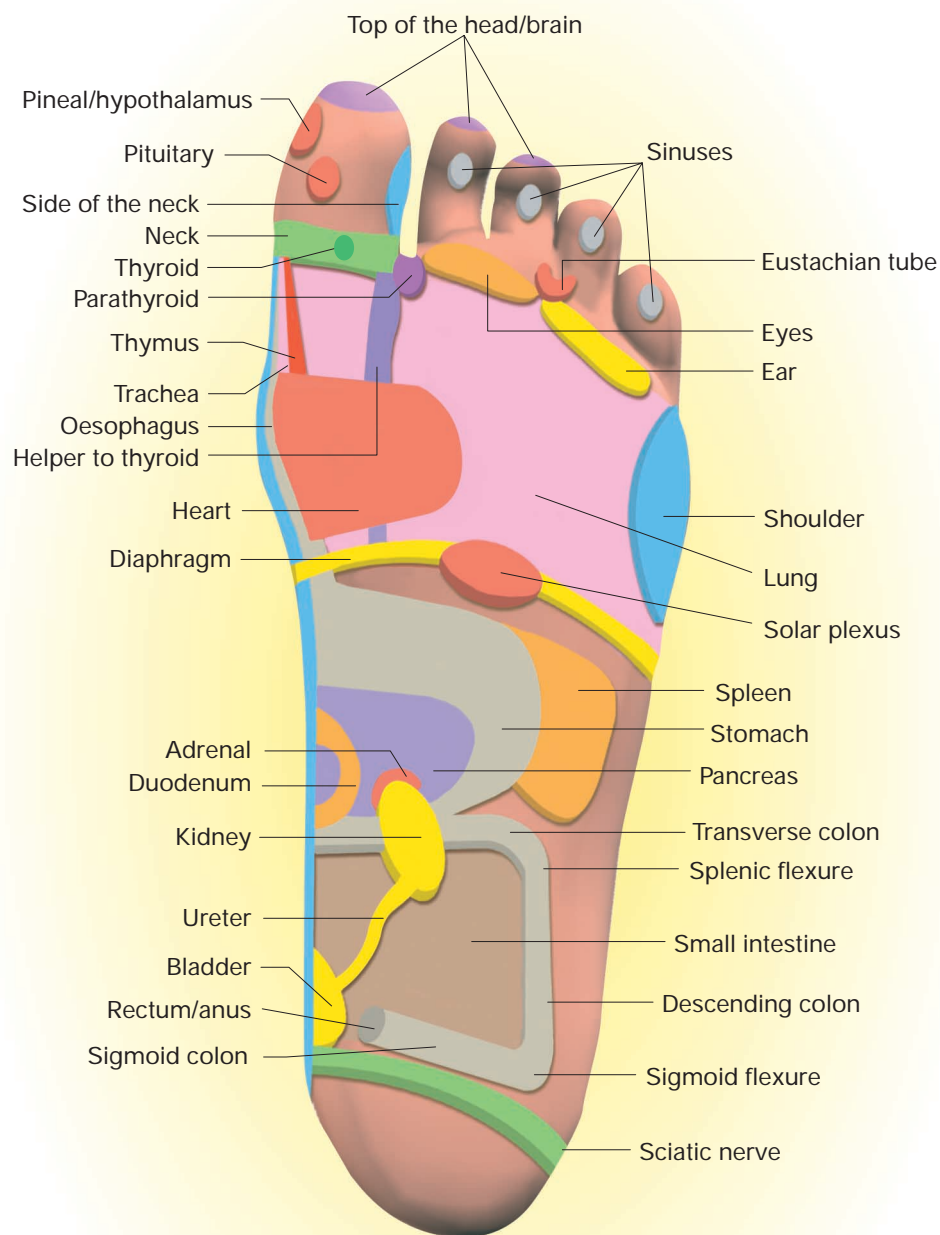


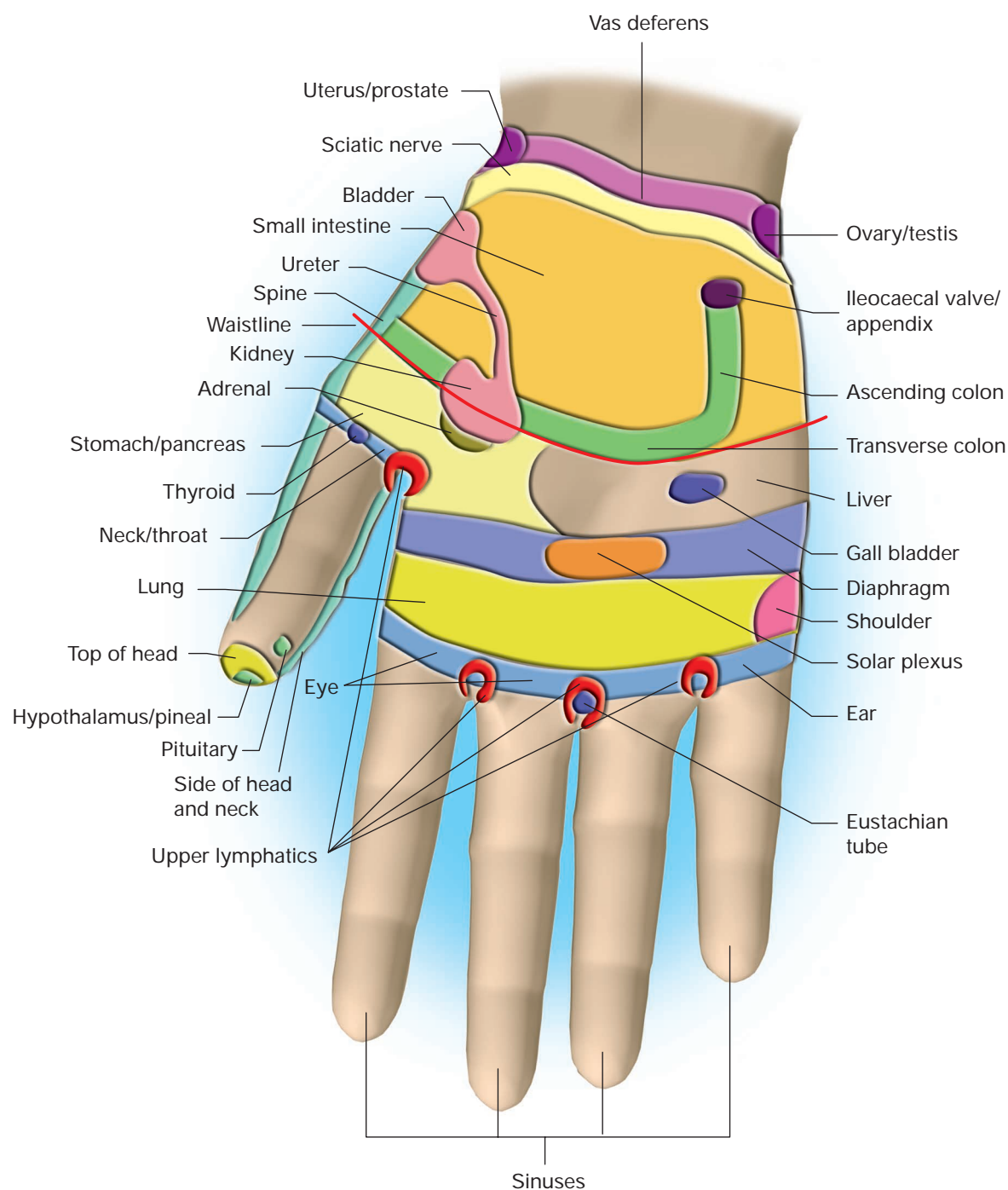
## Reflex areas on the feet



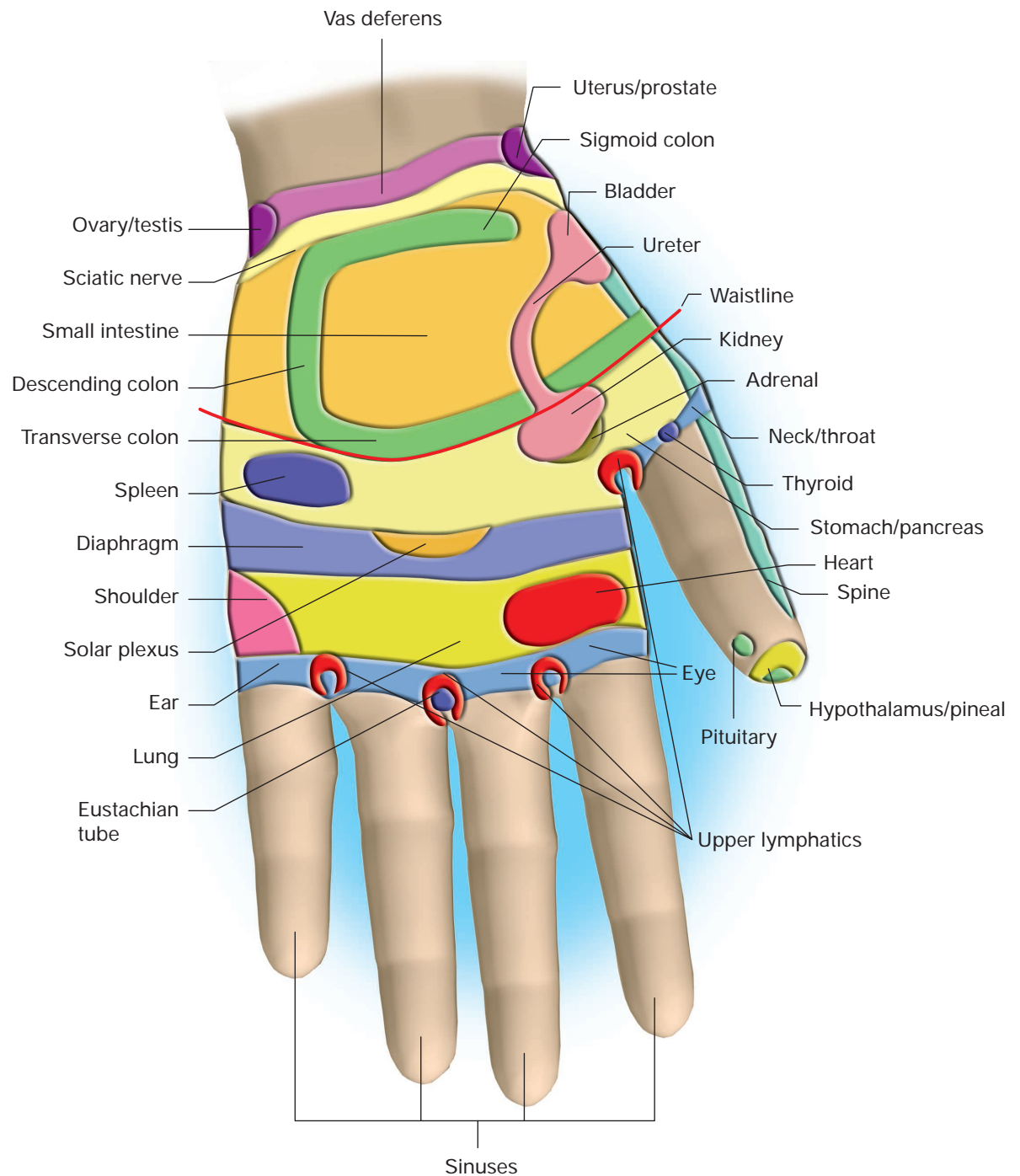
*Figure 7.1 Foot map – plantar view of right foot*



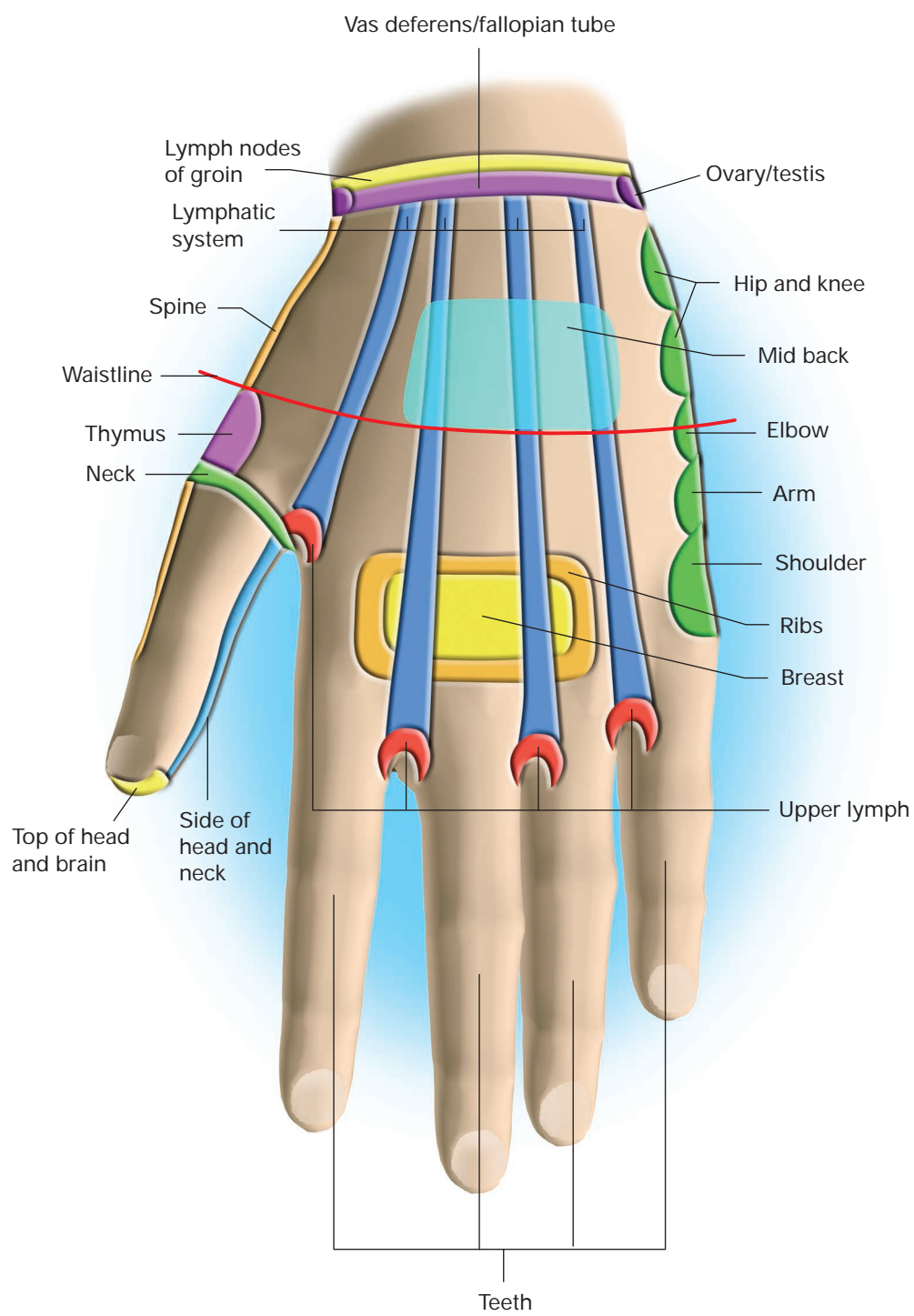
*Figure 7.2 Foot map – plantar view of left foot*



*Reflex areas on the palm of the right hand*



*Reflex areas on the palm of the left hand*



*Reflex areas on the back of the hand*

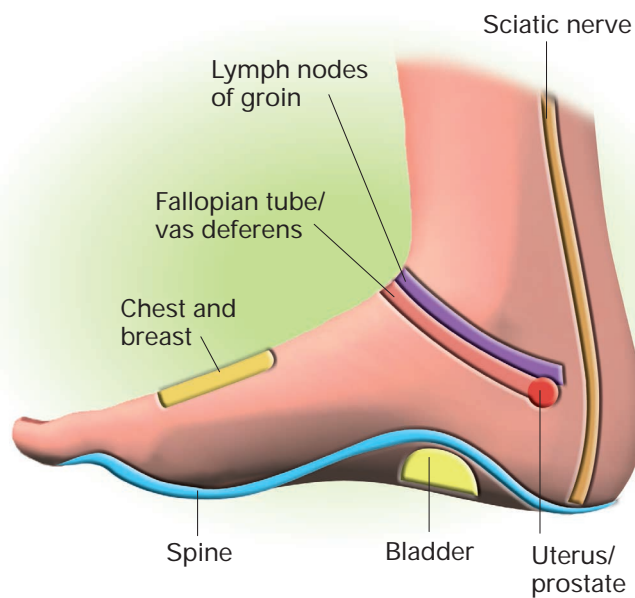
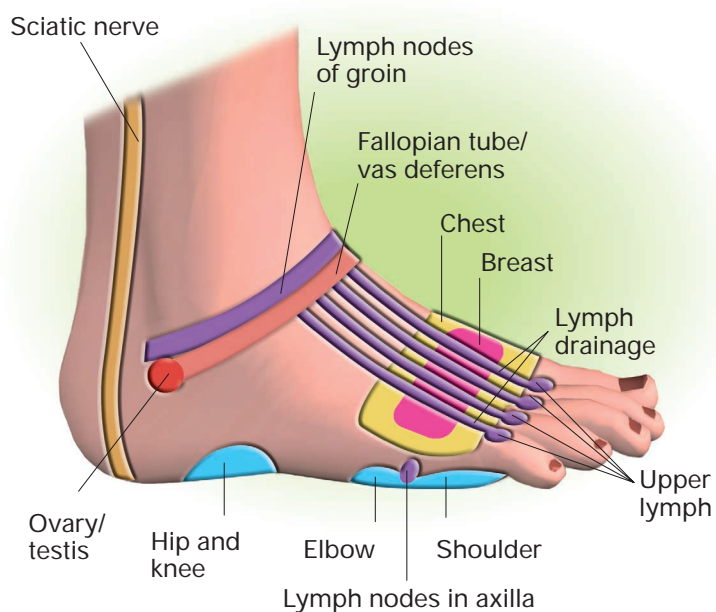


Figure 7.3 Foot map – lateral and medial view of right foot

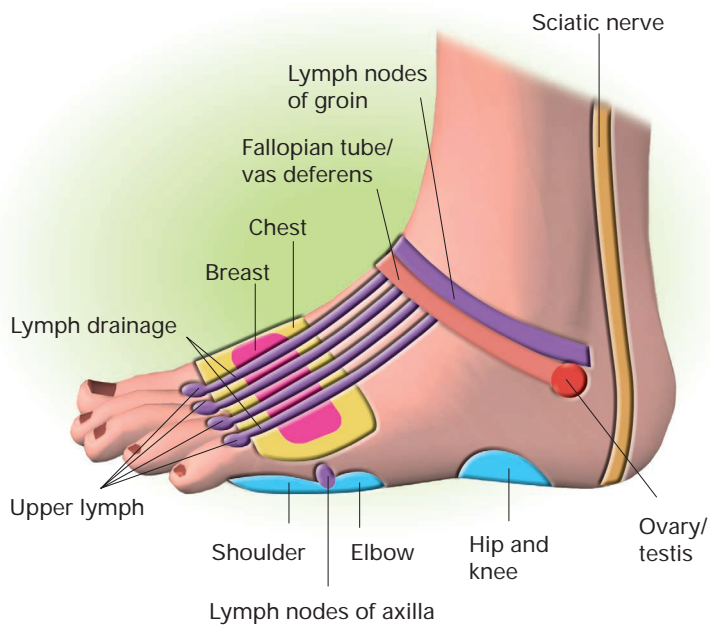
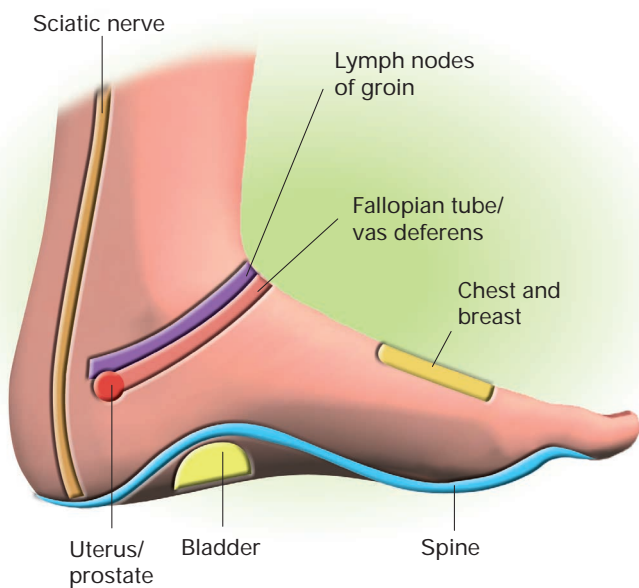


Figure 7.4 Foot map – lateral and medial view of left foot