

## Scope of Work

Contractor shall provide all management, personnel, supplies and equipment to provide installation services of equipment at 114 W. Sherwood Ave, Mertzon, TX 76941. Installation services shall be inclusive of cabling, cable management system, mounting, patch panels, power distribution unit, 66 punch down block and movement of rack system to house patch panels.

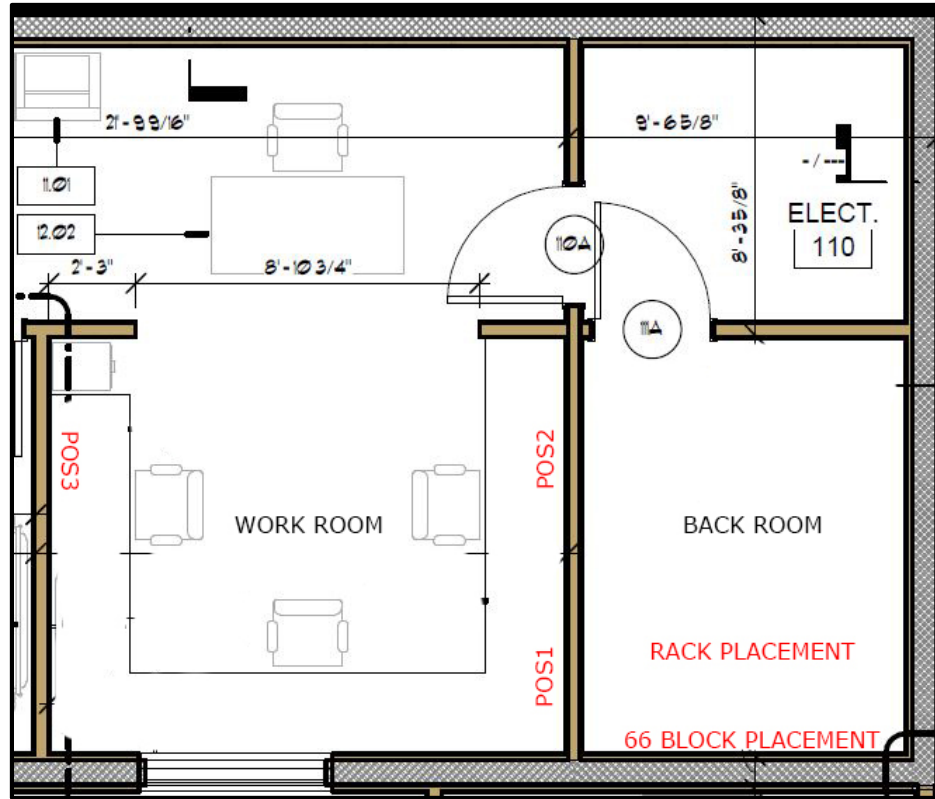
### **Networking must meet the following requirements:**

1. Install contractor supplied structured quality cabling to a minimum standard of **Shielded Cat5e** to be used for the network at new location from exterior of new location to support equipment installed on the interior (work room and back room) of the new structure located at 114 W. Sherwood Ave, Mertzon, TX 76941.
2. Contractor shall use an overhead cable management system to secure cables and prevent them from hanging unsecured or laying in an unsafe manner across the floor.
3. Contractor shall utilize color coded network points which must be terminated at the corresponding color coded patch panel points as shown in the cable diagram. Network points identified at "Cat5e\*" shall not be terminated at the patch panel, but dropped near the 66 punch down block.
4. Contractor shall ensure all terminated network points and leads are clearly marked/labelled to avoid confusion.
5. Contractor shall ensure all installed network points are fully tested for compliance to Cat5e standards.
6. Contractor shall be responsible for providing a written test report inclusive of all network points installed and ensure a copy of the test is provided to Procurement and 911 staff upon completion of installation.
7. Contractor shall establish a performance schedule to be approved by 911 staff and an approved copy submitted to CVCOG Procurement. Schedule shall indicate the time frame for installation and testing.

## Scope of Work

### Location & Floor Plan

114 W. Sherwood Ave, Mertzon, TX 76941



#### 1 - Equipment/Server Rack (located in equipment room)

Type: 2 Post

Overall Height: 84"

Racking Height: 45U

Width: 19"

Must be properly secured to wall or floor

#### 1 –Patch Panel (Mounted in Rack @ 40U)

Height: 1U

Ports: 12 Keystone

9 colored keystone jacks (3 Blue, 3 Green, and 3 Orange)

#### 1 - Power Distribution Unit (Mounted in Rack @ 19U)

Scope of Work

Height: 1U

Power Plugs: 12

Cord Length: Minimum of 10 feet

1 - 66 Punch down Block with cover (located in equipment room)

See floor plan for mounting location

Cat5e Networking

