

HEALTH ACTION PLAN



An integrative process for health promotion through affordable housing development.

In an effort to improve the health of Americans through the built environment, Enterprise developed the [Health Action Plan](#) in partnership with the [USGBC](#) and [The Health Impact Project](#). The Health Action Plan is an innovative process for affordable housing developers to intentionally integrate resident health into the design and development or rehabilitation of their housing.

Implemented through the [Enterprise Green Communities Criteria](#), this process pairs affordable housing developers with public health professionals to learn about and prioritize the health needs of their community through data analysis and community engagement. Armed with this knowledge, the developers and public health practitioners are then positioned to create a Health Action Plan detailing the design and programmatic strategies that will be undertaken to improve the health needs of the residents they aim to serve. To follow through with these strategies and measure their impact, developers will then create an Implementation and Monitoring Plan.

Who the Plan is For:

The Health Action Plan framework was created specifically for use by affordable housing developers who seek to create healthier affordable homes for the residents they serve. The plan and resulting implementation strategy is meant to serve the residents of affordable housing through improved health and wellness.

What We Offer

Enterprise is a willing partner of developers interested in pursuing a Health Action Plan in their next project with a range of services and resources including:

- + Technical Assistance
- + Partnership Facilitation
- + Research/Pilot Evaluation Findings
- + Monitoring Resources

Health Action Plan and the Green Communities Criteria:



To encourage implementation of the Health Action Plan in affordable housing development, Enterprise included the Health Action Plan in Enterprise's 2015 Green Communities Criteria as an optional criterion for certification. The optional criterion requires developers to 1) create a Health Action Plan and 2) develop a plan for implementing and monitoring their health-improving activities and programs. Enterprise Green Communities is widely accepted and used in the affordable housing industry. In 2016 alone, Enterprise Green Communities certified 164 buildings.

The Issue

An estimated 70 percent of differences in health status are associated with people's social and physical environment - which includes housing. Therefore, the quality, affordability, stability and location of a person's home can dramatically affect an individual's health status. As a result we are seeing striking disparities that adversely affect low-income communities. The Health Action Plan helps address this issue by outlining a process to identify key health concerns of resident populations and also improve the overall quality of affordable housing.

It Takes a Village



Residents & Community Stakeholders, Public Health Professionals and Affordable Housing Developers are all central to the Health Action Plan process and their participation is key to creating healthy, affordable homes.

Contact

Krista Egger

Director, National Initiatives

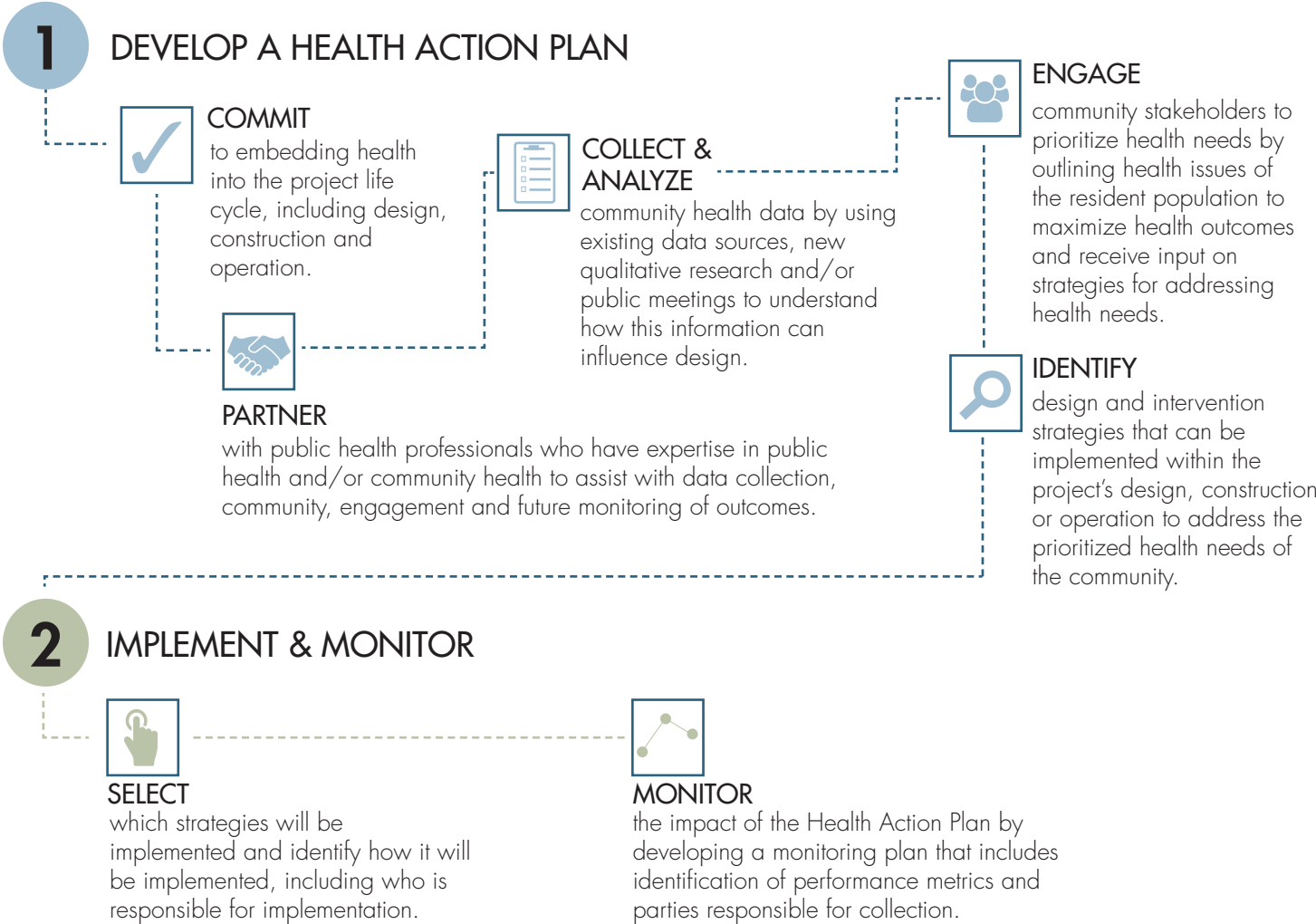
kegger@enterprisecommunity.org



Health Action Plan Process

As detailed in the Enterprise Green Communities Criteria, the Health Action Plan process consists of two major steps
1) Development of a Health Action Plan and 2) Implementation and Monitoring over time.

The Health Action Plan Framework process is illustrated below.



Health Action Plan Pilot Programs

In 2016, the Health Action Plan was **piloted** in five cities across the country as part of a process evaluation performed by Enterprise Community Partners. For the pilot, Enterprise observed how groups implemented the Health Action Plan, tracked time and costs associated with the process, and measured organizational capacity changes as a result of performing a Health Action Plan.



// As developers, we are not service providers so we don't think about what kind of a room could be best for delivering services or how a space can welcome people. Before this pilot, we didn't realize that place and design can intersect to increase the health and wellness of our residents.

- Mercy Housing Southeast