



ARGUS Property Budget

an ARGUS Enterprise Platform Solution

Streamline and Simplify Your Budgeting Process

ARGUS Property Budget™ (Property Budget) streamlines and simplifies the budgeting process at every level and provides consistency throughout the budgeting cycle. Property Budget allows you to focus on the budget itself, not the headaches of the budgeting process.

Property Budget is easy to learn, use, and deploy throughout your entire company. It works with your property management system connecting your historicals with your forecasts.

Property Budget enforces role-based security, enables proactive validation and automates detailed job cost budgeting. Driven by a common database across multiple systems, Property Budget powered by ARGUS Enterprise combines historical, budget and projected data all on one platform.

Data Integration - Historical and Actuals integration with property management systems

Core AE Functionality:

Property
Budget™

Valuation
Cash Flow™

Repertoire
Reporting™

Sensitivity
Analysis™

Investment
Structures™

Business
App Toolkit™

Key Benefits

Streamline your budget process

Focus on the budget, not on maintaining proprietary systems, disparate DCF models or auditing homegrown spreadsheets. Property Budget will consolidate your data into one system, significantly reducing your budgeting cycle.

Ease of data integration

Easily import historicals from your accounting system into Property Budget to provide better visibility into prior budgets and actuals during the budgeting process.

Better visibility into your portfolio

Instant reforecasting with budget comparison and variance reports that provide a more in-depth understanding of your portfolio enabling you to make more informed decisions.

Built on the ARGUS Enterprise platform

Property Budget powered by ARGUS Enterprise keeps your valuations and reforecasts consistent. Properties are collaboratively updated by asset managers and property managers, eliminating the need for duplicate data entry.

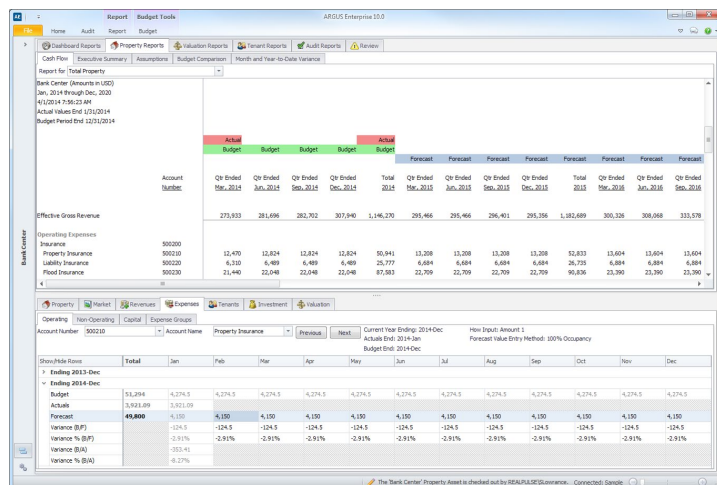
Learn More Today

**Contact us today for your
free one-on-one demo.**

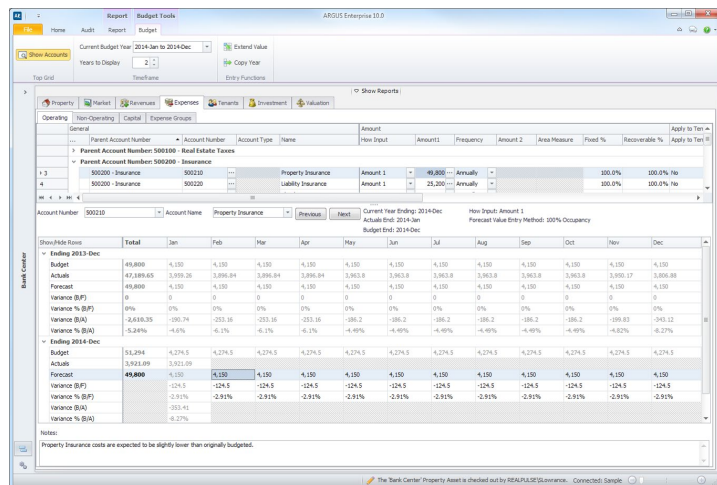
www.argussoftware.com

Key Features

- Integrates with your property management system
- Three tiered Chart of Accounts allowing for header or detailed level reporting
- Monthly GL level input screens with visibility into prior period and YTD actuals
- Role-based workflow, proactive validation and detailed job cost budgeting
- Multiple budgets and reforecasting scenarios
- Budget comparison and variance reports for performance management
- Consolidate budgets across any size portfolio
- Integrate the budgeting and valuation processes
- Lease by lease forecasting of tenant revenues leveraging the full power and flexibility of the ARGUS Enterprise calculation engine



Property Budget Report with Actuals and Forecasts



Budget Input Screens with Historical Actuals and Prior Budget Views

Corporate Headquarters
Houston, TX

Tel + 1 713 621 4343
Tel 888 692 7487

info@argussoftware.com

Europe Headquarters
London, UK

Tel (Local) 08456 440 440
Tel (Global) + 44 (0) 203 551 6700

infoEU@argussoftware.com

**Asia Pacific Headquarters
Singapore**

Tel + 65 6411 2288

infoAP@argussoftware.com

**Asia Pacific Office
Australia**

Tel + 61 2 9262 1332

infoAP@argussoftware.com

About ARGUS Software

For over 25 years, ARGUS Software has led the commercial real estate industry and served clients in over 60 countries. By developing exclusively for this industry, we consistently ensure our products support your ability to stay ahead of your competitors. At ARGUS Software, we strive to provide clients with solutions that are globally relevant, easy to use and save valuable time and money. For further information, visit www.argussoftware.com.

