



7 TON ELECTRIC HYDRAULIC LOG SPLITTER

ITEM: 65061-XP



OWNER'S MANUAL AND SAFETY INSTRUCTIONS

SAVE THIS MANUAL: KEEP THIS MANUAL FOR SAFETY WARNINGS, PRECAUTIONS, ASSEMBLY, OPERATING, INSPECTION, MAINTENANCE AND CLEANING PROCEDURES. WRITE THE PRODUCT'S SERIAL NUMBER ON THE BACK OF THE MANUAL NEAR THE ASSEMBLY DIAGRAM (OR MONTH AND YEAR OF PURCHASE IF PRODUCT HAS NO NUMBER).

FOR QUESTIONS PLEASE CALL OUR CUSTOMER SUPPORT: (909) 628 0880 MON-FRI 9AM TO 3PM PST



GENERAL SAFETY WARNINGS

Read all safety warnings and instructions. Failure to follow the warnings and instructions may result in electric shock, fire and/or serious injury. Save all warnings and instructions for future reference.

The warnings, precautions, and instructions discussed in this instruction manual cannot cover all possible conditions and situations that may occur. It must be understood by the operator that common sense and caution are factors which cannot be built into this product, but must be supplied by the operator. Read carefully and understand all ASSEMBLY AND OPERATION INSTRUCTIONS before operating. Failure to follow the safety rules and other basic safety precautions may result in serious personal injury.

- **KEEP GUARDS IN PLACE** and in working order.
- **KEEP WORK AREA CLEAN.** Cluttered areas and benches invite accidents.
- **DO NOT USE IN AN DANGEROUS ENVIRONMENT.** Don't use power tools in damp or wet locations, or expose them to rain. Keep work area well lit.
- **KEEP CHILDREN AWAY.** All visitors should be kept a safe distance from work area.
- **DON'T FORCE TOOL.** It will do the job better and safer at the rate for which it was designed.
- **USE THE RIGHT TOOL.** Don't force tool or attachment to do a job for which it was not designed.
- **WEAR PROPER APPAREL.** Do not wear loose clothing, neckties, rings, bracelets, or other jewelry which may get caught in moving parts. Nonslip footwear is recommended. Tie long hair back.
- **ALWAYS USE SAFETY GLASSES.** Also use a face or dust mask if cutting operation is dusty. Everyday eyeglasses only have impact resistant lenses, they are NOT safety glasses.
- **DO NOT OVERREACH.** Keep proper footing and balance at all times.
- **MAINTAIN TOOLS WITH CARE.** Keep tools sharp and clean for best and safest performance. Follow instructions for lubricating and changing accessories.
- **DISCONNECT TOOLS** before servicing; when changing accessories, such as blades, bits, cutters, and the like.
- **REDUCE THE RISK OF UNINTENTIONAL STARTING.** Make sure switch is in off position before plugging in.
- **USE RECOMMENDED ACCESSORIES.** Consult the owner's manual for recommended accessories.
- **NEVER STAND ON TOOL.** Serious injury can occur if the tool is tipped or if the cutting tool is unintentionally contacted.
- **NEVER LEAVE TOOL RUNNING UNATTENDED. TURN POWER OFF**
- **DO NOT OPERATE WITH ANY GUARD THAT IS DISABLED, DAMAGED, OR REMOVED.** Keep guards in place and in good working order.
- Wear ANSI-approved safety goggles under full face shield, heavy-duty work gloves and steel-toe work boots during use.
- Crushing hazard. Never place hands or feet between the log and splitter wedge or between the log and the ram during the forward or reverse stroke.

IMPORTANT SAFETY INFORMATION

- Never place hands or body near a hydraulic fluid leak or check for a leak with hands or other body parts. High-pressure fluid can be forced under the skin resulting in serious injury.
- Never split a log that contains any foreign materials such as nails for example.
- **CHECK DAMAGED PARTS.** Before further use of the tool, a guard or other part that is damaged should be carefully checked to determine that it will operate properly and perform its intended function check for alignment of moving parts, binding of moving parts, breakage of parts, mounting, and any other conditions that may affect its operation. A guard or other part that is damaged should be properly repaired or replaced.
- Do not use the splitter on logs longer than 20.5" or with a diameter greater than 10".
- Hold the rounded, bark side of logs when loading or positioning, never the ends. Never place hands or any body parts between a log and any part of the log splitter.
- Never load or unload logs while the ram is moving.
- Do not attempt to split logs across the grain. Doing so will damage the log splitter and could cause pieces of log to be rejected outward, injuring the operator or bystanders.
- Never attempt to split more than one log at a time. A piece of log can unexpectedly be thrown from the machine, causing severe personal injury.
- Remove split logs away from the log splitter immediately. Split logs left near the log splitter are a tripping hazard.
- The use of accessories or attachments not recommended by the manufacturer may result in the risk of injury.
- Set up and operate only on a flat, level, dry and solid surface with wheels chocked.
- When servicing, use only identical replacement parts.
- Only use safety equipment that has been approved by an appropriate standards agency.
- Maintain labels and nameplates on the tool. These carry important safety information. If unreadable or missing, contact Stark Tools for a replacement.
- Avoid unintentional starting. Prepare to begin work before turning on the tool.
- People with pacemakers should consult their physician(s) before use. Electromagnetic fields in close proximity to heart pacemaker could cause pacemaker interference or pacemaker failure.
- **DO NOT OPERATE WITH ANY GUARD DISABLED, DAMAGED, OR REMOVED.** Keep guards in place and in good working order.
- **WARNING:** The cord of this product contains lead and/or di (2-ethylhexyl) phthalate (DEHP), chemicals known to the State of California to cause cancer, and birth defects or other reproductive harm. Wash hands after handling. (California Health & Safety Code § 25249.5, et seq.)
- **WARNING:** Some dust created by power sanding, sawing, grinding, drilling, and other construction activities, contains chemicals known to the State of California to cause cancer and birth defects or other reproductive harm. Some examples of these chemicals are:
 - Lead from lead-based paints
 - Crystalline silica from bricks and cement or other masonry products
 - Arsenic and chromium from chemically treated lumber Your risk from these exposures varies, depending on how often you do this type of work. To reduce your exposure to these chemicals: work in a well ventilated area, and work with approved safety equipment, such as those dust masks that are specially designed to filter out microscopic particles.(California Health & Safety Code § 25249.5, et seq.)

IMPORTANT SAFETY INFORMATION

- **NEVER** use an extension cord longer than 25 feet. Minimum cord gauge must be 16, an undersized cord will cause a drop in line voltage resulting in a loss of power and overheating.
- **ALWAYS** use your hand to operate the control lever and the switch. NEVER use your foot or any extension device.
- **NEVER** modify the plug provided if it will not fit the outlet. Have the proper outlet installed by a qualified electrician.
- **ALWAYS** use a 3-wire extension cord with 3-prong grounded plugs and a 3-pole receptacles that accept this plug
- **NEVER** loosen or remove the hydraulic fitting or the cap of the hydraulic tank while the log splitter is running.
- **NEVER** operate your log splitter when it is in poor mechanical condition or in need of repair.
- **ALWAYS** unplug the power cable before performing any maintenance and repair. Periodically check all nuts, bolts, screws hydraulic fittings and be sure the hose clamps are tightened.
- **NEVER** tamper with the motor to run it at excessive speeds. The maximum motor speed is preset by the manufacturer and is within safety limits.
- **NEVER** adjust the hydraulic valve. The system is preset at the factory and is within safety limits.
- **ALWAYS** check the level of hydraulic oil before operation.
- **ALWAYS** Repair or replace a damaged power cord immediately.
- **NEVER** check for leaks of hydraulic fluids with your hand. Fluid escaping from a small hole can be almost invisible. Escaping fluid under pressure can have sufficient force to penetrate skin, causing serious injury or even death. Leaks can be detected by passing a piece of cardboard over the suspected leak and looking for discoloration.
- **ALWAYS** seek medical attention immediately if injured by escaping hydraulic fluid. Serious infection or physical reaction can develop.
- **ALWAYS** be sure to relieve all pressure by shutting off the engine and moving the valve control handle back and forth should it become necessary to loosen or remove the hydraulic fitting.
- **NEVER** remove the cap from the hydraulic tank or reservoir while the log splitter is running. Hot oil under pressure could result in serious injury.
- **NEVER** adjust the hydraulic valve, the pressure relief valve on your log splitter is preset at the factory. Only a qualified service technician should perform this adjustment.
- **NEVER** operate your log splitter near a flame or spark, hydraulic fluid is flammable and can explode.
- **ALWAYS** have a CLASS B fire extinguisher with you when operating this log splitter in dry areas as a precautionary measure.
- **NEVER** move this log splitter while the motor is running.
- **NEVER** carry cargo or wood on your log splitter.



SAVE THESE WARNINGS

ASSEMBLY

NOTE: This log splitter is assembled at the factory and has been pre-filled with hydraulic oil. Refer to the diagram below should it become necessary to disassemble the unit for repair or replacement of parts.

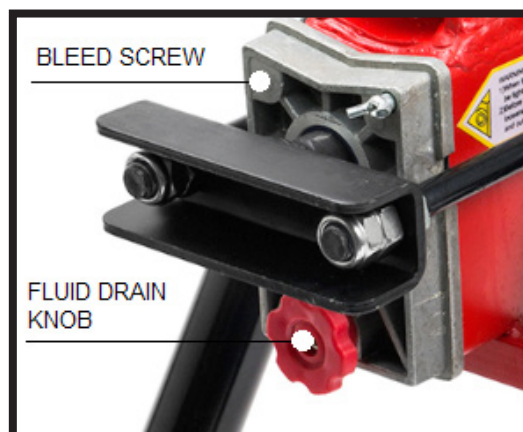


NOTE: This machine is only intended for homeowners and non-commercial users to split firewood as detailed in the instructions and not for any other purpose.

NOTE: Ensure the power supply is not conneted while preparing the log splitter for use.

NOTE: If hydraulic fluid is difficult to obtain, Dextron automatic transmission fluid can be substituted. Use only clean oil and be sure to prevent dirt from entering the hydraulic reservoir. Do not mix AW32 hydraulic fluid with Dextron hydraulic flud. Log splitter is shipped with AW32 hydraulic fluid.

IMPORTANT: Before operating the log splitter, turn the bleed screw two turns to allow air to be released from the hydraulic system. A flow of air through the bleed screw should be detectable while log splitter is in use. Close the bleed screw after operation. Make sure the bleed screw is closed before and during transport. **Failure to loosen the bleed screw will cause pressure to build up in the hydraulic tank and could damage the seals and affect the operation of the log splitter.**



ASSEMBLY AND OPERATION



Always wear safety glasses, gloves and shoes as well as suitable clothing when operating this log splitter. Never wear jewelry, or loose clothing and be sure to tie long hair back so as not to get tangled in moving parts.



Keep hands and feet clear of the ram and wedge at all times.



Keep away from flammable liquids and gases before starting the machine.

OPERATING THE DEVICE

1. Place the log splitter on a sturdy, level surface. Block the wheels to prevent movement of the log splitter during operation.
2. Make sure the handle is free of oil, grease and resins.
3. Oil the wedge and the top of the beam for smoother operation.
4. Ensure the equipment is in safe working condition. Operate the unit without loading to make sure it is working normally. Check all nuts, bolts and hydraulic fittings are tight. Check the switch, power cable and plug for damage. Check all safety shields are in proper position.
5. Check that the outlets main voltage and frequency match the data stated in the model plate or technical specifications in this manual.
6. Plug in the power cable and switch on the motor. NEVER use an extension cord longer than 25 feet. The power supply to this log splitter must have a protection device (circuit breaker) for over or under voltage.
7. Place a log on the beam against the push plate. Make sure the log is securely on the beam and up against the push plate. Logs should be cut with square ends and to a maximum length of 20" in advance. Always use extra care when splitting logs with unsquare ends.
8. Two controls must be activated to operate the log splitter. The hydraulic control lever and the On/Off push button must be held during the splitting process. If either control is released, the log splitter will stop working.
9. Loosen the bleed screw one or two turns if necessary.
10. Depress and hold the On/Off push button with your right hand and allow the motor to cycle up to speed.
11. Push down the hydraulic control lever;
12. Release the On/Off button and the control lever when the log is split, the push log will then retract.

REPLACING HYDRAULIC FLUID

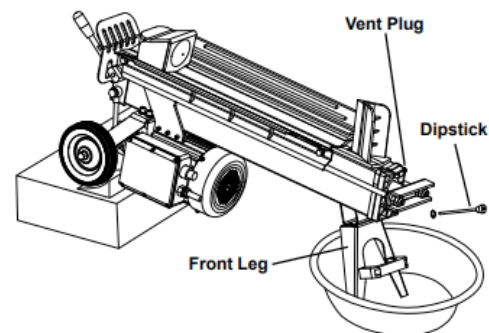
Note: Change hydraulic fluid after every 100 hours of use.

Note: Be sure to unplug the power cord before replacing hydraulic fluid.

1. Place a large pan under the motor end of the log splitter.
2. Use the included hex wrench to loosen the fluid drain bolt and remove the bolt with the attached dipstick.
3. Raise the splitting wedge end of the log splitter to allow the fluid to drain into the pan. Lower the splitter when it is empty.
4. Dispose of the old hydraulic fluid in accordance with local regulations.

ASSEMBLY

5. Raise the motor end of the splitter and make sure it is secure.
6. Pour approximately 3.2 liters of hydraulic fluid into the tank.
7. Check the fluid level of the dipstick, add more fluid if needed.
8. Replace the fluid drain bolt and tighten securely.
9. Lower the log splitter.



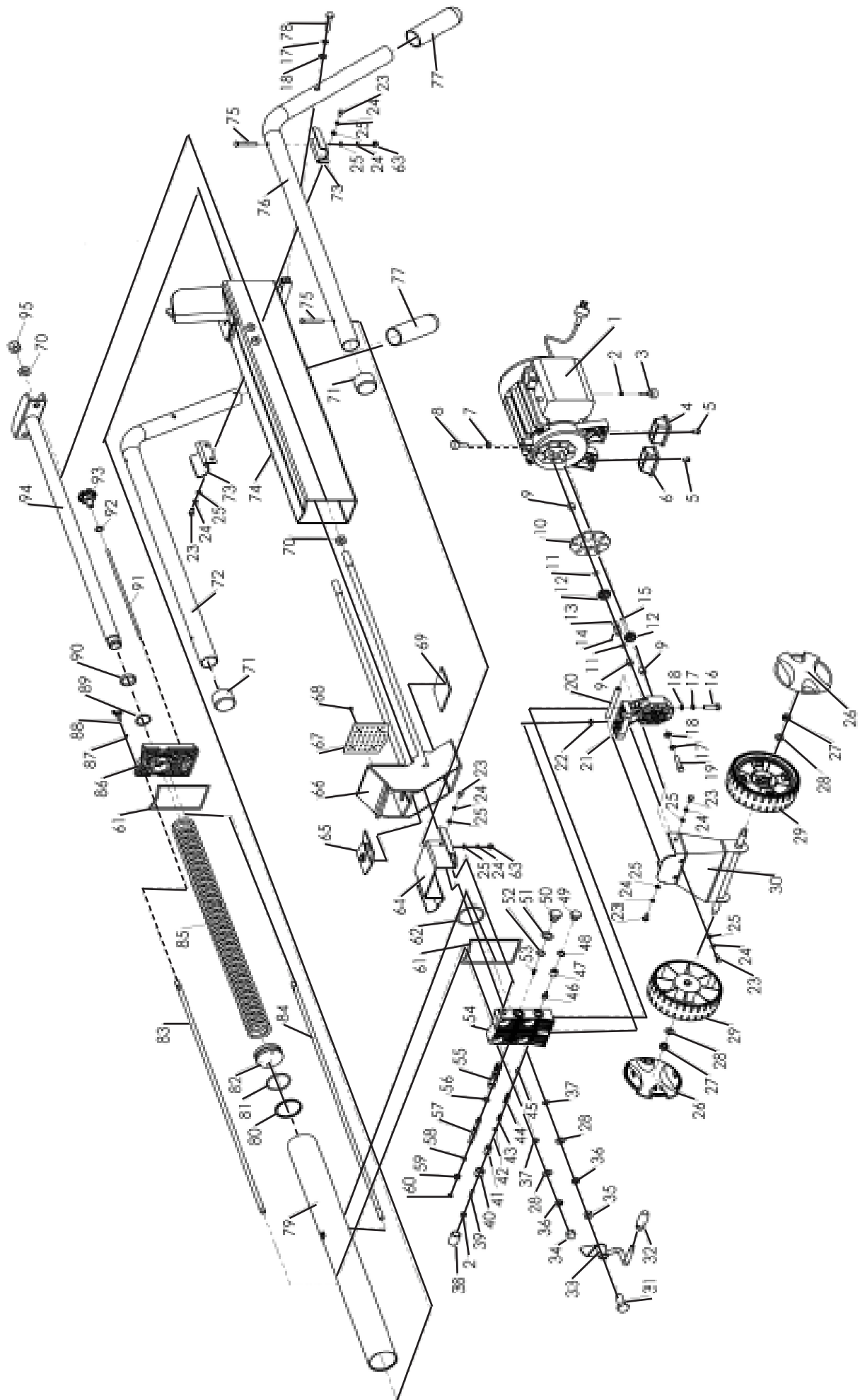
STORING THE LOG SPLITTER

- Allow the log splitter to cool down for five minutes before storing.
- Switch off and unplug the log splitter before storing.
- Protect the power supply cable from heat, sunlight, aggressive liquids and sharp edges.
- Store the unit in a clean, dry area. Do not store outdoors or next to corrosive materials or in a damp environment.
- Store the log splitter out of reach of children.

TROUBLESHOOTING

TOOL WILL NOT START	<ol style="list-style-type: none"> 1. Power cord is not connected 2. No power at outlet 3. Tool's overload protection device has tripped to protect the tool from damage 4. Internal damage or wear 	<ol style="list-style-type: none"> 1. Plug in the power cord 2. If the outlet is unpowered, check the circuit breaker. If the breaker is tripped, make sure the circuit is the right capacity for the tool and has no other loads 3. Turn off and unplug the splitter and allow it to cool for 1/2 hour and restart 4. Have a qualified technician service the tool
WOOD WILL NOT SPLIT OR SPLITS VERY SLOWLY	<ol style="list-style-type: none"> 1. Log is not positioned properly 2. The size or hardness of the log exceeds the machine's capacity 3. Cutting wedge is dull 4. Hydraulic fluid level is low 	<ol style="list-style-type: none"> 1. Reposition log. 2. Only split logs within the Log Capacity range. Capacity will be limited on hardwood logs and green lumber. 3. Sharpen the Cutting Wedge 4. Check fluid level and add fluid as needed
RAM VIBRATES, MOVES ERRATICALLY OR DOES NOT MOVE	<ol style="list-style-type: none"> 1. Log splitter is not on level ground 2. Hydraulic fluid level is low 3. Excessive air trapped in hydraulic system 	<ol style="list-style-type: none"> 1. Reposition tool so it is level with both ends at same height 2. Check fluid level and add fluid as needed 3. Bleed hydraulic system
FLUID LEAKING FROM HYDRAULIC SYSTEM	<ol style="list-style-type: none"> 1. Accumulated air is trapped in hydraulic system while operating 2. Tool moved with vent plug loosened 3. Dipstick is not tightened securely 4. Hydraulic fittings and seals are worn 	<ol style="list-style-type: none"> 1. Loosen Vent Plug before operating too 2. Tighten Vent Plug before moving tool 3. Tighten the Dipstick 4. Have qualified technician service tool

PARTS DIAGRAM



PARTS LIST

Item	Stock #	Description
1	56206-001	Motor
2	56206-002	Nut M6
3	56206-003	Rubber foot
4	56206-004	Right rubber foot
5	56206-005	bolt M6×12
6	56206-006	Left rubber foot
7	56206-007	Nut M8
8	56206-008	Washer
9	56206-009	Bearing bush
10	56206-010	Claboard
11	56206-011	Steel ring10
12	56206-012	Gear
13	56206-013	Gear shaft
14	56206-014	Steel ball 2.5
15	56206-015	Round pin 2.5×4
16	56206-016	Bolt M8×30
17	56206-017	Spring washer 8
18	56206-018	Flat washer 8
19	56206-019	Bolt M8×55
20	56206-020	Shaft
21	56206-021	Cover
22	56206-022	Oil seal 10×2.65G
23	56206-023	Bolt M6×12
24	56206-024	Spring washer 6
25	56206-025	Flat washer 6
26	56206-026	wheel cap
27	56206-027	Locking nut M10
28	56206-028	Flat washer 10
29	56206-029	Wheel
30	56206-030	Wheel bracket

Item	Stock #	Description
31	56206-031	Bolt
32	56206-032	Rubber sleeve
33	56206-033	Hydraulic control lever
34	56206-034	Nut M10
35	56206-035	Nut M10
36	56206-036	Spring washer 10
37	56206-037	Oil seal 9.5×2.65G
38	56206-038	Plastic cover
39	56206-039	BoltM6×20
40	56206-040	Hexagon nut
41	56206-041	Bush for shaft
42	56206-042	Oil seal 4.87×1.8G
43	56206-043	Shaft
44	56206-044	Adjustment spring
45	56206-045	Cone valve
46	56206-046	Oil valve
47	56206-047	Screw
48	56206-048	Oil seal 11.8×2.2G
49	56206-049	Hexagon bolt
50	56206-050	Bolt
51	56206-051	Washer16×t1
52	56206-052	Oil seal 14×1.8G
53	56206-053	spring II
54	56206-054	Journey valve
55	56206-055	Control valve
56	56206-056	Oil seal 11.2×1.8G
57	56206-057	Front cover
58	56206-058	Oil seal 5.6×1.8G
59	56206-059	Spring I
60	56206-060	Washer 6

Item	Stock #	Description
61	56206-062	Washer
62	56206-063	Oil seal 48.7×3.55G
63	56206-064	Nut M6
64	56206-065	Front bracket
65	56206-066	Upper pad
66	56206-067	Push rod
67	56206-068	Tine plate
68	56206-069	Bolt M4×6
69	56206-070	Down pad
70	56206-071	Nut M14
71	56206-072	Rubber plug
72	56206-073	Work table guard
73	56206-074	Back bracket
74	56206-075	Beam
75	56206-076	Step bolt M6×50
76	56206-077	Work table guard
77	56206-078	Rubber handle

Item	Stock #	Description
78	56206-079	Bolt M8×50
79	56206-080	Cylinder
80	56206-081	Ring58×52.5×4
81	56206-082	Oil seal43.7×3.55G
82	56206-083	Piston
83	56206-084	stud
84	56206-085	stud
85	56206-086	Spring
86	56206-087	Rear cover
87	56206-088	Oil seal 3.6×1.8G
88	56206-089	Bleed screw
89	56206-090	Oil seal30×2.65G
90	56206-091	Washer FC30×38×5
91	56206-092	Dipstick
92	56206-093	Oil seal 11.8×2.65G
93	56206-094	Knob
94	56206-095	Piston rod
95	56206-096	lock nut M14

TROUBLESHOOTING

1. Switch off the power and unplug the log splitter.
2. Always check the hydraulic oil level before operation. Operating the log splitter without adequate hydraulic oil can cause damage to the log splitter.
3. Wipe the unit after each use with an oil rag to prevent rust.
4. The hydraulic system is preset at the factory. Do not adjust the valve.
5. If the ram moves slowly or erratically, there may be air in the system or insufficient oil. Check the level of hydraulic oil with the dipstick.
6. For other hydraulic and motor problems not addressed in this manual, contact a qualified technician.
7. If the wedge is dull or nicked, sharpen it. Always wear safety glove while handling the wedge
8. All replacement parts must meet the manufacturer's specifications.

Note: If the motor is overloaded for a long time, the thermal protector will disconnect the power of the motor. Switch off and unplug the power cord to cool down the motor for 30 minutes. Restart the motor and the log splitter should operate again.

Note: Switch off and unplug the power cable quickly if the machine is acting abnormal.

TECHNICAL SPECIFICATIONS

MAXIMUM SPLITTING FORCE	7 TONS
ELECTRICAL REQUIREMENT	120V / 60Hz
POWER OUTPUT	1500W
RATE CURRENT	15A
MOTOR SPEED	3400 RPM
POWER CABLE	SJTW 14AWG (2.08MM)
HYDRAULIC CAPACITY	2.8 QUARTS (3.2L)
CYCLE TIME	25 SECONDS
MAXIMUM LOG LENGTH	20.5"
MAXIMUM LOG DIAMETER	10"
HYDRAULIC PRESSURE	3000 PSI
MAXIMUM CYLINDER STROKE	18"
TIRE SIZE	7"
MACHINE DIMENSIONS (LxWxH)	38-1/4" x 11" X 18"
NET WEIGHT	97 LBS

****Tonnage and cycle times may vary dependent upon mechanical and environmental conditions.**

PLEASE READ THE FOLLOWING CAREFULLY

THE MANUFACTURER AND/OR DISTRIBUTOR HAS PROVIDED THE PARTS LIST AND ASSEMBLY DIAGRAM IN THIS MANUAL AS A REFERENCE TOOL ONLY. NEITHER THE MANUFACTURER OR DISTRIBUTOR MAKES ANY REPRESENTATION OR WARRANTY OF ANY KIND TO THE BUYER THAT HE OR SHE IS QUALIFIED TO MAKE ANY REPAIRS TO THE PRODUCT, OR THAT HE OR SHE IS QUALIFIED TO REPLACE ANY PARTS OF THE PRODUCT. IN FACT, THE MANUFACTURER AND/OR DISTRIBUTOR EXPRESSLY STATES THAT ALL REPAIRS AND PARTS REPLACEMENTS SHOULD BE UNDERTAKEN BY CERTIFIED AND LICENSED TECHNICIANS, AND NOT BY THE BUYER. THE BUYER ASSUMES ALL RISK AND LIABILITY ARISING OUT OF HIS OR HER REPAIRS TO THE ORIGINAL PRODUCT OR REPLACEMENT PARTS THERETO, OR ARISING OUT OF HIS OR HER INSTALLATION OF REPLACEMENT PARTS THERETO.

Record Product's Serial Number Here: _____

Note: If product has no serial number, record month and year of purchase instead.

Note: Some parts are listed and shown for illustration purposes only and are not available individually as replacement parts.



SAVE THESE INSTRUCTIONS.

Questions, problems, missing parts?



Before returning to your retailer, our exceptional customer service is here to help.

Call Us: 909.628.0880

Email Us: customer@xtremepowerusa.com

Hours of Operation: 9am - 4pm (Monday - Friday)

PRODUCT MADE IN CHINA