

# 2022



- ❖ Learn about the population, climate, education and physical characteristics of the City of Irving.
- ❖ **Irving, Texas, is centrally situated between Dallas and Fort Worth.**
- ❖ Irving continues to shine as a vibrant urban community that is a destination for investment and high-wage jobs

# SNAPSHOT



# WHAT IS INSIDE

5

## **Irving ... What Has Changed?**

6

## **Population Characteristics**

The city's rich diversity is exhibited by its population and the number of languages spoken by residents.

7

## **Income and Employment**

Irving is home to more than 8,500 local and multinational companies that operate global headquarters in Irving.

8

## **Physical Characteristics**

Of Irving's 67.9 square miles of land area, there are more than 80 parks on 1,873 park acres beg outdoor activity.

9

## **Climate**

In Irving, the summers are hot and muggy the winters are cold and windy.

10

## **Housing and Land Use**

Irving offers a variety of housing options from single-family to multifamily — houses, apartments and townhomes.

12

## **Education**

Residents are well served by three school districts, a variety of private and parochial schools, and academies.

13

## **City Government and Tax Information**

The City of Irving is a full-service municipality that operates with a council-manager form of government.

14

## **City Historical Information**

Settlers came to the area that is now Irving in the 1850s.

15

## **City Council**



The 2020 decennial Census was completed during the first wave of the COVID-19 pandemic. Due to almost nationwide lockdowns that took place precisely when the Census Bureau's nationwide count was scheduled to take place, reporting deadlines were extended and the Census Bureau was delayed in providing its results to the president.

The impact of these delays and of the epidemic are still being felt as the public release of many Census products is taking longer than usually expected.

The primary purpose of the 2020 decennial Census is to provide apportionment data (population data primarily) to the president, congress and states, so that congressional representation for each state can be fairly determined, and so that states have the data needed to update voting district boundaries that comply with all State and Federal election laws.

That data has been released, and has already been used by the City Council of Irving to redraw council district boundaries for Irving. Other data collected by the 2020 Census has not yet been released to the public.

Data such as age distribution, the number of families and households in a community, and household structure are expected in the near future.

However, due to the Census Bureau's commitment to protect respondent privacy and the increasing ability of computers to cross reference and filter out information, there is current debate about what data to release at each geographic level.

Only data released at the smallest level, the Census Block, can be effectively aggregated for a City Council district profile.

The annual American Community Survey (ACS) also continues to collect and release data. Unfortunately, due to the disruptions in data collection caused by the pandemic, the Census Bureau has not released the results of the 2020 ACS in the usual manner.

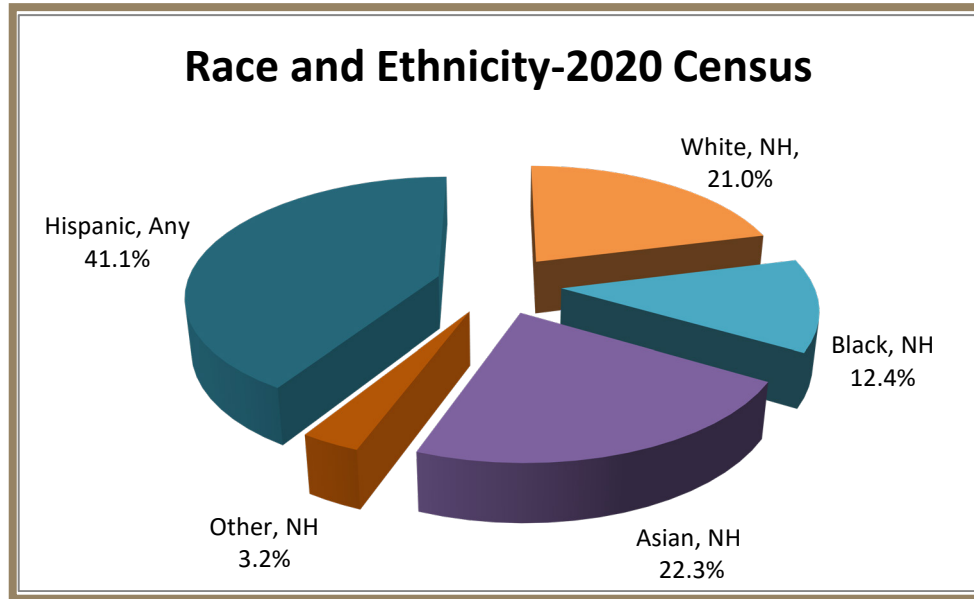
The data collected through the 2020 ACS is not considered as reliable as the information normally obtained and is being released as "experimental" data on a separate website from most Census Bureau data. It also is not being released at the citywide or lower levels, therefore, the 2019 ACS data is still the most current data for most topics.



# Population Characteristics

6

Irving, Texas, is centrally situated between Dallas and Fort Worth. The city's rich diversity is exhibited by its population and the number of languages spoken by residents. In fact, Irving has one of the most diverse ZIP codes in the United States.



**2020 Population  
(2020 Census)**  
256,684

**2021 Population Estimate**  
245,690

**Median Age (2019 ACS) = 32**  
Male 31.8  
Female 32.1

Total Male Population (2019 ACS) = 121,457  
Total Female Population (2019 ACS) = 118,322

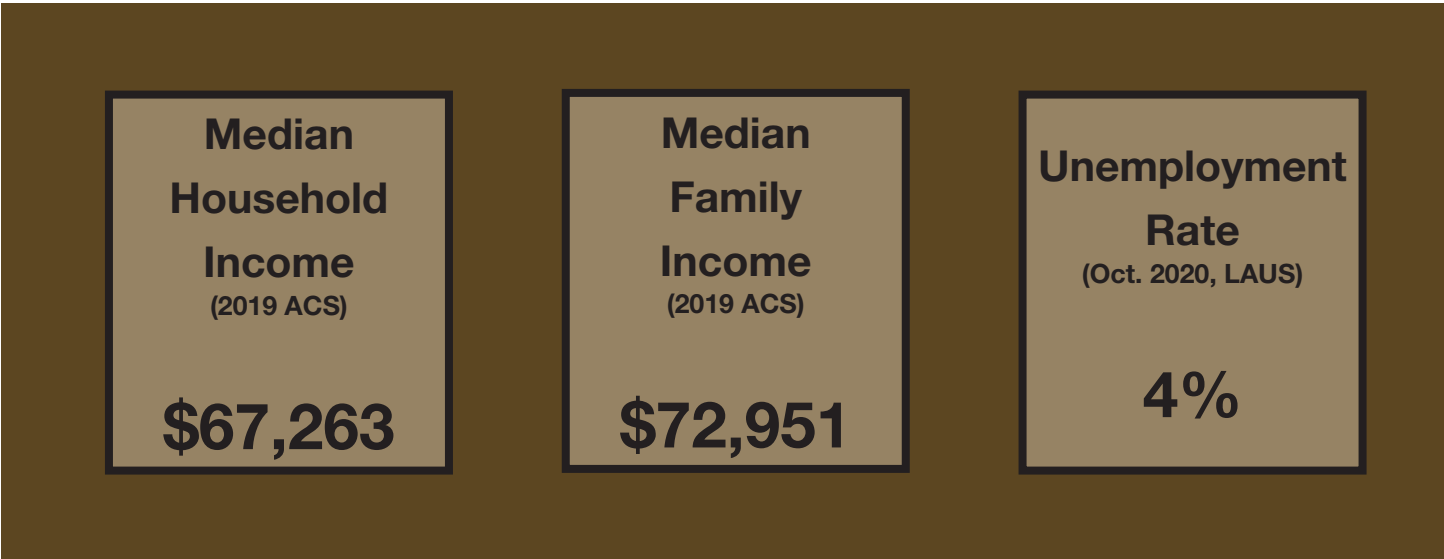
**The City of Irving's population rank is:**  
2nd largest in the county  
11th largest in the state  
87th largest in the nation



# Income and Employment

Fortune 500 and Fortune 1000 companies have their global headquarters located in Irving. Irving is home for more than 8,500 companies – large, small and mid-size. With international companies currently operating throughout the city, Irving is striving to be the leading international business center in America.

Irving continues to shine as a vibrant urban community that is a destination for investment and high-wage jobs.

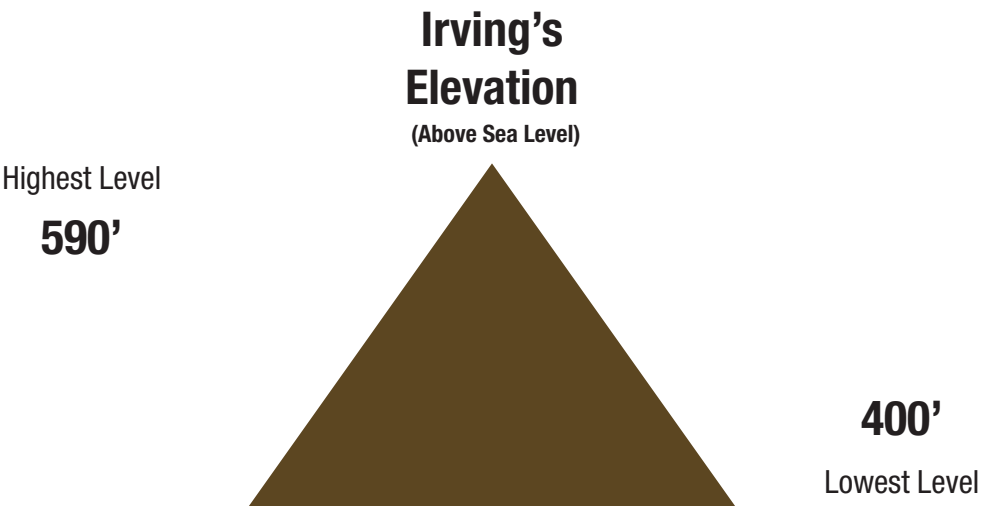


Among the top industries in the city are professional, business and financial services; information technology; trade; transportation and utilities; and education and health services.



# Physical Characteristics

Irving's 67.9 square miles of land area includes exceptional golf courses and more than 80 parks on 1,873 park acres — all begging outdoor activity. Irving is the first city to share a major connection along the Trinity Trail System, a regional network that will ultimately span 250 miles and connect 16 counties across North Texas.





In Irving, the summers are hot and muggy; the winters are cold and windy. Summer runs from June through September, with July and August being the hottest. In Irving, one could experience all four seasons in one day.

## Rainfall

Historical Average - 33.41 inches  
Rainfall in 2021 – 33.59 inches  
Driest Year on Record – 1921 with 17.91 inches  
Wettest Year on Record – 2015 with 62.61 inches

## Temperature

Average January 2021	47.5°F
Highest January Average (1923)	55.5°F
Average July 2021	84.7°F
Highest July Average (1980)	92.0°F

## Historical Months

Record High:  
June 26 and 27, 1980 – 113°F

Record Low:  
Feb. 12, 1899 – -8°F

2nd Record Low:  
Jan. 31, 1949 and  
Feb. 16, 2021 – both with -2°F

Irving offers a variety of housing options from single-family to multifamily — from houses to mobile homes to apartments and townhomes.

## Housing Type (2021 NCTCOG)

54.1% Multifamily  
44.4% Single Family  
1.5% Other

Total Units (2021 NCTCOG) – 101,643

## Existing Home Data and Sales

Average Home Sale Price (FY20-21 TAMU)	\$375,678
Average Home Appraisal (2021 DCAD)	\$280,904
Median Home Appraisal (2021 DCAD)	\$224,060
Median Year Built (2021 DCAD)	1973



## Land Use

By Acreage (2021)

Single-Family Detached	8,157.4
Single-Family Attached	178.0
Duplex	129.4
Multifamily	2,472.5
Mobile Home	199.5
Office	1,902.0
Retail	1,287.5
Commercial	4,519.4
Institutional, Public, Semi Public	2,696.0
Airport	6,054.7
Parks, Recreation and Other Open Space	3,422.9
Industrial	524.3
Vacant (undeveloped, including floodplain)	3,953.7

## Households by Type (2019 ACS)

Married with Children – 21,768

Married with No Children – 18,187

Single Parent with Children – 7,867

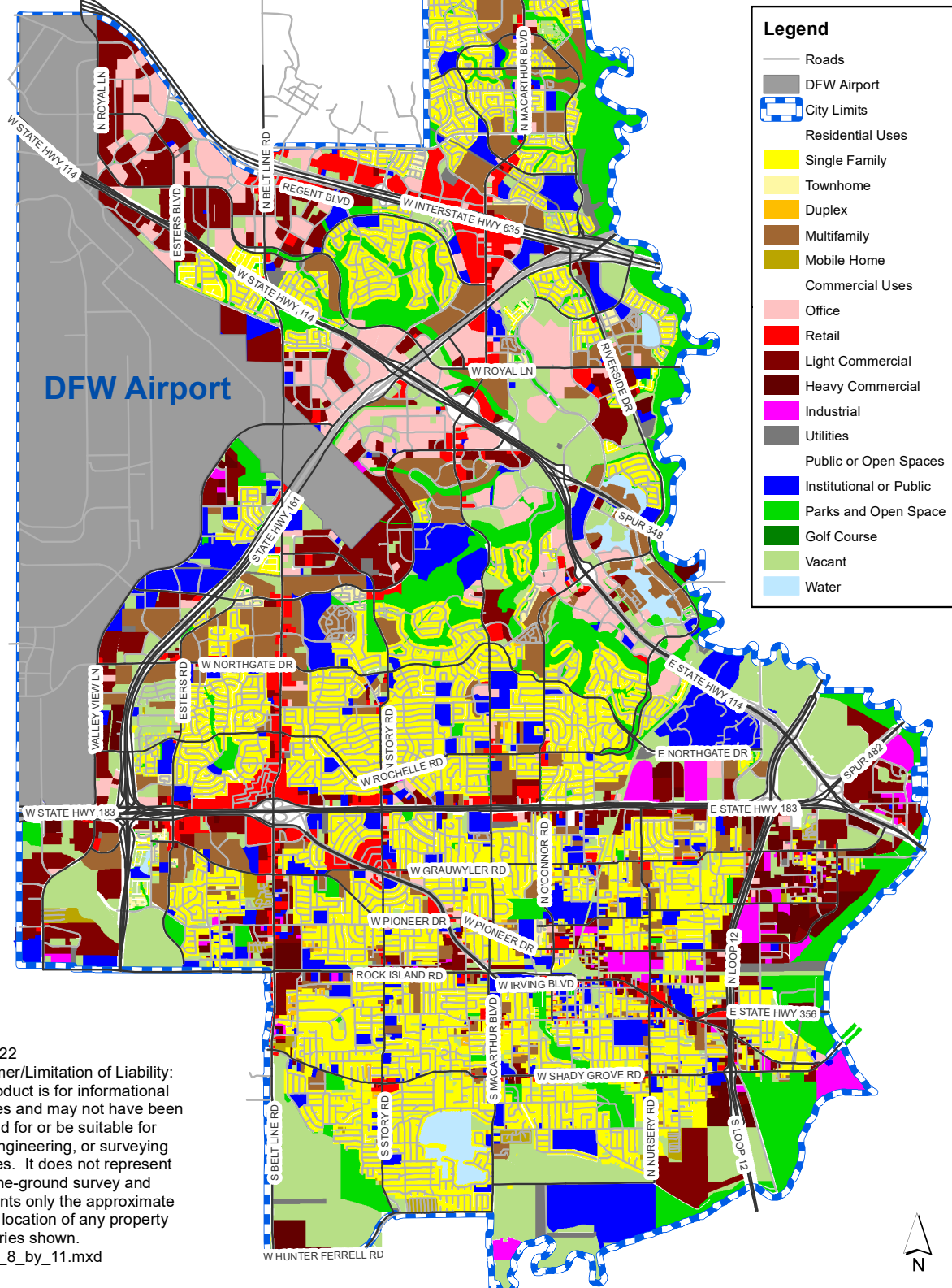
Other Family – 9,056

Person Living Alone – 21,139

Other Nonfamily Households – 5,328



# Current Land Use 2021



1/18/2022

**Disclaimer/Limitation of Liability:**  
 This product is for informational purposes and may not have been prepared for or be suitable for legal, engineering, or surveying purposes. It does not represent an on-the-ground survey and represents only the approximate relative location of any property boundaries shown.  
 Vertical\_8\_by\_11.mxd

Irving residents are served by Irving, Carrollton-Farmers Branch and Coppell independent school districts, as well as a variety of private and parochial schools and academies. Irving also boasts three fully accredited institutions of higher learning: DeVry Institute of Technology, North Lake College and the University of Dallas.

Education Level Attained (2019 ACS)	
Less than 9th Grade	10.2%
9th to 12 Grade (No Diploma)	8.2%
High School Graduate or GED	21.4%
Some College (No Degree)	14.2%
Associate's Degree	5.3%
Bachelor's Degree	25.6%
Graduate or Professional Degree	15.1%



Irving Independent School District		Coppell Independent School District	
Total Students (2020)	33,453	Total Students (2020)	13,181
SAT Average Score (2018-19)	916	SAT Average Score (2018-19)	1,307
ACT Average Score (2018-19)	16.8	ACT Average Score (2018-19)	25.1
Total Teachers (FTE)	2,146	Total Teachers (FTE)	856

Carrollton/Farmers Branch Independent School District	
Total Students (2020)	25,548
SAT Average Score (2018-19)	1,003
ACT Average Score (2018-19)	21.0
Total Teachers (FTE)	1,695

The City of Irving is a full-service municipality that operates under a council-manager form of government consisting of the mayor and eight city council members who serve three-year terms.

The mayor and two council members are elected at-large, and the remaining council members represent single-member districts. The mayor and city council appoint a professional city manager to manage the day-to-day operations of the organization.

## Tax Information

### Sales Tax Rate – 8.25%

State of Texas	6.25%
DART	1.00%
City of Irving	1.00%

### Property Tax Rates (Per \$100 Assessed Valuation-Estimated 2021 Tax Rates)

City of Irving	\$0.5941
Dallas County	\$0.2279
Dallas County Community College District	\$0.1235
Parkland Hospital District	\$0.2550
School Equalization	\$0.01

### School District Tax Rates

Irving Independent School District	\$1.2007
Carrollton/Farmers Branch Independent School District	\$1.20125
Coppell Independent School District	\$1.2920

### Irving's Total Taxable Value (DCAD Certified Tax Roll 2021)

Commercial Taxable Value	\$14,430,393,594
Business Personal Property Taxable Value	\$7,479,815,809
Residential Taxable Value	\$9,461,285,929



# Citywide Historical Information

14

Irving, founded in 1903 by J.O. Schulze and Otis Brown, was officially incorporated April 14, 1914.

## 30-Year Trends

Race and Ethnicity				
	1990 Census	2000 Census	2010 Census	2020 Census
White, NH	110,681	92,483	66,559	53,982
Black, NH	11,498	18,905	25,550	31,714
Asian, NH	6,902	15,500	30,161	57,301
Other, NH	1,127	4,791	5,053	8,218
Hispanic, Any Race	24,829	59,932	88,967	105,469
<b>Total Persons</b>	<b>155,037</b>	<b>191,611</b>	<b>216,290</b>	<b>256,684</b>

Households by Type				
	1990 Census	2000 Census	2010 Census	2019 ACS
Married with Children	15,167	17,313	18,454	21,768
Married with No Children	15,778	17,171	17,136	18,187
Single Parent with Children	4,753	7,399	9,094	7,867
Other Family	3,520	4,840	6,910	9,056
Persons Living Alone	18,811	23,884	24,815	21,139
Other, Nonfamily Households	5,161	5,866	6,129	5,328
<b>Total Households</b>	<b>63,190</b>	<b>76,473</b>	<b>82,538</b>	<b>83,345</b>



The City of Irving is the 11th largest city in the state and 87th largest in the nation.

Internal population forecasts being generated through the Imagine Irving comprehensive planning process forecasts a future population of approximately 302,000 people by 2040.

# City Council District Data

15

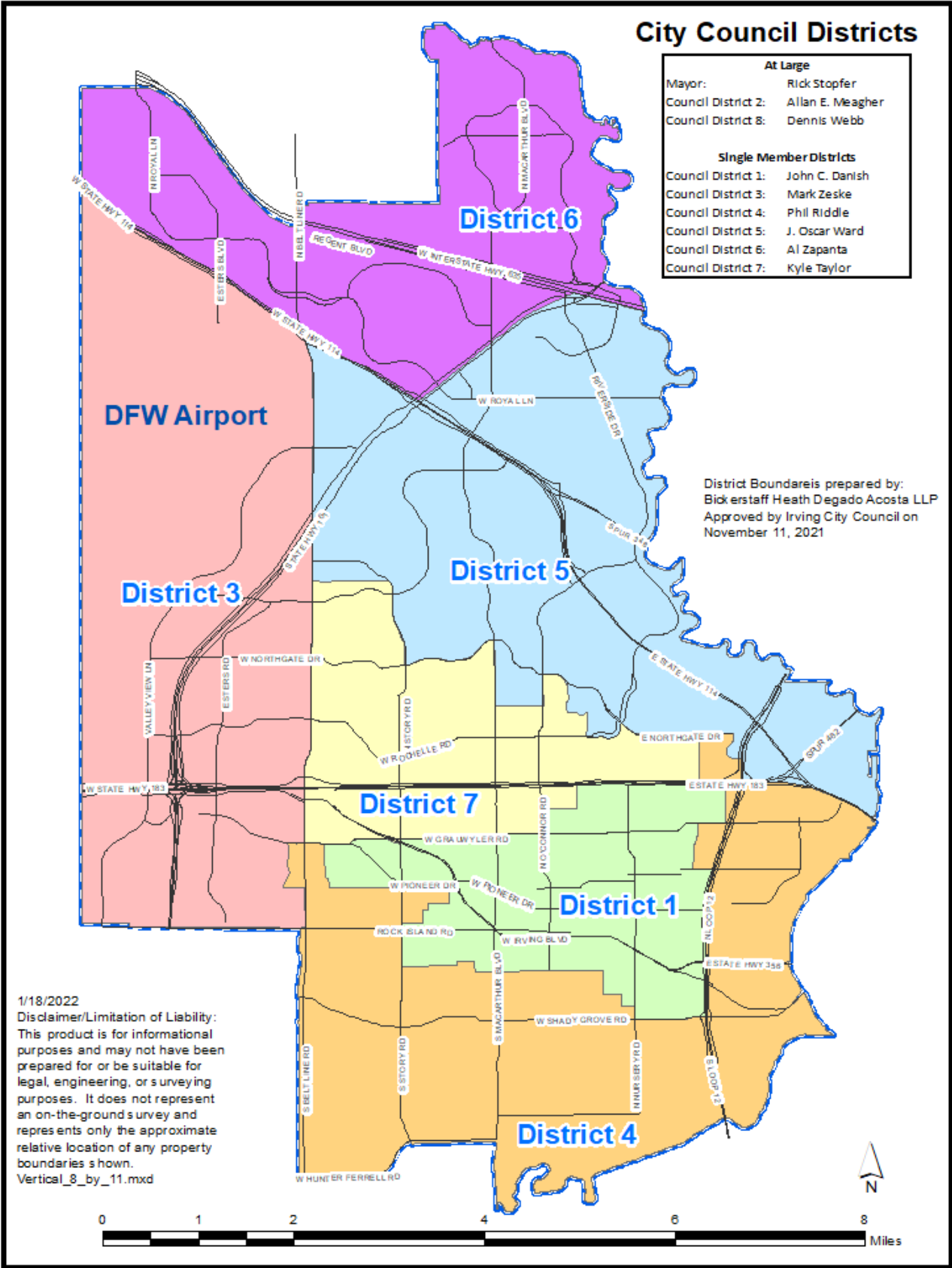
Following the dramatic growth and geographic shift in population documented by the 2020 Census, the Irving City Council approved new Council District boundaries on Nov. 11, 2021. Third party consultants were used to analyze the data to design these new districts and ensure that each single-member district served roughly the same number of Irving residents. The new district boundaries reduced the area of District 5, which has seen explosive population growth, and adjusted the boundaries of districts 1, 4 and 7, in order to restore equilibrium between them.

Population by Council District – 2020 Census					
	White, Non-Hispanic	Black, Non-Hispanic	Asian, Non-Hispanic	All Other, Non-Hispanic	Hispanic
District 1	5,690	1,564	940	733	31,793
District 3	6,842	11,220	9,839	1,616	14,745
District 4	10,022	2,395	2,814	1,179	24,721
District 5	13,240	5,890	16,285	1,711	6,599
District 6	8,815	4,862	24,418	1,508	4,030
District 7	9,373	5,783	3,005	1,471	23,581
<b>Citywide Totals</b>	<b>53,982</b>	<b>31,714</b>	<b>57,301</b>	<b>8,218</b>	<b>105,469</b>

Current Housing by Council District – 2021 Estimates			
	Single-Family Units	Multifamily Units	Other Units
District 1	6,738	6,829	109
District 3	5,047	13,186	357
District 4	10,160	2,493	928
District 5	4,730	19,541	0
District 6	7,333	10,943	24
District 7	7,665	7,888	0
<b>Citywide Totals</b>	<b>41,673</b>	<b>60,880</b>	<b>1,418</b>

Current Land Use Acreage Residential by Council District – 2021 Estimates					
	Single-Family Detached	Single-Family Attached	Duplex	Multifamily	Mobile Home
District 1	1,443.4	29.2	57.1	267.2	8.9
District 3	817.3	42.8	8	573.4	59.3
District 4	2,315.8	3.2	53	128.8	131.3
District 5	891	36.9	1.2	642.3	0
District 6	1,126.4	35.5	2.1	498.5	0
District 7	1,563.4	30.4	8.1	362.3	0
<b>Citywide Totals</b>	<b>8,157.4</b>	<b>178</b>	<b>129.4</b>	<b>2,472.5</b>	<b>199.5</b>

Current Land Use Acreage Commercial by Council District – 2021 Estimates									
	Office	Retail	Commercial	Institutional	Airport	Parks/Open	Industrial	Utilities	Vacant/Undeveloped
District 1	55.8	136.5	323.1	420.3	0	84.8	84	7.8	155.3
District 3	80.8	253.5	878.5	315.5	5,141.2	198.5	30.1	25.6	751.8
District 4	38.6	75.1	1,041.9	588	0	964.9	230.6	123.7	1,496.2
District 5	1,017.6	186.5	868.6	737.7	344.5	1,308.2	68	66.4	1,217.2
District 6	628.9	384.5	1,236.2	262.5	569	813.8	0	86.4	255.3
District 7	80.3	251.3	171.1	362	0	70.8	111.6	26.6	77.9
<b>Citywide Totals</b>	<b>1,902</b>	<b>1,287.5</b>	<b>4,519.4</b>	<b>2,686</b>	<b>6,054.7</b>	<b>3,441</b>	<b>524.3</b>	<b>336.5</b>	<b>3,953.7</b>



Special taxing districts limited to specific areas within the city such as flood control and reclamation districts not included.

School districts do not cover entire city, and only one can be applied to total tax rate.

Tax information listed is for informative purposes only and is subject to change. Verify information with appropriate entity before calculating taxes.

Census Bureau: 2020 Census, 2019 One-year American Community Survey, 2019 Population Estimates Program

Other Data Sources: North Central Texas Council of Governments, Dallas County Appraisal District, National Weather Service Weather Forecast Office, Wayne State University, Irving ISD, Carrollton/Farmers Branch ISD, Coppell ISD, U.S. Geological Survey, Greater Irving-Las Colinas Chamber of Commerce, Texas Education Administration, Texas Real Estate Data Center, Texas A&M University, Texas Education Agency Academic Excellence Indicator System, Texas Workforce Commission TRACER



**City of Irving**

Planning and Community Development Department  
825 W. Irving Blvd.  
Irving, Texas 75060  
(972) 721-8069