



## Master Production Scheduling

The Kinaxis® RapidResponse® Master Production Scheduling application helps master schedulers continuously balance demand, supply and capacity so you can meet critical operational goals.

Using the Master Production Scheduling application, you'll be able to quickly and easily manage supply to meet expected demand, while still respecting material and capacity constraints and hitting those finished goods inventory management targets. Skillfully align supply to stated demand on a weekly, daily and near real-time basis.

### Business outcomes

- ▶ Eliminate the need to review every single part by highlighting exceptions between current and previous plans (like misalignments between the master production schedule (MPS) and materials or capacity schedules)
- ▶ Quickly discover who's responsible for any gating items and resources causing exceptions, and easily collaborate with the right people to determine the best course of action
- ▶ Simulate and understand tradeoffs between various schedule options at both the functional and strategic level

“RapidResponse helps our operations team easily and accurately identify buildable orders. We often use it to identify short-term shortages, project E&O, fulfill complex reporting needs and meet unique planning requirements that would require tremendous effort in a traditional ERP system.

**IT Professional**

Large Enterprise Electronics Company

# Application process components

The out-of-the box Master Production Scheduling application supports these process steps:

## 1 Start MPS process

- Create simulation scenario to test changes to the plan and assess their impact

## 2 Review and adjust planning parameters

- Collaborate with other stakeholders to simulate changes to input planning parameters that affect the generation of the MPS
- Analyze impact of the changes

## 3 Align and firm MPS

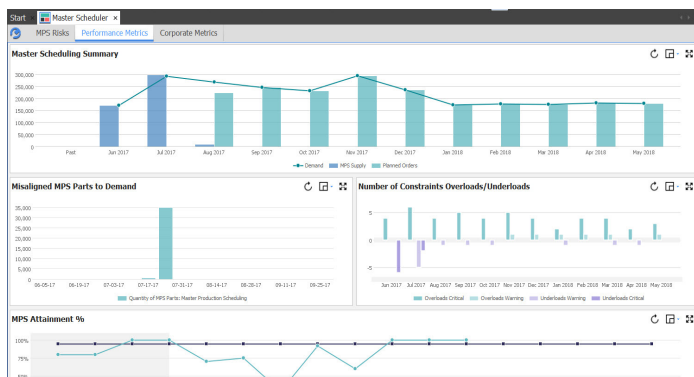
- Disaggregate the aggregate supply plan and identify misalignments with the MPS
- Review and collaborate to resolve misalignments that arise as a result of MPS changes
- Adjust existing firm buckets and firm remaining planned buckets of the MPS to drive communication to planning and procurement roles

## 4 Resolve MPS issues

- Understand material and capacity related risks that impact the MPS and collaborate with others to resolve issues
- Work with customer service to simulate and evaluate options for mitigating risks to service levels that are impacted by the MPS

## 5 Finalize and publish MPS

- Provide feedback to supply planner involved in S&OP about any significant risks associated with the achievement of the overall supply plan
- Drive the desired planning parameter and schedule changes into execution systems



MPS dashboard

The Late supply analysis table provides a detailed view of supply chain data, including order status, dates, and quantities. The table is organized into several sections:

- Order Summary:** A table with columns: Order Number, Line, Campaign, Part, Site, Description, Responsible, Type, Status, Priority, Late Lines, Due Date, Available Date, Days, and Quantity.
- Component Time:** A table with columns: Part, Site, Description, Responsible, Number, Line, Campaign, Supplier, Due Date, Available Date, Quantity, Days, and Gating Constraint.
- Late Supply Order:** A table with columns: Part, Site, Description, Responsible, Number, Line, Campaign, Supplier, Due Date, Available Date, Quantity, Days, and Gating Constraint.

Late supply analysis

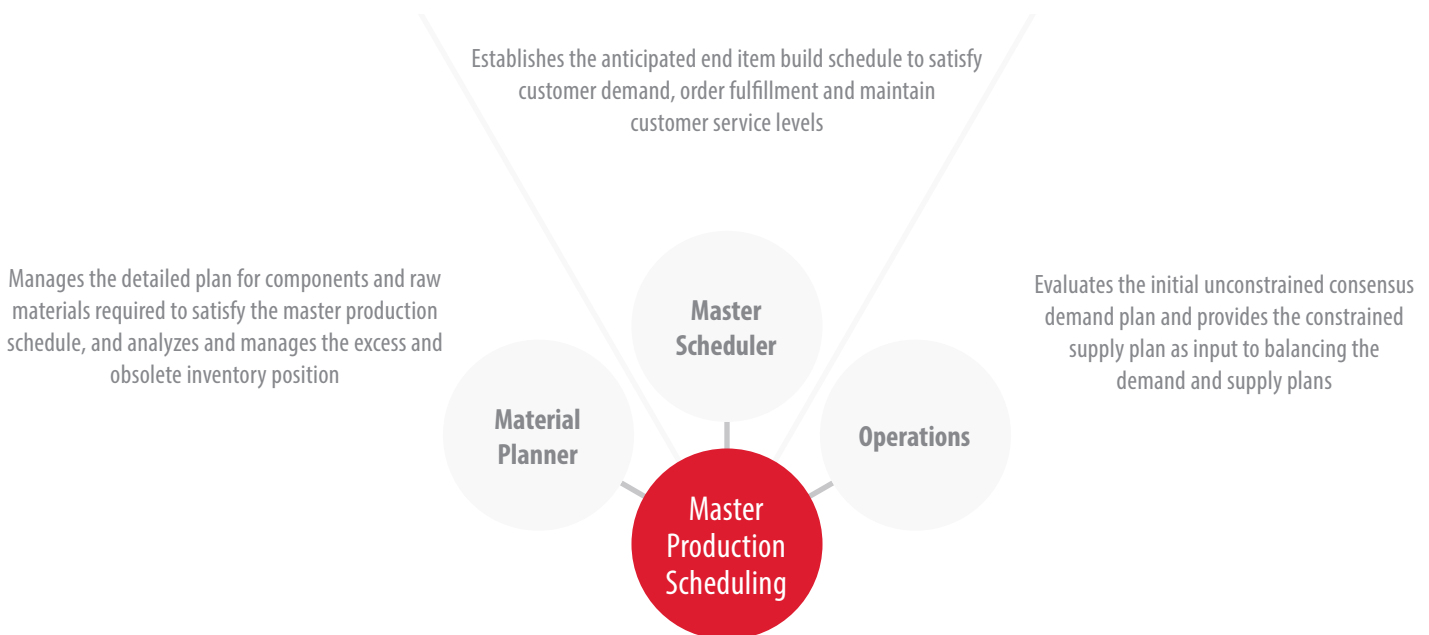
## Managing performance

Standard measures include revenue, margin, inventory value, on-time delivery and constraint utilization as well as metrics associated specifically with capacity planning. This allows for focused analysis of the performance measures most applicable to the function at hand. Measures presented in the Capacity Planning (Constraints) dashboard include:

- ▶ **Consensus Exceptions:** Quantity of exceptions in the current master production schedule.
- ▶ **Late Revenue:** Revenue expected to be late due to late parts.
- ▶ **Constraints:** Parts that will be late due to insufficient load available at a constraint.
- ▶ **Component Shortages:** MPS items that will be late due to late components .
- ▶ **Misaligned Parts to Demand:** Parts that will be available later than the required date.
- ▶ **Constraint Overloads/Underloads:** Constraints that are either overloaded or underloaded.

## Cross-functional collaboration

In the Master Production Scheduling application, collaboration occurs across these functional roles:



## Kinaxis RapidResponse allows companies to concurrently plan, monitor and respond on one platform, across business functions.

With a single data model and analytics engine, RapidResponse offers an array of supply chain applications all easily accessible through a common user interface. Using our single product, instead of individual disparate software solutions, our customers gain end-to-end supply visibility and the agility to respond quickly to changing conditions. The result is significant operating and cost efficiencies.

Deploy RapidResponse applications individually or together. Designed to be highly configurable, you can easily adapt our applications to meet your company's unique business needs without the heavy burden of ongoing custom coding.

## What's next on your supply chain journey?

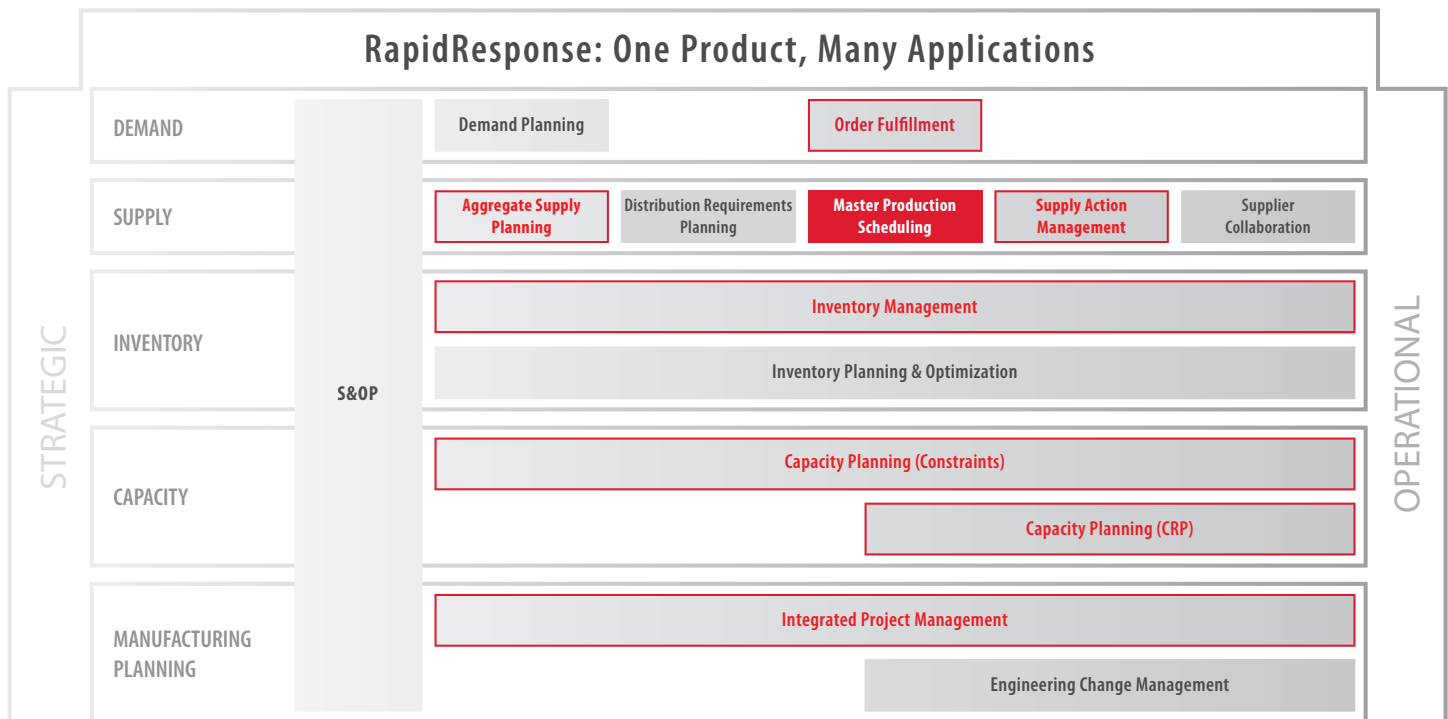
Choose the path that's right for your organization. With all our applications running on the single RapidResponse platform, you have the flexibility to deploy at your own pace. We'll help you mature your planning processes, wherever you happen to be in your supply chain journey. Achieve added benefits by using the Master Production Scheduling application alongside one or more related applications to ensure synchronization across interrelated planning processes.

Organizations that use the Master Production Scheduling application can achieve even more value by using it with the Aggregate Supply Planning, Capacity Planning (Constraints), Capacity Planning (CRP), Inventory Management, Order Fulfillment, Supply Action Management or Integrated Project Management applications.

“RapidResponse has reduced the cycle time for producing a supply plan for operations by half, while allowing for greater supply/operational plan accuracy.

IT Systems Analyst

Large Enterprise Telecommunications Company



## Revolutionize your planning with Kinaxis RapidResponse

Offering the industry's only concurrent planning solution, Kinaxis is helping organizations around the world revolutionize their supply chain planning. Kinaxis RapidResponse, our cloud-based supply chain management software, connects your data, processes and people into a single harmonious environment. With a consolidated view of the entire supply chain, you can plan expected performance, monitor progress and respond to disconnects when reality hits. RapidResponse lets you know sooner and act faster, leading to reduced decision latency, and improved operational and financial performance. We can prove it. From implementation to expansion, we're here to help our customers with every step of their supply chain journey.



Kinaxis World Headquarters  
700 Silver Seven Road  
Ottawa, Ontario K2V 1C3  
Canada  
[www.kinaxis.com](http://www.kinaxis.com)

tel: +1 613.592.5780  
toll free: +1 866.236.3249  
support: +1 866.463.7877  
fax: +1 613.592.0584  
email: [info@kinaxis.com](mailto:info@kinaxis.com)

This brochure is accurate as of the date published and may be updated by Kinaxis from time to time at its discretion.

Copyright © 2017 Kinaxis Inc. All rights reserved. Kinaxis, the Kinaxis logo and RapidResponse are registered trademarks of Kinaxis Inc. All other brands and product names are trademarks or registered trademarks of their respective holders, and use of them does not imply any affiliation with or endorsement by them. 07.17