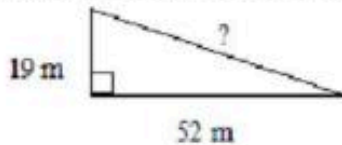


Pythagorean Theorem Problems Worksheet

Multiple Choice

Identify the choice that best completes the statement or answers the question.

1. What is the measure of the missing length?

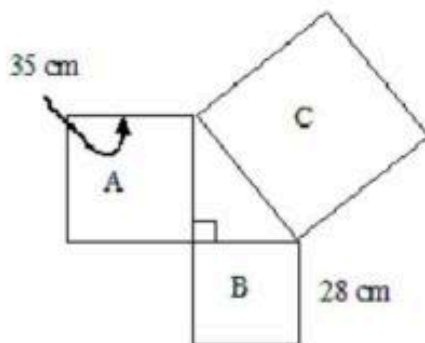


- a. 55 m
b. 57 m
c. 63 m
d. 71 m

2. Ms. Lange drove about 150 km east from La Sarre, to Senneterre, Quebec. She drove about another 75 km north to Lebel-sur-Quévillon. What is the approximate air distance from La Sarre to Lebel-sur-Quévillon, Québec?

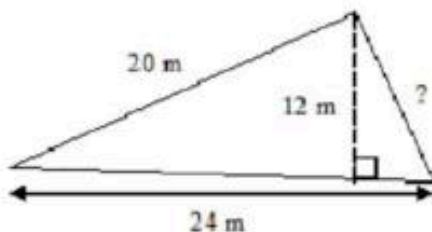
- a. 160 km
b. 168 km
c. 175 km
d. 225 km

3. What is the area of Square C?



- a. 90 cm^2
b. 1960 cm^2
c. 2009 cm^2
d. 3969 cm^2

4. What is the measure of the missing length?



- a. 13 m
b. 14 m
c. 15 m
d. 16 m

5. What is the measure of the diagonal of the square to the nearest tenth of a millimetre?