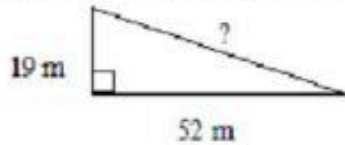


## Worksheet: Pythagorean Theorem Problems

### Multiple Choice

Identify the choice that best completes the statement or answers the question.

- \_\_\_ 1. What is the measure of the missing length?

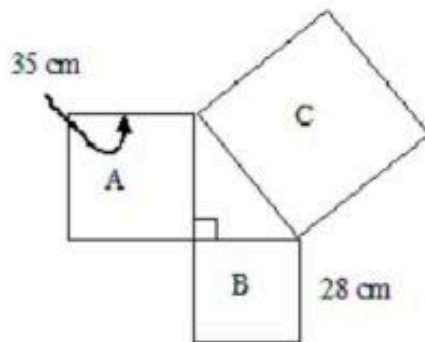


- a. 55 m  
b. 57 m  
c. 63 m  
d. 71 m

- \_\_\_ 2. Ms. Lange drove about 150 km east from La Sarre, to Senneterre, Quebec. She drove about another 75 km north to Lebel-sur-Quévillon. What is the approximate air distance from La Sarre to Lebel-sur-Quévillon, Québec?

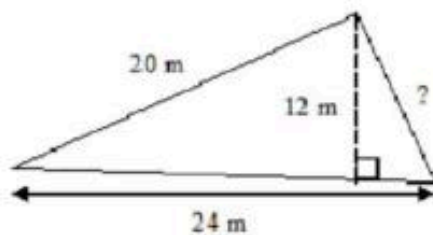
- a. 160 km  
b. 168 km  
c. 175 km  
d. 225 km

- \_\_\_ 3. What is the area of Square C?



- a.  $90 \text{ cm}^2$   
b.  $1960 \text{ cm}^2$   
c.  $2009 \text{ cm}^2$   
d.  $3969 \text{ cm}^2$

- \_\_\_ 4. What is the measure of the missing length?



- a. 13 m  
b. 14 m  
c. 15 m  
d. 16 m

- \_\_\_ 5. What is the measure of the diagonal of the square to the nearest tenth of a millimetre?